

Pennsylvania's Motivational Boot Camp Program: The Impact of a 30-day Aftercare Provision on Offender Recidivism

2007 Report to the Legislature



THE PENNSYLVANIA COMMISSION ON SENTENCING

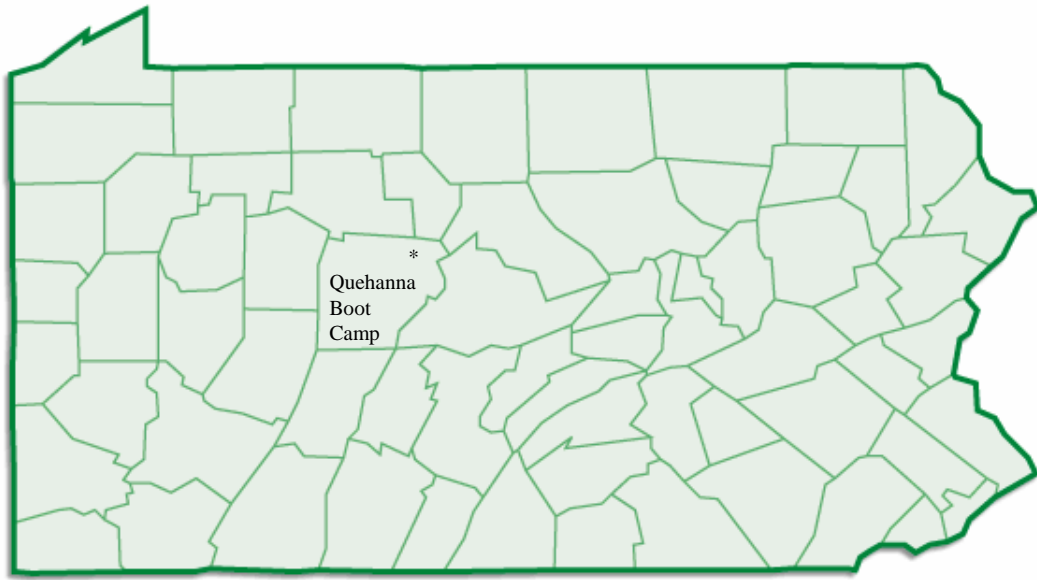
Representative Frank Dermody
Chair

District Attorney Merritt E. 'Ted' McKnight
Vice-Chair

Mark H. Bergstrom
Executive Director

Pennsylvania's Motivational Boot Camp Program: The Impact of a 30-day Aftercare Provision on Offender Recidivism

2007 Report to the Legislature



by

Cynthia A. Kempinen, Ph.D.
Deputy Director
Pennsylvania Commission on Sentencing

Leigh Tinik
Research Associate
Pennsylvania Commission on Sentencing

January 2007

Acknowledgments

We appreciate the tremendous cooperation and support from the Department of Corrections, the Pennsylvania Board of Probation and Parole, and the Pennsylvania State Police, and would like to gratefully acknowledge the contributions of their staff. *Ms. Mary Natoli*, Program Manager at the Boot Camp, oversees the monthly distribution of the Offender Surveys given at the Boot Camp admission and graduation phases, with the assistance of *Sonya Shadeck*, Commander's Secretary. *John Tuttle*, Director of Probation and Parole Services, and *Cindy Kable*, Administrative Assistant, with the Pennsylvania Board of Probation and Parole, distribute and track the statewide distribution of the Offender Survey at the parole phase. We would also like to thank the numerous parole officers across the state who ensure that the surveys are returned to the Commission. *Bob Flaherty*, Security Data Manager with the Department of Corrections, and *Gregory Rowles*, Records Specialist 2 at the Boot Camp, provided us with Boot Camp admissions information and data used for the recidivism study. *Scott Sanson*, Applications Developer 2 with the Pennsylvania State Police, provided us with the criminal history data used for the recidivism study. *Superintendent George Patrick*, Commander of the Quehanna Boot Camp, *Mary Natoli*, and *Dr. Michael Antonio*, Research and Evaluation Analyst at the Department of Corrections, reviewed the report and, as always, offered useful comments and suggestions. We are also grateful to *Professor Barry Ruback* of The Pennsylvania State University, for his valuable statistical advice on the recidivism study, and *Professor Megan C. Kurlychek* of The University of South Carolina, who previously worked on this project and contributed significantly toward the development of the research design used in the current study. Lastly, we want to acknowledge the contributions of The Sentencing Commission's undergraduate research assistants, *Greg Pitchford* and *Bruce Schmerling*, who entered the Boot Camp Offender Surveys into our database. The map used in our report was provided via www.worldatlas.com.

Table of Contents

<i>Executive Summary</i>	1
<i>Introduction and Overview</i>	3
Legislative Background of Pennsylvania’s Boot Camp	3
Statutory Eligibility Criteria for Boot Camp	3
Procedure for Selection of Boot Camp Participants	4
Description of Pennsylvania’s Boot Camp Program	5
Aftercare for Boot Camp Graduates	7
Legislative Reports on the Motivational Boot Camp Program.....	7
<i>Who Goes to Boot Camp?</i>	9
Characteristics of Offenders Admitted to Boot Camp during 2002	9
<i>Boot Camp Offender Survey</i>	12
Boot Camp Offender Characteristics: Self-Report Survey	12
Offender Expectations of Boot Camp.....	15
Attitudinal Changes among Boot Camp Graduates	17
Self-Reported Behavioral Changes among Boot Camp Graduates	23
Offenders’ Comments on Boot Camp.....	27
<i>The Impact of Aftercare on the Recidivism of Boot Camp Graduates</i>	28
Previous Study: Impact of 90-day Aftercare Program	28
Current Study: Impact of 30-day Aftercare Program	29
Findings: What factors predict recidivism.....	29
<i>Summary and Conclusion</i>	39

Appendices

<i>Appendix A: Characteristics of Boot Camp Offenders by Year</i>	<i>41</i>
<i>Appendix B: Responses from Self-Report Survey: Admission Stage</i>	<i>47</i>
<i>Appendix C: Responses from Self-Report Survey: Parole Stage</i>	<i>59</i>
<i>Appendix D: Responses from Boot Camp Evaluation Survey for Admission, Graduation, and Parole Stages</i>	<i>73</i>
<i>Appendix E: Life Tables Used for Recidivism Study</i>	<i>87</i>

***Pennsylvania's Motivational Boot Camp Program:
The Impact of a 30-day Aftercare Provision on Offender Recidivism
2007 Legislative Report***

Executive Summary

Act 215 of 1990, which created Pennsylvania's Motivational Boot Camp Program, mandated the Pennsylvania Commission on Sentencing to report annually to the House and Senate Judiciary Committees on the progress of the program. Act 112 of 2004, which established the State Intermediate Punishment Program, changed the reporting requirement so that in odd numbered years, the Sentencing Commission submits a Boot Camp Report to the Legislature, and in even numbered years, the Sentencing Commission submits a State Intermediate Punishment Report to the Legislature. This is the Commission's first Boot Camp Report under the new reporting requirement. The *2007 Legislative Report* consists of three parts: 1) Who Goes to Boot Camp?, 2) Boot Camp Offender Survey [which includes a Self-Report Survey and Boot Camp Expectations Survey], and 3) The Impact of Aftercare on the Recidivism of Boot Camp Graduates. The major findings are as follows:

Part I: Who Goes to Boot Camp?

◆ Since the opening of the Boot Camp in 1992 through 2005, there have been 5177 offenders admitted to the Boot Camp Program. The typical offender entering Boot Camp is young, non-white, male, convicted of a drug offense, and from an urban area, predominantly Philadelphia and Allegheny Counties.

Part II: Boot Camp Offender Survey

A. Profile of the Boot Camp Offender

- ◆ Most offenders report having a high school education and having been employed. While most identified their jobs as their primary source of income, about one-third indicated that they obtained their income primarily through illegal means.
- ◆ Most offenders report being single, having children, and living with their children prior to going to Boot Camp. Offenders indicated that, as children, they were more likely to live with two parents than with one parent.
- ◆ Most offenders reported having family members and friends who had previously been incarcerated.
- ◆ The vast majority of offenders had committed prior offenses, consisting primarily of drug dealing, drug use, and DUI. A sizeable number of offenders had been arrested as a juvenile, though the average age at first arrest was 18 years.
- ◆ Most offenders had used drugs the day of their offense. The average age of onset is 15 years of age, and marijuana and cocaine are the predominant drugs of choice.

B. Offender Expectations

- ◆ The vast majority of offenders were proud that they were accepted into Boot Camp and felt that because of what they learned in the program, they would avoid ‘getting into trouble again.’
- ◆ Offenders had high expectations of the Boot Camp and anticipated that they would learn self-discipline, benefit from the substance abuse programs, and be able to secure employment upon graduation.

C. Attitudinal and Behavioral Changes Among Boot Camp Graduates

- ◆ Upon graduating from Boot Camp, offenders indicated that were less impulsive, had better decision-making skills, and had fewer problems with drugs. Additionally, all of these changes endured after offenders were on parole for six months.
- ◆ After Boot Camp, offenders were more likely to be employed full-time and less likely to use drugs or alcohol.
- ◆ Most of the offenders made new friends, did not ‘hang-out’ with their old friends, and associated with fewer friends who had been in trouble with ‘the law.’

Part III: Recidivism Study: Factors Related to Recidivism

- ◆ Overall, during a two year tracking period, about 19% of the Boot Camp graduates in the recidivism study were recommitted for a technical violation and 31% were arrested for a new crime.
- ◆ In comparing offenders who received a minimum of 90 days of aftercare, a minimum of 30 days of aftercare, and no mandatory aftercare, there was no significant difference in their recidivism. While offenders who received 90 days of aftercare or 30 days of aftercare had slightly higher rates of technical violations than offenders with no aftercare, and slightly lower rates of arrests, this finding was not significant.
- ◆ The best predictors of both technical violations and re-arrest were prior arrests and age at first arrest. Offenders who were younger when first arrested and had a greater number of prior arrests were significantly more likely to recidivate.
- ◆ Additionally, the best predictors of technical violations were offense type and the offender’s score on the Help with Drugs Scale. Offenders convicted of a non-drug crime and those who indicate a stronger need for help with their drug problem are significantly more likely to have technical violations. Those factors that predicted new arrests were race, employment status, and scores on the Temper Scale and Task Scale. Offenders who were non-white, not employed or going to school, have a greater problem controlling their temper, and don’t like complicated tasks are significantly more likely to be arrested for a new crime.

Introduction and Overview

Legislative Background of Pennsylvania's Boot Camp Program

In 1990, the legislature passed Act 215, which established a state Motivational Boot Camp Program. The Boot Camp, which is located in Quehanna, Clearfield County, opened in June 1992. It serves as an alternative to traditional state prison and allows eligible inmates to serve a reduced six-month sentence if they successfully complete the program. The impetus behind the legislation was the recognition of the severe overcrowding situation in the state correctional system. Further, there was legislative interest in offering an alternative to prison that would provide a more intense rehabilitative setting conducive to achieving the goal of crime reduction. Of particular concern was that the Boot Camp Program provide substance abuse treatment as most offenders have been found to have drug and/or alcohol problems. In light of these legislative concerns, the enabling legislation outlined the following objectives for the establishment of the Boot Camp Program:

- (1) To protect the health and safety of the Commonwealth by providing a program which will reduce recidivism and promote characteristics of good citizenship among eligible inmates.
- (2) To divert inmates who ordinarily would be sentenced to traditional forms of confinement under the custody of the department to motivational Boot Camps.
- (3) To provide discipline and structure to the lives of eligible inmates and to promote these qualities in the post release behavior of eligible inmates.

Statutory Eligibility Criteria for Boot Camp

Act 215 of 1990 required that potential Boot Camp candidates meet certain legislative criteria. Act 86 of 1996 modified the eligibility criteria and became effective for offenders sentenced on or after September 3, 1996. Below are the current statutory criteria for Boot Camp with the 1996 modifications in italics:

- The offender is sentenced to state confinement.
- The offender is serving a term of confinement, the minimum of which is not more than two years and the maximum of which is five years or less; *or the offender is serving a term of confinement, the minimum of which is not more than three years and the inmate is within two years of completing his/her minimum term.*
- The offender has not reached 35 years of age at the time he/she is approved for participation.
- *The offender is not subject to a sentence, the calculation of which included a deadly weapon enhancement under the sentencing guidelines.*
- The offender is not serving a sentence for one or more of the following offenses: Murder, Voluntary Manslaughter, Rape, Involuntary Deviate Sexual Intercourse, Kidnapping, Robbery (F1), *Sexual Assault, Aggravated Indecent Assault, Arson [(a)(1)(i)], Burglary [Home/Person Present], Robbery Of A Motor Vehicle, Drug Trafficking [18 Pa.C.S. 7508 (a)(1)(iii), (a)(2)(iii), (a)(3)(iii), (a)(4)(iii)].*

Act 215 also mandated the Pennsylvania Commission on Sentencing to determine criteria concerning the identification of appropriate candidates for the Boot Camp. As the number of

potential Boot Camp candidates recommended by judges has historically been low, the Commission continues to utilize the minimum sentence allowed by statute to identify potential candidates for judges to consider in their recommendations for Boot Camp.

Procedure for Selection of Boot Camp Participants

Statute requires that the sentencing judge recommend the offender for participation in the Boot Camp Program and that the Department of Corrections make the final determination concerning which offenders will be admitted into the program. The Department of Corrections will notify the sentencing judge if a new inmate appears to be a good candidate for the Boot Camp but has not been designated eligible by the judge. In such cases the judge will often provide a modification of sentence to enable the offender to participate in the program. The two primary reasons that offenders are rejected for the program by the Department of Corrections are outstanding detainers or medical problems. The Boot Camp Program is voluntary and once admitted, an offender can withdraw from the program at which point he/she forfeits the right to immediate parole upon graduation from the program. Rather, the offender returns to the state correctional institution to serve the remaining portion of the minimum sentence prior to being reviewed for release by the Parole Board.

The specific steps involved in the selection of Boot Camp participants are as follows:

1. The Pennsylvania Commission on Sentencing identifies appropriate Boot Camp candidates through the sentencing guidelines.
2. The sentencing judge, using the guidelines, indicates whether the defendant is to be considered for the Boot Camp Program. The offender must meet the legislative criteria that are outlined in the previous section.
3. The judge indicates on the sentencing order and the Guideline Sentence Form the minimum and maximum sentence and whether the offender should be considered for the Boot Camp. By identifying an inmate as eligible for this Boot Camp Program, the judge is agreeing to allow the inmate to be released prior to the expiration of the minimum sentence.
4. Potential Boot Camp candidates go through an expedited classification process at Camp Hill if the offender is a male, and Muncy if the offender is a female.
5. The inmate must apply to the Department of Corrections for admission into the program.
6. The Department of Corrections makes the final determination as to whom will be admitted into the program.
7. Upon successful completion of the six-month program, the inmate is to be released on intensive parole supervision.

Description of Pennsylvania's Boot Camp Program

Pennsylvania's Boot Camp Program was developed to address the legislative objective of reducing recidivism by providing a program that promotes discipline, structure, and characteristics of good citizenship. More specific programmatic features were provided in the legislative definition of Boot Camp: "a program in which eligible inmates participate for a period of six months in a humane program for motivational Boot Camp programs which shall provide for rigorous physical activity, intensive regimentation and discipline, work on public projects, substance abuse treatment services licensed by the Department of Health, ventilation therapy, continuing education, vocational training and prerelease counseling" [Act 215 of 1990].

The Boot Camp is modeled after military Boot Camps and instills discipline and structure through regimented sixteen-hour days consisting of work and program activities with very little free time. Intensive regimentation is provided through Drill Instructors working with the inmate platoons to teach traditional military drills and physical exercise. The Boot Camp reinforces the military training throughout the day by requiring the inmates to demonstrate respect [e.g., use proper titles when addressing staff and Mr. when addressing peers], follow instructions, use military bearing [e.g., stand at attention, show erect and proud posture], maintain neat and clean personal quarters, display a positive attitude, and use their time constructively. A typical day begins at 5:30 with reveille followed by an hour of physical training. The remainder of the day is tightly scheduled with educational and rehabilitative classes and work. Inmates are allowed visits every other weekend and have limited phone privileges on weekends when there are no visitations. Personal radios and televisions are not allowed.

A hallmark of the program is its emphasis on the rehabilitative needs of the offenders, who are provided substance abuse education and treatment. These programs have been found to meet or exceed the substance abuse treatment standards established by the American Correctional Association and the Department of Corrections, and in August 2002, the Boot Camp received Accreditation from the American Correctional Association. The department has also developed a process for assessing each inmate for risk factors involving recidivism and relapse, which allows inmates to be placed in treatment groups and classes based on their assessed needs.

In July 2000, the Boot Camp adopted the cognitive behavioral therapy program, *Thinking for Change*, which provides offenders with a fourteen-week program promoting pro-social skills and values. This program, which was developed by the National Institute of Corrections, has been widely used in correctional settings across the nation. Instructors who teach this program at the Boot Camp are certified by the National Institute of Corrections and have, thus far, reported positive results with offenders.

Inmates also participate in both individual and group counseling sessions with individualized treatment plans developed upon the inmate's arrival to the Boot Camp. The group sessions meet about 2.5 hours per day for seven days a week. During these sessions the inmates learn how to deal with issues related to substance abuse such as: stress and anger management, the effect of drugs on the body, dysfunctional family systems, self-defeating behaviors, building self esteem, developing healthy relationships, relapse prevention, employability, financial budgeting, and getting ready to return to the community. Community meetings, as well as problem-solving and

encounter groups are held, as needed, to provide the opportunity to discuss individual problems and as ventilation therapy. Alcoholics Anonymous, Narcotics Anonymous, self-help, and peer led groups are offered on a weekly basis.

The Boot Camp Program has a mandatory education program for inmates who do not have a high school diploma, while those who have graduated from high school often serve as tutors. Students attend education classes for 30 hours a week and cover six main subject areas: math, grammar, literature, social studies, science and essay writing. Classes engage in pre-GED testing procedures and when students attain a satisfactory level, a GED test date is scheduled. Those who pass the GED are released from education class to work detail while those who do not pass remain in the education program. Approximately 24% of the inmates who have attended Boot Camp test for their GED, and between 2004 and 2006, 69% of those received their GED, which is higher than the 67% passing rate of inmates at other state correctional institutions.

Aside from educational and counseling programs, inmates work on community projects involving other agencies such as the Department of Conservation and Natural Resources, the Pennsylvania Department of Transportation, the Fish and Boat Commission, and the Pennsylvania Game Commission. Also, work is performed in the local boroughs and townships. The inmates' work consists of activities such as: Clearing brush, planting trees, painting buildings, installing playground equipment, and picking up trash and debris from the area parks and highways. Further, the offenders have been involved with the building of splash dams in the local streams to provide an area that is accessible for handicap persons to fish. In addition, the offenders have participated in several stream restoration projects with the Department of Environmental Protection and local chapters of Trout Unlimited. Inmates have been working with the Rails to Trails program as well, helping to convert some of Pennsylvania's old railway into trails for hiking, bicycling and walking. Since the inception of the Community Work Project in 1995 through October 31, 2006, inmates have worked a total of 220,276 hours on these various projects. Inmates not only learn useful skills, but are also instilled with the work ethic through their involvement in these projects. In January 2004 the Boot Camp implemented a fiber-optics vocational training program that allows offenders to earn a certificate in this field, and in 2005 the 198 offenders who participated in the program successfully completed the program.

In July 1999, the Boot Camp opened a newly renovated facility, which can currently accommodate 414 offenders. This facility provides space for a new food-service area, expanded health care, drug and alcohol treatment, education facilities and an indoor physical training area. Generally, there are around 200 offenders participating in the program at any one time, with, on average, about 50 offenders entering the program per month. An additional benefit of the expansion is that it allows for the grouping of inmates into phases [red, green, and gold] that provide for gradual increases in privileges as an incentive and reward for good behavior.¹

¹ For more information on the Boot Camp Program, see "*Quehanna Motivational Boot Camp: Performance Analysis and Evaluation*" by Bret Bucklen, which is available from the Department of Corrections at www.cor.state.pa.us or [717] 731-7149.

Aftercare for Boot Camp Graduates

Statute requires that graduates of the Boot Camp program receive intensive supervision upon graduating from the program. In 2000, the Department of Corrections developed several new initiatives for the aftercare of Boot Camp graduates. These programs, which involve three phases, are available in Philadelphia, Pittsburgh, Harrisburg, and Erie. These three phases allow for a more gradual reintegration back into the community while allowing for the reinforcement of skills learned at the Boot Camp. The Pennsylvania Board of Probation and Parole is responsible for determining which graduates participate in this program. Upon review of the offender's release plan, Parole Board staff decide whether the more structured supervision offered by these aftercare programs is necessary to assist the offender in his/her return to the community.

Mandatory 90-day Aftercare Provision. Research indicates that participation in structured re-entry programs increases an offender's chances for success. In February 2002, a mandatory provision providing for a minimum of 90 days of aftercare was implemented for all offenders graduating from the Boot Camp Program. If deemed necessary by the parole supervision staff, the time period for aftercare could be extended beyond the 90 days. According to the Department of Corrections the mandatory 90-day aftercare provision was intended to provide "a structured re-entry program that includes a detailed prescriptive program for each inmate, a minimum of three months of residency in a structured, supervised residential facility, orientation to the community, involvement of families and the parole agent, cognitive behavior therapy, job readiness skills, job acquisition, and drug and alcohol follow-up service."

Specific aftercare programs were available in Harrisburg [Gaudenzia], Philadelphia [Volunteers of America, ASPIRE], Pittsburgh [Renewal], and Erie [Gaudenzia]. Offenders going through these programs were also required to participate in an outpatient treatment program equal to the amount of time they spent in the residential facility. [i.e., offenders in the three-month residential aftercare program will also participate in a three-month non-residential program]. Offenders not returning to one of these four areas of the state were released to the closest Community Corrections Center or to a private facility for the 30-day minimum residential period, though the outpatient aftercare is unavailable for these offenders.

Mandatory 30-day Aftercare Provision. In December 2002, this aftercare provision was reduced to a minimum of 30 days, as the Department of Corrections found that a Community Corrections Center was offering the same services for less cost. In addition, offenders were being released to centers that were distant from their home community, where they had employment opportunities that were often lost due to a delay in their return. As with the 90-day provision, the amount of time an offender was in aftercare could be extended beyond the minimum of 30 days if parole supervision staff felt it was warranted. The focus of this year's report is the evaluation of the 30-day aftercare program on the recidivism of Boot Camp graduates.

Legislative Reports on the Motivational Boot Camp Program

Act 215 of 1990, which created the Motivational Boot Camp Program, included a mandate to The Pennsylvania Commission on Sentencing and the Department of Corrections to provide annual reports to the House and Senate Judiciary Committees on the progress of the program by February

1 of each year. Act 112 of 2004, which created the new State Intermediate Punishment Program, changed the reporting requirement from every year to every other year. In the alternate years, the Sentencing Commission is responsible for submitting a State Intermediate Punishment Report to the Legislature. This year's report includes the following sections:

- I. **Who Goes to Boot Camp?** This part of the report provides a profile of the type of offender who is admitted into the Boot Camp. The report provides information on the county, gender, race, age, and type of offense for offenders admitted since the inception of the program from in 1992 through 2005, in addition to trends over the last fourteen years.
- II. **Boot Camp Offender Survey.** In October 2000, the Commission began conducting a Boot Camp Offender Survey, with the assistance of the Department of Corrections and the Board of Probation and Parole. Part I is a Self-Report Survey that asks offenders about prior criminal activity, substance abuse, employment history, and family stability. Part II is a Boot Camp Evaluation Survey that measures attitudinal changes along several dimensions that are addressed through the programmatic aspects of the Boot Camp, such as self-control, motivation for change, self-efficacy, and decision-making. The Self-Report Survey is given at admission and parole. The Boot Camp Evaluation Survey is given at admission, graduation, and parole. This year's report presents findings from all three phases.
- III. **Recidivism of Boot Camp Graduates.** The Commission's last Boot Camp Legislative Report presented the findings from a study on the impact of the 90-day aftercare program on the recidivism of Boot Camp graduates. In December 2002, this aftercare provision was reduced to 30-days, and this year's report examines the impact of the 30-day aftercare program on offender recidivism.

Who Goes to Boot Camp?

As indicated in the previous section, the Boot Camp's enabling legislation set forth the procedure by which offenders are selected for the Boot Camp Program. While the statute establishes the baseline eligibility criteria, it also provides that judges recommend eligible offenders for the program and that the Department of Corrections make the final determination concerning admission into the program. This section provides information on the characteristics of offenders who are admitted into the Boot Camp Program, based upon information received from the Department of Corrections.

Characteristics of Offenders Admitted to Boot Camp from 1992-2005

Table 1 provides the characteristics of offenders entering Boot Camp from 1992-2005. [See Appendix A for offender characteristics by year.] Since the opening of the Boot Camp in July 1992 through 2005 there have been 5177 offenders admitted to the program. Most of these offenders came from Philadelphia [23%] and Allegheny [11%] Counties. An additional 46% came from other urban counties in Pennsylvania, while about 20% came from rural counties.² Drug offenders comprise the majority of those admitted into the Boot Camp [67%] followed by those convicted of burglary or theft [14%]. Most offenders are male [96%], minority [51% Black and 15% Hispanic], and young [mean age of 25 years].

Trends. Charts 1a-f show the characteristics of offenders admitted to Boot Camp during the last fourteen years by county, offense, race/ethnicity, gender, and age. Overall, there has been a gradual increase in admissions, with 125 offenders entering the program during 1993 [the first full year of operation] and 461 during 2002, with the peak year for admissions being 2003 with 637 offenders. The profile of the offender entering the program has remained similar throughout the years, with the typical offender entering Boot Camp being a young, minority, male from an urban county who has been convicted of a felony drug offense.

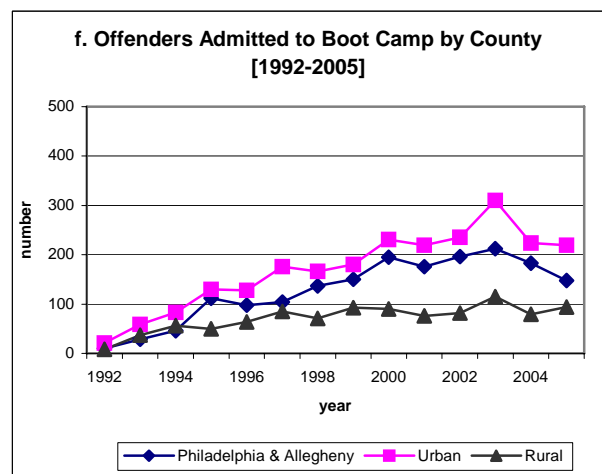
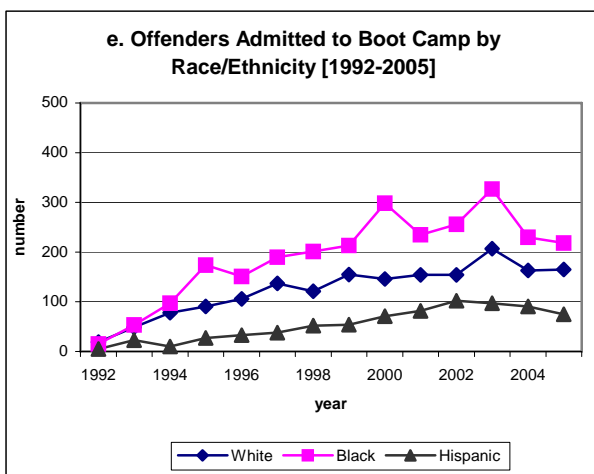
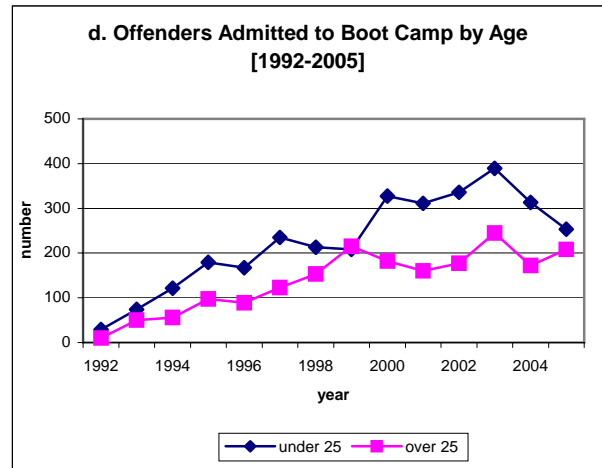
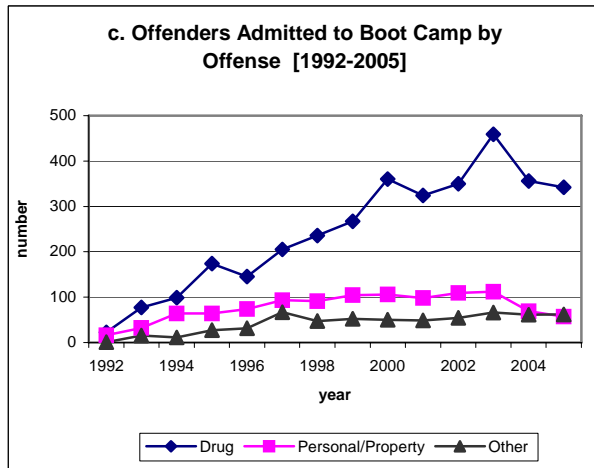
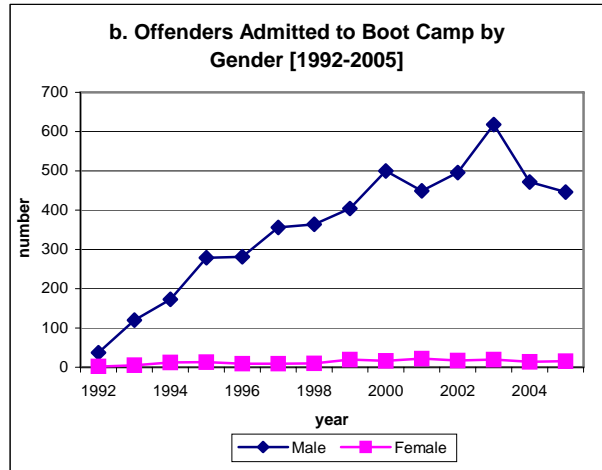
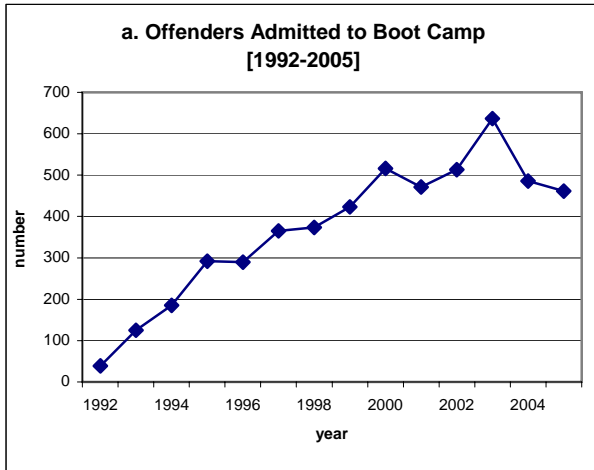
² Counties were classified as rural if designated as such by the Center for Rural Pennsylvania.

Table 1. Characteristics of Offenders Admitted to Boot Camp from 1992 through 2005 [N=5177]

COUNTY	Number	Percent	COUNTY [cont.]	Number	Percent
Adams	34	1%	Northhampton	78	2%
Allegheny	587	11%	Northumberland	44	1%
Armstrong	6	< 1%	Perry	21	< 1%
Beaver	34	< 1%	Philadelphia	1209	23%
Bedford	2	0%	Pike	7	0%
Berks	365	7%	Potter	5	< 1%
Blair	8	< 1%	Schuylkill	10	< 1%
Bradford	12	< 1%	Snyder	3	< 1%
Bucks	29	< 1%	Somerset	17	< 1%
Butler	26	< 1%	Sullivan	3	< 1%
Cambria	21	< 1%	Susquehanna	1	< 1%
Cameron	3	< 1%	Tioga	21	< 1%
Carbon	12	0%	Union	19	0%
Centre	46	< 1%	Venango	56	< 1%
Chester	133	3%	Warren	20	< 1%
Clarion	10	< 1%	Washington	20	< 1%
Clearfield	20	< 1%	Wayne	17	< 1%
Clinton	10	< 1%	Westmoreland	58	1%
Columbia	3	< 1%	Wyoming	9	< 1%
Crawford	27	< 1%	York	257	5%
Cumberland	50	1%			
Dauphin	338	7%	GENDER		
Delaware	328	6%	Male	4995	96%
Elk	3	< 1%	Female	182	4%
Erie	229	4%			
Fayette	78	2%	RACE/ETHNICITY		
Forest	3	0%	White	1745	34%
Franklin	50	1%	Black	2658	51%
Fulton	12	< 1%	Hispanic	760	15%
Greene	11	0%	Other	14	<1%
Huntingdon	10	< 1%			
Indiana	28	1%	AGE		
Jefferson	25	< 1%	Under 18	19	<1%
Juniata	2	< 1%	18-21	1328	26%
Lackawanna	47	1%	22-25	1808	35%
Lancaster	127	2%	26-29	1122	22%
Lawrence	4	0%	over 29	815	16%
Lebanon	8	< 1%	Mean *		25
Lehigh	117	2%	Median		24
Luzerne	47	0	Mode		21
Lycoming	137	3%			
McKean	17	< 1%	OFFENSE		
Mercer	62	1%	Felony Drugs	3397	67%
Mifflin	10	< 1%	Burglary/Theft	715	14%
Monroe	16	< 1%	Assault/Robbery	374	7%
Montgomery	150	3%	Other	612	12%
Montour	5	< 1%			

* The mean, median, mode are based upon admissions during 2002-2005.

Charts 1a-1f. The profile of the Boot Camp Offender has remained similar throughout the last fourteen years.



Boot Camp Offender Survey

This section of the report presents findings from a Boot Camp Offender Survey that the Sentencing Commission has been conducting for the last three years, with assistance from the Department of Corrections and the Board of Probation and Parole. Part I of the survey is a Self-Report Survey, designed to focus on factors that previous research has found to be related to criminal behavior, such as substance abuse, prior criminal activity, employment history, and family stability. Part II is a Boot Camp Evaluation Survey, which measures attitudinal changes along several dimensions that are addressed through the programmatic aspects of the Boot Camp, such as self-control, motivation for change, and decision-making. In addition, this survey also asks the offenders about their expectations of the program and whether those expectations were met. The responses from these surveys not only provide a more in-depth profile of the Boot Camp offender, but also are utilized in our research assessing the impact of the Boot Camp on attitudinal and behavioral changes, including recidivism.

Sample. The Boot Camp Offender Survey is administered to offenders at three points in time: 1) admission to the Boot Camp, 2) graduation from the Boot Camp, and 3) six months after graduation, while on parole. The Self-Report Survey is given at the admission and parole stages, whereas the Evaluation Survey is given at all three stages. The sample for the current study is based upon the 832 offenders who graduated from the Boot Camp Program between April 2001 and August 2005 and responded to the survey at all three phases. This represents a 42% response rate to all three phases of the survey, with most of the sample reduction occurring at the parole phase.³ While this response rate is consistent with other studies involving survey research, it always raises the concern that those who were included in the sample differ in some significant way from those who were not. The fact that we found few differences at the admission and graduation phases between those who responded to all three surveys and those who did not provides greater confidence that the sample is representative of offenders going through the program, but does not eliminate the concern.⁴

Boot Camp Offender Characteristics: Self-Report Survey

Table 2 provides demographic, criminal justice, and substance use information on the Boot Camp graduates, based upon their responses to the Self-Report Survey that is given to offenders at the admission stage. [See Appendix B for detailed information on the Self-Report Survey responses at the admission stage.] Consistent with the information provided in Part I of this Report, the Self-Report Survey provided a demographic profile of the typical Boot Camp offender as young [mean age of 25], black [45%], male [96%], and from an urban area [82%]. The survey also provided additional information on the offender with respect to marital status, children, living arrangements prior to arrest, educational attainment, and employment status.

³ Of the 1,983 offenders who graduated during this time period, 1,879 responded to the survey at the graduation phase and 938 responded at the parole phase, which represents a 95% and 47% response rate, respectively.

⁴ We conducted statistical tests of significance on those factors included in the Offender Survey and found only two factors for which there was a difference: race and age at first arrest. Offenders who were black and younger at first arrest were less likely to respond to the parole survey.

Table 2. Characteristics of Boot Camp Offender Survey Sample [N=832]

<u>Demographic Factors</u>	<u>Percent</u>	<u>Criminal Justice Factors</u>	<u>Percent</u>
Race		Current Offense	
White	36%	Drug	72%
Black	45%	Personal	9%
Hispanic	18%	Property	9%
Other	<1%	Other	9%
County		Prior Offenses [not mutually exclusive]	
Philadelphia	18%	Drug dealing	67%
Allegheny	16%	Drug use	51%
Other Urban	48%	DUI	33%
Rural	17%	Assault	24%
Age at BC Admission		Theft	17%
Mean	25	Burglary	16%
Gender		Age at First Arrest	
Male	96%	Mean	18
Female	4%	Family Member Ever Incarcerated	
Marital Status		Yes	53%
Married	11%	No	47%
Common-Law	10%	Friend Ever Incarcerated	
Single	79%	Yes	85%
Have Children		No	15%
Yes	64%	Victim of a Crime	
No	36%	Yes	53%
Children Living with you		No	47%
Yes	59%	Incarcerated as Juvenile [if arrested]	
No	41%	Yes	66%
Living Arrangement Prior to Arrest		No	34%
Spouse or Partner	48%	Ever Used Drugs	
Parent[s]	23%	Yes	90%
Alone	12%	No	10%
Other	17%	Age at First Drug Use	
Education Level		Mean age	15
Less than High School	46%	Using Drugs Day of Crime	
High School or more	54%	Yes	51%
Employment		No	49%
Full time	44%	Drinking Day of Crime	
Part time	11%	Yes	25%
In school	4%	No	75%
Working and in school	7%	Drug Use Month Prior to Arrest	
Looking for work	17%	Never	18%
Unemployed, not looking	17%	Less than once a week	11%
Length of Employment		Once a week	15%
Mean months	25	Daily	55%
Income Month Before Arrest		Type of Drugs Used	
Mean	\$1000-1199	Marijuana/hashish	86%
Major Source of Income		Cocaine	34%
Job	51%	LSD	15%
Illegal sources	34%	Barbiturates	13%
Other	15%	PCP	10%
Total	100%	Amphetamines	8%
Mother's Education		Tried to Quit Alcohol	
Less than High School	23%	Yes	32%
High School or more	77%	No	68%
Father's Education		Ever Afraid of Being Drug Addict	
Less than High School	28%	Yes	36%
High School or more	71%	No	64%
Childhood Living Arrangements		Tried to Quit Drugs	
Both parents	44%	Yes	61%
One parent	37%	No	39%
Other	18%	Ever Afraid of Being an Alcoholic	
		Yes	15%
		No	85%

* Some respondents did not answer all of the questions. See Appendix B for detailed information. All percentages may not equal 100% due to rounding.

Though only 21% reported being married [legally or common law], 48% indicated that they had been living with a spouse or partner prior to their arrest. Most offenders [64%], including many who reported never having been married, had at least one child, and 59% of these offenders said that their children were living with them prior to their arrest.

Most offenders were employed either full-time [44%] or part-time [18%]. The average length of employment was 25 months, though 26% of the offenders indicated that they had been at their job six months or less. The majority of offenders held manual labor jobs, such as construction and factory work, with an average monthly income between \$1,000-\$1,199. While 51% of the offenders said that their jobs were their primary source of income, 34% indicated that their income primarily came from illegal sources. Furthermore, those with higher incomes were more likely to indicate that the source was through illegal means.

Offenders were more likely to be raised by two parents [44%] than one parent [37%], with 18% indicating that they lived with others, such as their grandparents. Offenders reported that their parents were more likely than they were to have finished high school. While 54% of the offenders had completed high school, 77% of their mothers and 71% of their fathers had a high school education. In addition, both mothers [15%] and fathers [11%] were more likely than the offenders [3%] to have graduated from college.

Almost all of the offenders reported that they had been involved in prior criminal activity [mostly drug dealing and drug use], and the majority had family members [53%] or friends [85%] who had previously been incarcerated. Almost half of the offenders [47%] had been arrested as a juvenile, and of those, 66% had been incarcerated as a juvenile. A majority of offenders [53%] also reported having been the victim of a crime, primarily involving robbery, assault, and theft. Most offenders were in the Boot Camp for drug convictions [72%] and even more [90%] indicated that they had used drugs at some point in their lives. The drugs most frequently used the year before their arrest were marijuana [86%] and cocaine [34%]. Offenders reported being younger [average age of 15 years] when they first tried drugs than when they were first arrested for a crime [average age of 18 years].

The frequency of reported alcohol use was less than the frequency of reported drug use. Beer and liquor were strongly preferred over wine, though much less likely to be consumed on a daily basis [20%, 10%, 1%, respectively] than drugs [55%]. While more offenders reported fear of drug addiction than alcoholism [36% vs. 15%], most were not fearful of having either substance abuse problem. However, 61% of the offenders did report that they had, at some point, tried to quit taking drugs in comparison to 32% of offenders who indicated that they had attempted to quit drinking alcohol. Offenders were more likely to report using drugs [51%] than alcohol [25%] the day they committed their offense.

Offender Expectations of Boot Camp: Evaluation Survey

This section of the report discusses the expectations that offenders had upon entering the Boot Camp, and whether those expectations were met.⁵ Overall, the majority of offenders expressed favorable opinions of the Boot Camp at all three stages: admission, graduation, and parole. In addition, about 90% of the respondents consistently responded at all three stages that they were proud at being accepted into the program. However, their responses also indicated somewhat of a divergence between what they expected and what they experienced. Charts 2a-i present those questions for which there was the most significant change in the offenders' responses between admission and both graduation and parole.⁶ [See Appendix D for responses to the entire Evaluation Survey at all three stages.] It should be noted that when a finding is referred to as being significant in this report, it means that the finding was statistically significant.⁷

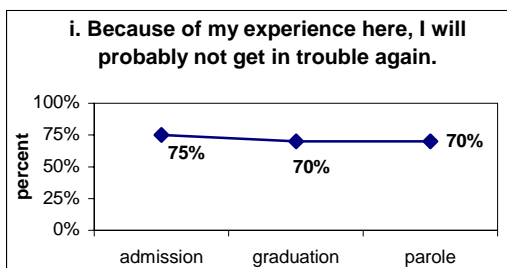
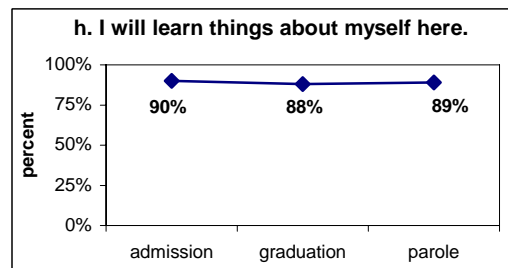
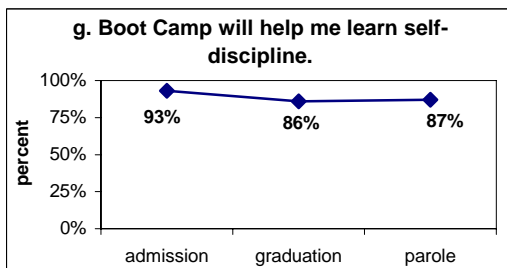
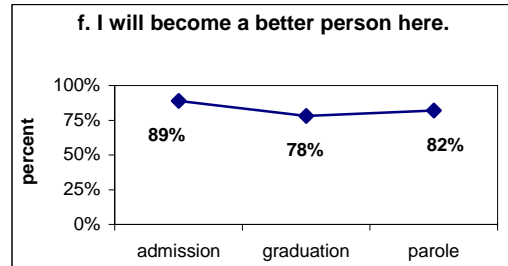
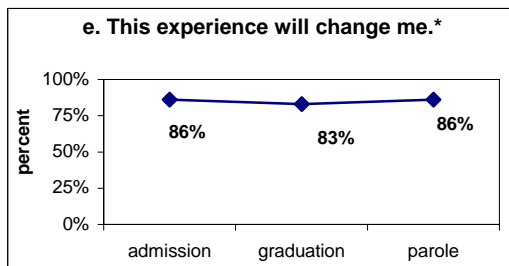
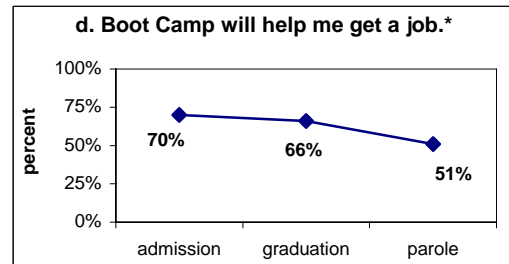
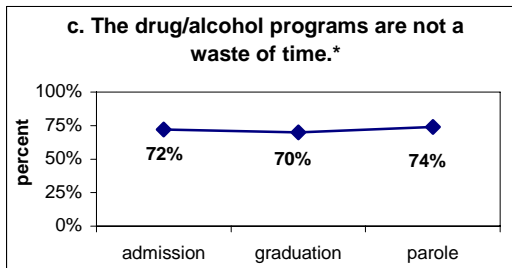
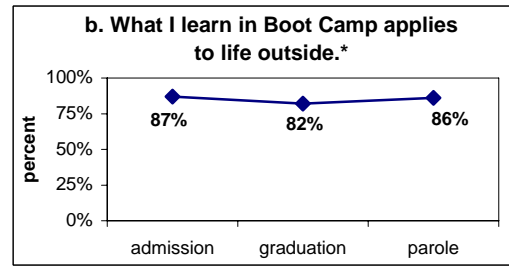
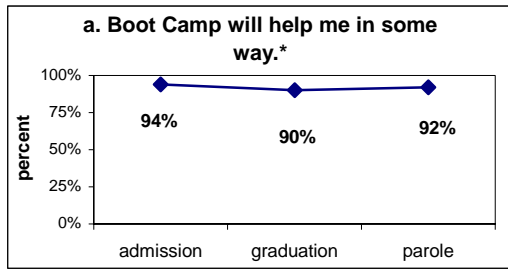
Offenders had high expectations that the Boot Camp would have a positive impact on their lives and provide positive personal change. While most graduated from the program expressing that they had indeed benefited from the experience, they were significantly more likely to respond at admission than at graduation and parole that Boot Camp would help them get a job [70%, 66%, 51%], would change them [86, 83%, 86%], help them in some way [94%, 90%, 92%] or apply to life outside [87%, 82%, 86%]. In addition, offenders were also significantly more likely to indicate at admission than at graduation and parole that Boot Camp would result in learning self-discipline [93%, 86%, 87%], learning things about themselves [90%, 88%, 89%] becoming a better person [89%, 78%, 82%], and reducing the likelihood that they would get into trouble again [75%, 70%, 70%]. Interestingly, perceptions concerning the benefit of the drug and alcohol programs, while overall positive, changed in both directions. That is, upon entering the Boot Camp Program, there was a rather large percentage of offenders [26%] who were undecided about whether these programs would be worthwhile. After attending Boot Camp, offenders were more likely to indicate that substance abuse programs were not a waste of time [72%, 70%, 74%], though a greater difference occurred in the opposite direction. That is, though only 1% of the offenders responded at admission that substance abuse programs would be a waste of time, 17% felt this way at graduation and 13% at parole.

⁵ The questions used to measure offender expectations were from the scales developed by MacKenzie and her colleagues in their evaluation of boot camps in other states [see MacKenzie and Souryal, "*Multisite Evaluation of Shock Incarceration*" National Institute of Justice, 1994]. Survey length limitations necessitated using an abbreviated version of their original survey, which included more scales.

⁶ In determining whether a significant change occurred, we used the Paired Sample T-Test of Means.

⁷ The accepted standard for determining whether a finding is significant is the .05 level. Statistically significant at the .05 level means that the chances that the observed change could have occurred by chance is 5 out of 100; at the .001 level it means that the chances are 1 out of 1,000. For the purposes of this report, when we use the word 'significant', we mean 'statistically significant' at the .05 level or higher.

Charts 2a-i. Offenders have high expectations of Boot Camp.



*For ease of discussion, we reversed the direction of this question from that in the actual survey.

Attitudinal Changes among Boot Camp Graduates:

The Boot Camp Evaluation Survey was designed to measure whether attitudinal changes occurred among graduates in the following areas: 1) self-control, 2) self-efficacy, 3) decision-making skills, 4) motivation for treatment, and 5) opportunities for the future.⁸ The survey consisted of 83 questions with five response choices: 1) strongly disagree, 2) disagree, 3) undecided, 4) agree, and 5) strongly agree. We discuss below the three significant areas in which positive attitudinal changes occurred among graduates of the program: decreased impulsivity [a subscale of the self-control dimension], increased decision-making skills, and less problems with substance abuse. All three of these attitudinal shifts continued at the parole stage.

Impulsiveness

As one of the legislative objectives of the Boot Camp was to instill self-discipline, we were interested in examining whether offenders gained a better sense of self-control after going through the program. While the Self-Control Scale used for this study consists of six sub-parts [impulsiveness, simple tasks, risk taking, physical activities, self-centeredness, and temper], the most significant changes were found with respect to impulsiveness. Offenders indicated that they were significantly less likely to engage in impulsive behavior after going through Boot Camp, a characteristic that endured at the parole stage. Charts 3a-c show that offenders were more likely at admission, than at graduation and parole, to respond that they didn't devote much thought and effort to preparing for the future [19%, 5%, 8%], did what brought pleasure even at the cost of a distant goal [32%, 20%, 16%], and acted on the spur of the moment without stopping to think [40%, 24%, 16%].

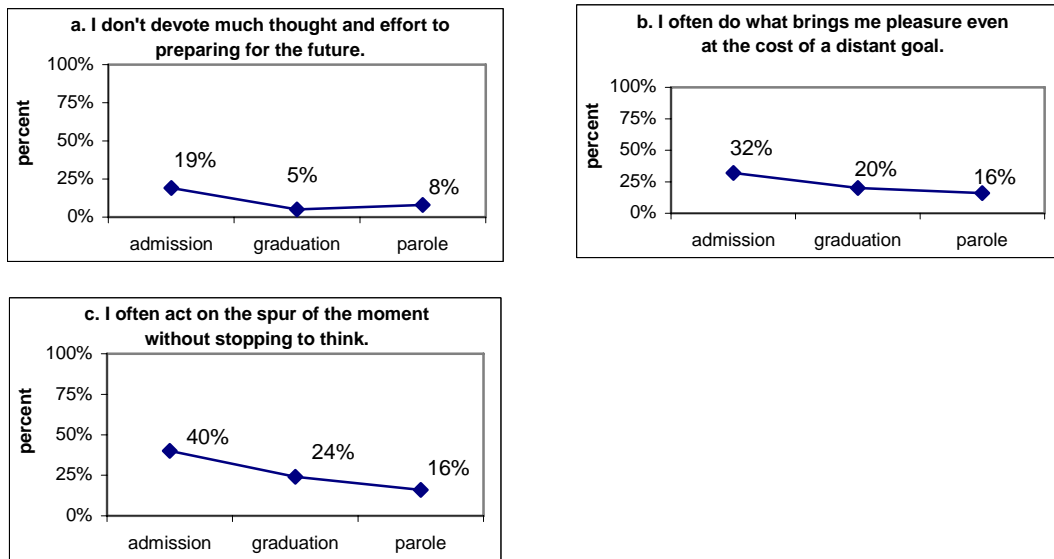
Decision-Making

Consistent with our findings presented in previous Legislative Reports, we again found that there was a pronounced change in offenders' decision-making capabilities after they attended Boot Camp. We have speculated that this finding is most likely related to the Boot Camp's implementation of the National Institute of Correction's *Thinking for a Change* program in July 2000. This program, which is designed "to effect change in thinking so that behavior is positively impacted",⁹ offers a blend of cognitive restructuring, social skills development, and problem solving skills. The underlying philosophy of the program is that offenders can be taught to be responsible for changing their behavior if equipped with the appropriate tools. Offenders

⁸ Questions used to measure self-control were from the Self-Control Scale developed by Harold Grasmick [see Grasmick, Tittle, Bursik Jr., and Arneklev, "Testing the Core Empirical Implications of Gottfredson and Hirschi's General Theory of Crime," *Journal of Research in Crime and Delinquency*, Vol. 30, No. 1, February, 1993]. Questions used to measure self-efficacy, decision-making, and motivation for treatment were from scales developed by researchers at the Institute of Behavioral Research at Texas Christian University and are used in their evaluations of correctional treatment programs [see Simpson, D. D. (2001). Core set of TCU forms. Fort Worth: Texas Christian University, Institute of Behavioral Research, www.ibr.tcu.edu].

⁹ *Thinking for a Change: Integrated Cognitive Behavior Change Program*, by Bush, J., Glick, B. and Taymans, J., National Institute of Corrections, 1999, page 6.

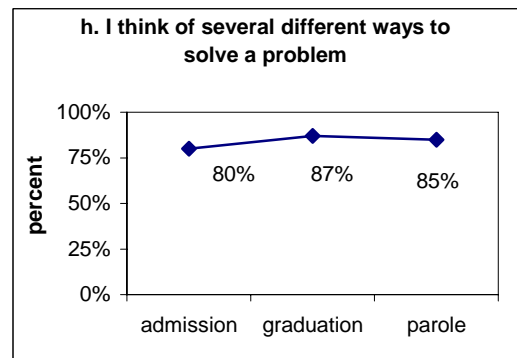
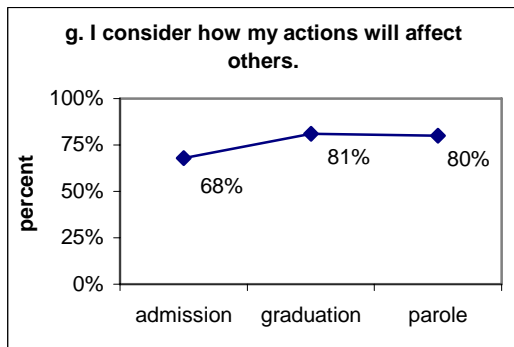
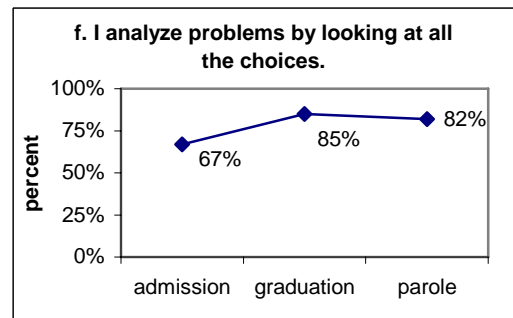
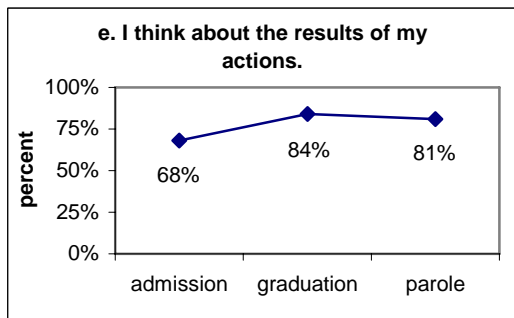
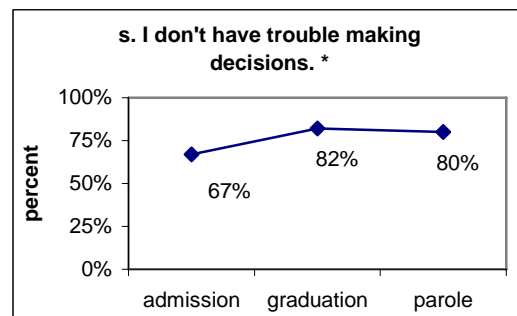
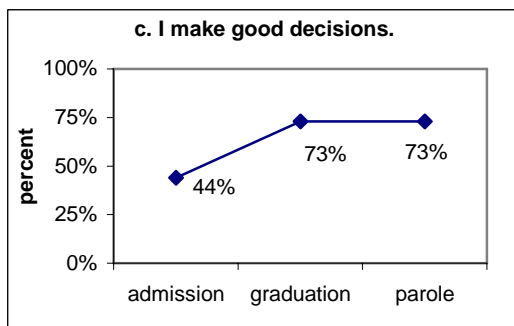
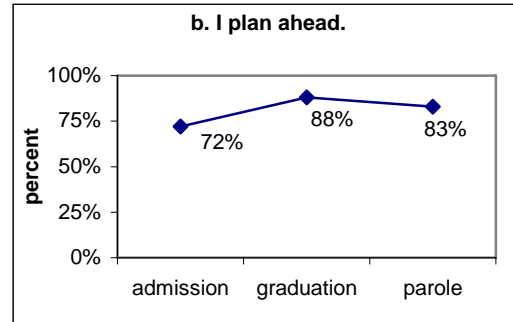
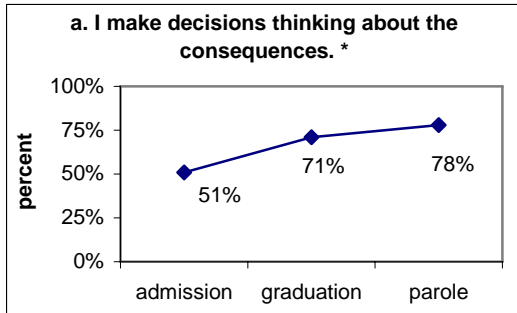
Charts 3 a-c. Offenders report a decrease in impulsive behavior.



are taught to identify thinking and actions that can lead to criminal behavior and how to replace these with pro-social attitudes and behavior. The core program consists of 22 lessons addressing issues such as: active listening, proper feedback, how thinking controls actions, recognizing thought processes that lead to trouble, responding to anger, and understanding the feelings of others. In addition, and of particular interest to our findings presented in this section of the report, are the lessons taught to enhance decision-making capabilities such as: problem solving, setting a goal, choices and consequences of one's actions, making appropriate decisions, and evaluating those decisions.

As shown in charts 4a-h, there is evidence that the *Thinking for a Change* program has the intended positive impact of changing the offender's approach to problem solving. That is, offenders were significantly more likely to: think about the consequences of their decisions [51%, 71%, 78%], plan ahead [72%, 88%, 83%], make good decisions [44%, 73%, 73%], have less trouble making decisions [67%, 82%, 80%], think about the results of their actions [68%, 84%, 81%], analyze problems by looking at all the choices [67%, 85%, 82%], think of several ways to solve a problem [80%, 87%, 85%], and consider how their actions affect others [68%, 81%, 80%]. However, it should be noted that as we do not have survey responses from offenders who attended the Boot Camp prior to the implementation of *Thinking for a Change*, we can only speculate that it is this specific aspect of Boot Camp that results in improved decision-making capabilities.

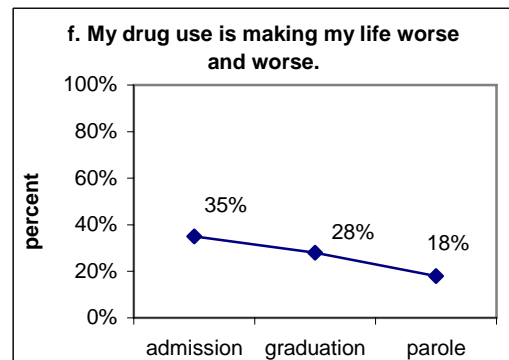
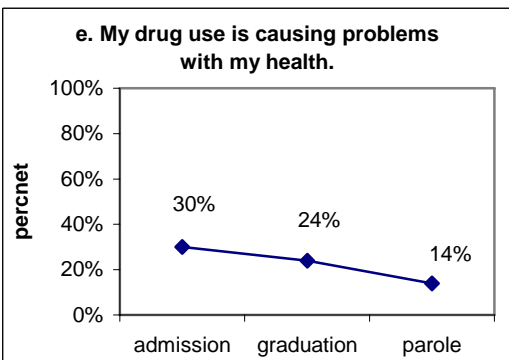
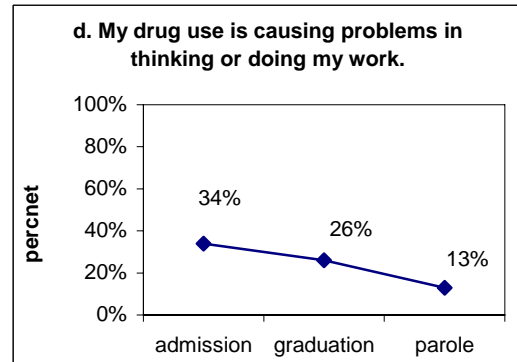
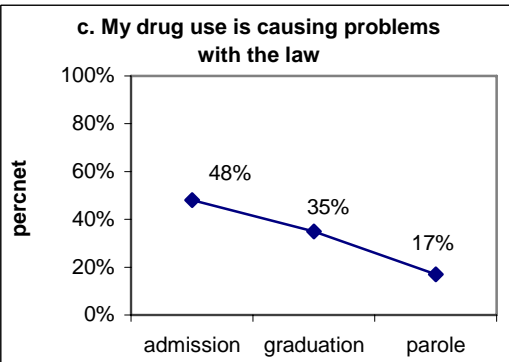
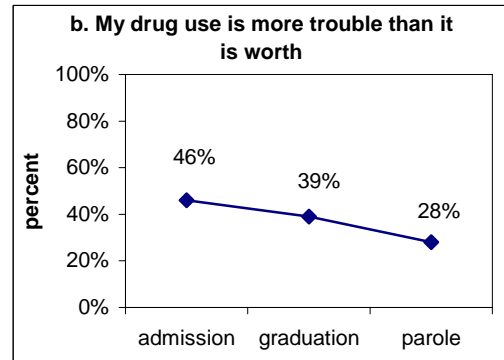
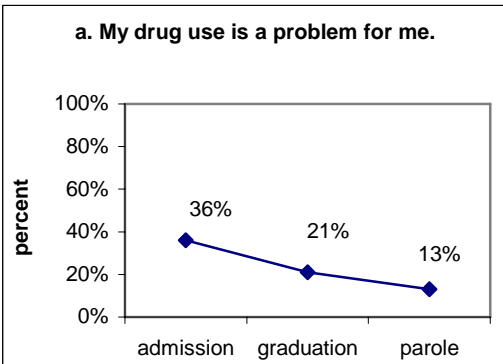
Charts 4 a-g. Offenders Indicate improvement in their decision-making skills



Problems with Drugs

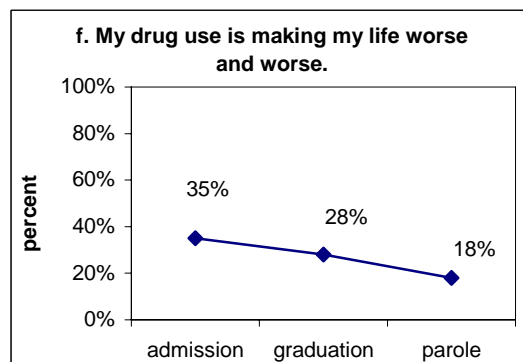
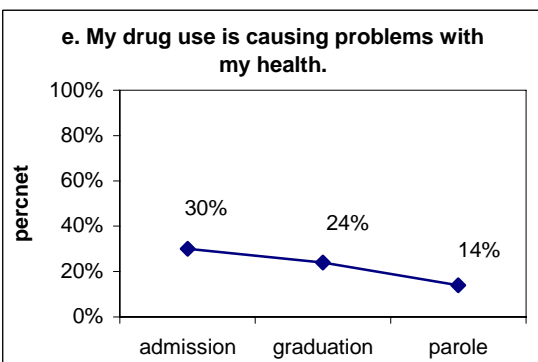
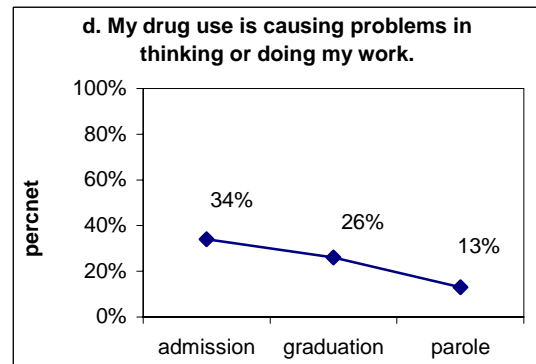
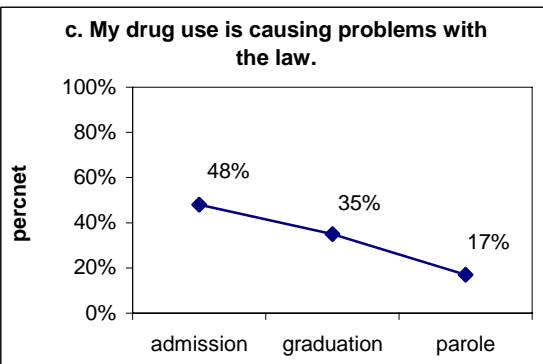
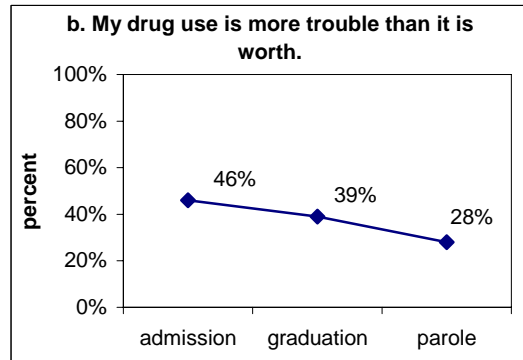
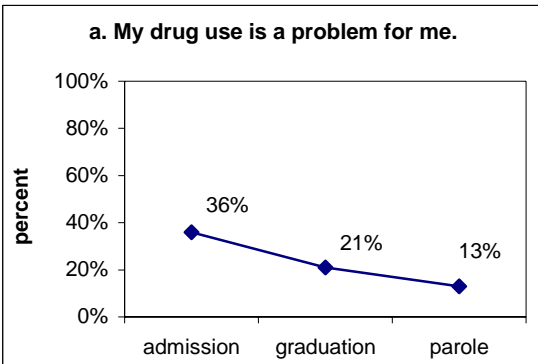
In the Boot Camp's enabling legislation, the Legislature recognized "that the frequency of convictions is attributable in part to the increased use of drugs and alcohol", and as a result mandated that the Boot Camp offer substance abuse treatment [Act 215 of 1990]. In response, a major focus of the Boot Camp has been a requirement that all offenders participate in substance abuse treatment and education. Thus, one area of the Offender Survey examined the offenders' attitudes toward their drug problem. Overall, though most offenders did not view their drug use as presenting problems for them when they entered the Boot Camp, a sizable percentage did indicate the negative impact that drugs were having in their lives. Further, offenders report having fewer problems with drugs after graduating from Boot Camp and while on parole. Charts 5a-f show that offenders were significantly less likely after Boot Camp than before to view drugs as being a problem for them [36%, 21%, 13%], making their lives worse [35%, 28%, 18%], creating more trouble than they were worth [46%, 39%, 28%], causing trouble with the law [48%, 35%, 17%], their work [34%, 26%, 13%], or health [30%, 24%, 14%]. In addition, as shown in Charts 6a-e, offenders were significantly less likely to report needing help with their drug use [35%, 19%, 11%], having an urgency to find help for their drug problem [28%, 16%, 12%], feeling that their lives were out of control [38%, 22%, 11%], being tired of the problems caused by drugs [65%, 60%, 45%], and wanting to get their lives straightened out [95%, 90%, 78%].

Charts 5a-f. Offenders report less problems with drugs after Boot Camp*



* The percentages represent those offenders who agree or strongly agree with the question.

Charts 5a-f. Offenders report less problems with drugs after Boot Camp. *



* The percentages represent those offenders who agree or strongly agree with the question.

Self-Reported Behavioral Changes among Boot Camp Graduates

Thus far, the report has discussed how offenders attending the Boot Camp program appear to experience some significant attitudinal shifts with respect to impulsiveness, decision-making, and substance abuse. The question that arises is whether these offenders also make positive behavioral changes in areas of their lives that can impact their decisions to desist from committing crime.

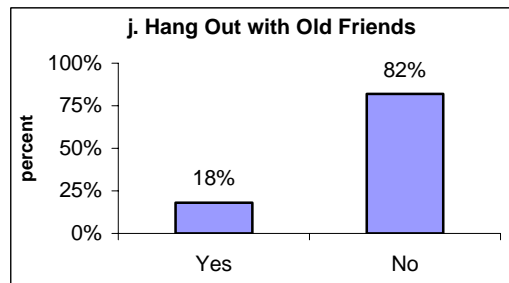
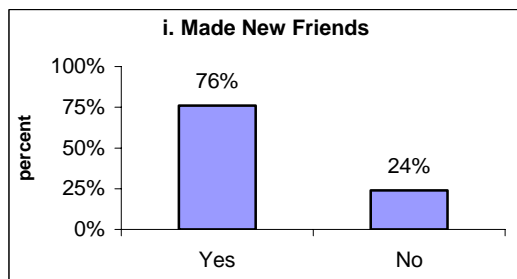
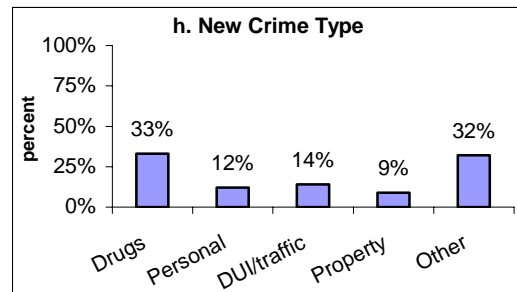
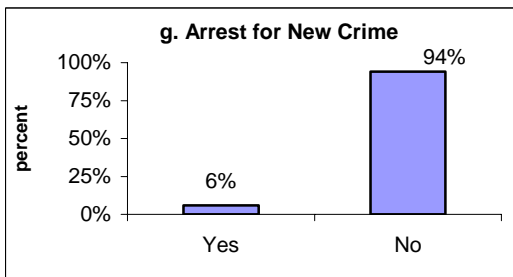
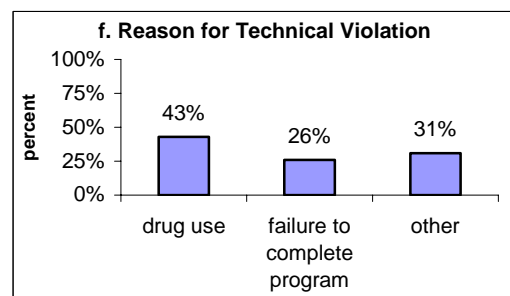
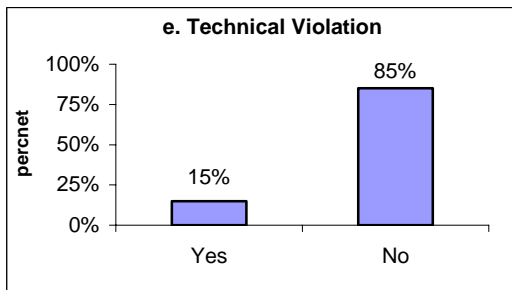
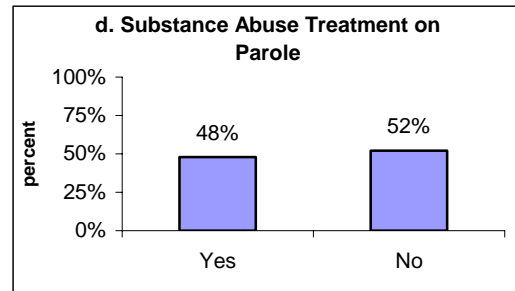
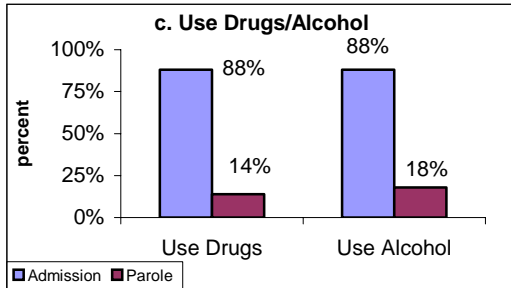
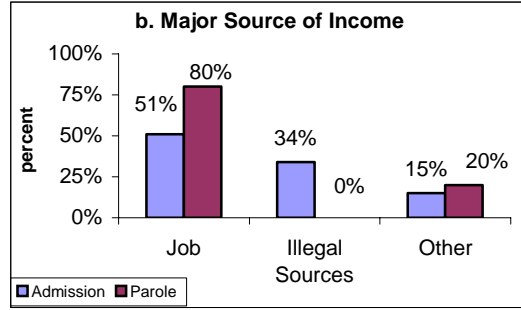
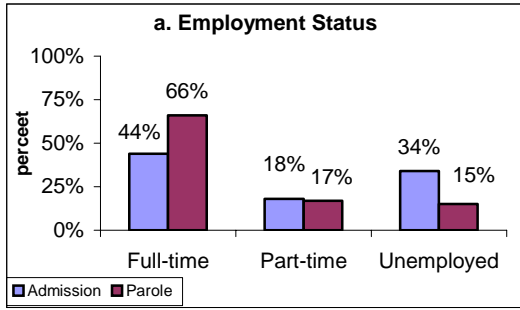
Charts 7a-d provide responses from the Offender Survey on factors that have been associated with criminal activity, such as employment status, source of income, and use of drugs and alcohol. Offenders were asked about these dimensions at both the admission and parole stage to determine whether any differences occurred. [See Appendix C for responses to all of the questions on the Self-Report Survey at the Parole Stage]. In all of these areas, offenders indicate some positive behavioral changes. After Boot Camp, offenders were more likely to be employed full-time [66% vs. 44%], have their job be their major source of income [80% vs. 51%] rather than illegal sources [0% vs. 34%], and less likely to use drugs [14% vs. 88%] or use alcohol [18% v. 88%]. Almost half [48%] of the offenders reported receiving substance treatment while on parole [Chart 7d].

In addition, a minority of the offenders reported having a technical violation [15%] or being arrested for a new crime [6%], with drug use being the most common reason [43%] given for a technical violation and drug offenses being most cited for new arrests [Charts 7e-h].

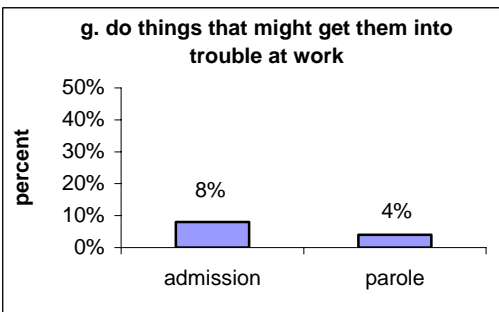
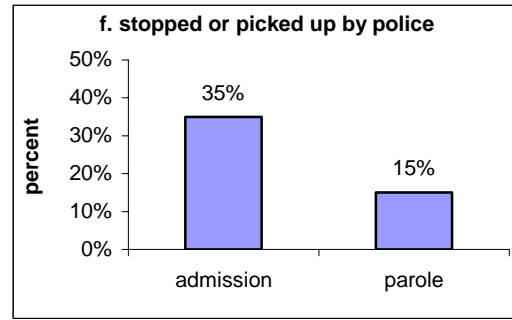
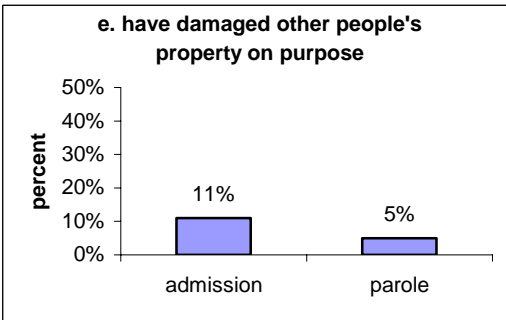
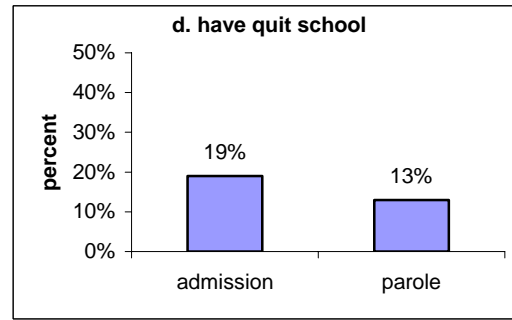
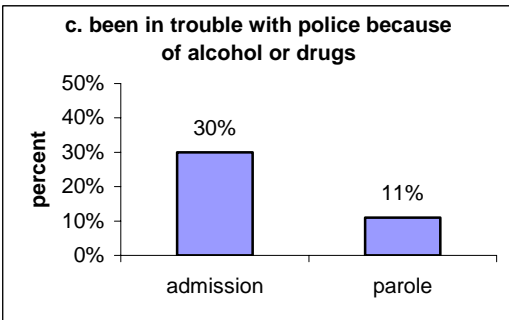
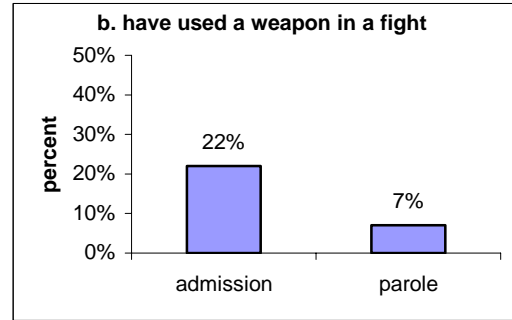
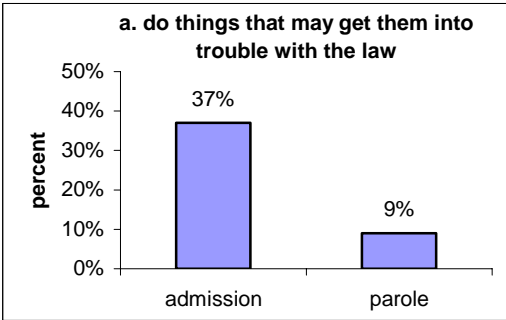
Association with 'Friends-in-Trouble'. Previous research has indicated that association with delinquent friends is highly correlated with criminal activity, and thus we included this dimension in our survey. Earlier we discussed how most of the offenders reported having friends who, not only were involved in delinquent activity, but also had been incarcerated as juveniles. However, offenders stated that they would be willing to avoid old friends in order to solve their drug problem. Charts 7i-j indicate that the majority of offenders had indeed made new friends [76%] and did not hang out with old friends [82%] after they graduated from Boot Camp. In addition, offenders reported a significant shift in the type of friends they had.¹⁰ Charts 8a-g show that offenders were significantly less likely after Boot Camp than before to have friends who do things that could get them in trouble with the law [9% vs. 37%], used a weapon in a fight [7% vs. 22%], been in trouble with police because of alcohol or drugs [11% vs. 30%], quit school [13% vs. 19%], damaged other people's property on purpose [5% vs. 11%], were stopped by police [15% vs. 35%], and did things that might get them into trouble at work [4% vs. 8%].

¹⁰ The Friends-in-Trouble Scale is a subset of a larger Family and Friends Scale that was developed by researchers at the Institute of Behavioral Research at Texas Christian University and has been used in their evaluations of adolescent programs. [see Simpson, D. D. (1998). TCU data collection forms for adolescent programs. Fort Worth: Texas Christian University, Institute of Behavioral Research, www.ibr.tcu.edu.] Due to space limitations on our survey, we used the two subscales that captured what previous research has found to be related to criminal activity.

Charts 7a -j. Offenders report positive behavioral changes after Boot Camp.



Charts 8 a -g. Offenders report having fewer 'friends-in-trouble' after Boot Camp..



Note: Comparisons reflect the percentage of offenders indicating that most or all of their friends do the indicated behavior. All of the differences are significant at .001 level.

Offenders' Comments on Boot Camp

On the survey given at the parole stage, we ask offenders whether they would like to make any additional comments on the Boot Camp Program. Over half [51%] of the offenders in our sample chose to comment, and the vast majority of them have positive statements to make about the program, as indicated by the examples provided in Table 3. Many of the comments support the Boot Camp's objectives of reducing crime ["helped realize crime doesn't pay", "if it wasn't for you, I'd be locked up"], instilling discipline ["I learned a lot of discipline I never had"], increasing self-control ["I learned patience and self-control"], encouraging critical thinking ["The boot camp changed...my thinking skills"], and providing education ["you have an excellent GED program"]. In addition offenders stated that Boot Camp was a 'life-changing' experience, that their lives were "110% better" because of it, and that the program helped them develop self-confidence and self-worth.

Offenders also offered some suggestions for improving the program such as offering classes on financial planning. As one offender said, "Most of us led an extravagant lifestyle prior to incarceration. When released we find ourselves often working for \$6-\$7 an hour, so maybe some classes on budgeting or base financial planning?" Although offenders stated that the program was "a great opportunity for first-time felon's to get their lives back on track and to start over", they also suggested that a hotline be available for those on the "verge of re-offending". Offenders also expressed interest in obtaining employment and would like to see more work certification programs offered. One offender offered to help the program out in any way while another wanted to know when he could return for a visit.

Table 3. Offender's comments on Boot Camp are positive.*

It is a good program for changing lives if you want to better yourself. If I didn't go there I probably go back to the streets and end back in prison. Thank You!!!

I would like to thank all of the officers and counslers for all of their motivation help. My experiences at Boot Camp have made me a better person.

Program was wonderful. Would like to come back and speak to others in the program.

Thanks for showing me a different aspect of life.

I've learned a lot of discipline that I never had. It's changed my life for the better

Nice to have a program that makes you realize your actions have consequences to others.

BC a thrilling experience; Opportunity to reflect and changed me forever; Thank you

BC is helpful as long as you want to help yourself

Boot Camp changed my life, my thinking skills, and relationships with friends, family, are better.

I believe that the boot camp program is a great opportunity for firs-time felon's to get their lives back on track and to start all over.

Boot camp helped my develop a sense of my self worth. I learned discipline, I'm stronger phyuscially and mentally than I was before the program.

Boot Camp should have a program for individuals on verge of re-offending and also have a hotline available.

Better than prison (cleaner, safer, more treatment)

Best thing that ever happened; was exactly what was needed to straighten myself up; thank you.

Great, i learned a lot and boosted my self confidence

Helped realize crime doesn't pay

I just want to say thanks to all the staff for helping me out because if it wasn't for you, i'd be locked up.

I'm doing real good out here. i have a nice job and this was my first job

I really enjoyed my experience you have an excellent GED program

It helped me a lot. it was my failure to follow thru with my support groups that caused me to use [drugs].

It was a life-changing 6 months

It was a very good program and it had helped me out a lot. My life is 110% better because of it

Most of us led an extravagant lifestyle prior to incarceration. When released we find ourselves often working for \$6-\$7 an hour, so maybe some classes on budgeting or base financial planning?

I learned patience and self control, no goal can't be reached

When can I come back and visit.

* These are the direct quotes from the offender surveys with no grammatical corrections.

The Impact of Aftercare on the Recidivism of Boot Camp Graduates

A major purpose behind the creation of Pennsylvania's Motivational Boot Camp Program was to reduce criminal behavior, as indicated below in its enabling legislation:

“The Commonwealth, in wishing to salvage the contributions and dedicated work which its displaced citizens may someday offer, is seeking to explore alternative methods of incarceration, which might serve as the catalyst for reducing criminal behavior.” [Act 215 of 1990].

To address this concern, the Sentencing Commission has undertaken several recidivism studies to examine whether the Boot Camp has had the intended impact on reducing crime. In an earlier study comparing the recidivism rate of Boot Camp graduates with that of a comparable group of offenders released from prison, we found no significant difference in the overall rate of recidivism, though there was some evidence that the recidivism of Boot Camp offenders was of a different nature. That is, in comparison to offenders released from prison, Boot Camp graduates were more likely to have technical violations and less likely to have been convicted of a new crime, though this finding was not significant. [See *Pennsylvania's Motivational Boot Camp Program: 2000 Report to the Legislature*]. We speculated that this finding could be a result of Boot Camp graduates being under intensive supervision in the community as required by statute. [Act 215 of 1990].

In subsequent studies, we also found that offenders who are young, commit crime at an earlier age, are non-white, from urban areas, use drugs, and have had friends and/or family members incarcerated are more likely to recidivate, with the most consistent predictor of recidivism being the employment status of the offender. In those studies, we have found that offenders who are employed after graduating from Boot Camp are significantly more likely to desist from committing crime. [See *Pennsylvania's Motivational Boot Camp Program: 2000 Report to the Legislature and Pennsylvania's Motivational Boot Camp Program: 2002 Report to the Legislature*]. The fact that offenders report having a full time job more often after Boot Camp than before is encouraging, as is their reported decline in using drugs and alcohol and association with delinquent friends. [See *Pennsylvania's Motivational Boot Camp Program: 2000 Report to the Legislature and Pennsylvania's Motivational Boot Camp Program: 2002 Report to the Legislature*]. Numerous studies have suggested that the continued success of maintaining employment, avoiding substance abuse, and associating with 'law-abiding' friends is bolstered by an aftercare program that provides services and support for positive behaviors that are related to decreased criminal activity.

Previous Study: Impact of 90-day Aftercare Program.

In an effort to provide more structured aftercare, a new policy was implemented in March 2002 that required a minimum of 90 days of aftercare for Boot Camp graduates. This 90-day period could be extended if deemed necessary by the Parole supervision staff. This structured re-entry program was designed to provide for a smoother transition to the community by offering offenders assistance with job readiness skills, job acquisition, and substance abuse follow-up while living in a supervised, residential facility. The focus of our *2004 Legislative Report* was to examine the impact of the 90-day mandatory aftercare policy on reducing the criminal activity of Boot Camp graduates by comparing the re-arrest rates of offenders who participated in the 90-day aftercare program with those who graduated from the program prior to the implementation of

the 90-day aftercare policy. In that study, we found that, even when controlling for other factors responsible for recidivism that the offenders who participated in the 90-day aftercare program were significantly less likely to be re-arrested than those who had not participated in the program. Additionally, we found that offenders who were non-white, had a more extensive prior record, and who indicated that they had difficulty controlling their temper were also more likely to be re-arrested.

Current Study: Impact of 30-day Aftercare Program

The Boot Camp's 90-day aftercare program, which was implemented in March 2002, was reduced to a 30-day minimum aftercare program in January 2003, and continues to be the current policy. As with the 90-day program, offenders may be required to stay beyond the 30 days if the parole supervision staff thinks that is necessary. Thus, as a follow-up to our study of the 90-day aftercare program, the focus of the current study is to examine the impact of the 30-day program on recidivism.

Sample. The study employs a quasi-experimental research design that compares the recidivism rates of three groups of Boot Camp graduates: 1) offenders who graduated from Boot Camp prior to the implementation of the mandatory aftercare program [April 2001 through February 2002], 2) offenders who graduated from Boot Camp and participated in the 90-day aftercare program [March 2002 through December 2002], and 3) offenders who graduated from Boot Camp and participated in the 30-day program. [February 2003 through October 2003]. The total sample consisted of 1,091 offenders, with 374 in the pre aftercare group, 342 in the 90-day aftercare group, and 375 in the 30-day aftercare group.

Measuring Recidivism. For the purposes of our current study, we are using two measures of recidivism: re-arrest for a new crime and return to prison for a technical violation. We obtained the arrest information from the Pennsylvania State Police, and the technical violator information from the Department of Corrections. We used a two-year tracking period for each offender in order to equalize the 'time on the street' exposure time.

Independent Variables. One of the advantages to this study is that we were able to examine the impact of individual versus programmatic characteristics on criminal behavior. We have a great deal of information about the offenders through the Self-Report Survey given at the time of admission to the Boot Camp, including demographics [e.g., race, age, marital status], background [e.g., living arrangements growing up, education, employment history], criminal history [type of previous crime, victim of crime] and substance abuse history [type and extent of abuse, previous treatment]. From the Boot Camp Evaluation Survey we were able to measure benefits that offenders obtained from the programmatic features of the Boot Camp. For example, in the previous section we discussed how offenders made significant gains in the areas of better decision-making and thus, we include in our analyses the scales measuring these attitudinal changes to see their influence on reducing criminal behavior.

Findings: What Factors Predict Recidivism

To answer our primary research question concerning the impact of the 30-day aftercare program,

we first replicated the analysis of our previous 90-day study. In doing so, we found that while the direction of the finding concerning aftercare was the same [i.e., those who went through the 90-day aftercare program were less likely to be re-arrested], the results were not significant. [The significance level was .10, which some view as marginally significant, but is not up to the accepted standard of .05]. There were primarily two reasons for this change in the finding: 1) we had 6 offenders in our study who had died, but we did not have that information for our previous study - they were viewed as successes in our previous study, as they had no arrest; and 2) we received arrest information on 16 people in our 90-day aftercare group for this study that was not in the criminal history information that we received for our previous study

The analysis for the current study expanded upon that of the previous study by not only looking at re-arrests, but also at technical violations, as a measure of recidivism.¹¹ We included in our analysis information that we obtained from the Offender Survey and criminal history records. We present the findings in two ways. First, the bivariate results indicate which factors are significantly related to recidivism when examined individually. Second, the multivariate [polynomial logistic regression] results indicate which factors are significantly related to recidivism while controlling for factors simultaneously.

Bivariate Results. Table 4, which presents the results of the bivariate analysis, shows that the overall success rate for offenders in our study was 51%, with 19% of the offenders being returned to prison for a technical violation and 31% re-arrested for a new crime. Although the success rate for all three groups in the study was the same, the 90-day aftercare group had a higher rate of technical violations than the pre-aftercare group or 30-day aftercare group [21%, 16%, 19% respectively], and a lower rate of arrests [27%, 33%, 32%, respectively]. This finding, however, was not significant.

Demographic Factors. With respect to demographic information, factors significantly related to recidivism were race, county, education, and employment. Neither gender [though there were relatively few women], age, nor marital status were found to be significantly related to recidivism. Overall, white offenders had the highest success rate [58%] compared to black [47%] and Hispanic [49%] offenders. The type of recidivism also varied with respect to race with white offenders being more likely than either black or Hispanic offenders to have technical violations [23%, 16%, and 19%] while black and Hispanic offenders were more likely than white offenders to have a re-arrest for a new crime [38%, 33%, 20%]. While offenders from the two major urban areas, Philadelphia and Allegheny Counties, had the highest success rate, when they did recidivate they were more likely than offenders from less urban counties and rural counties to be arrested [34%, 32%, 25%] and less likely to have technical violations [11%, 22%, 23%]. However, this finding should be viewed with caution as we were missing county information on 23% of the sample. Offenders who had received education beyond high school were most likely to succeed, whereas those with less than a high school education had both higher rates of technical violations than those who had a high school degree or had continued their schooling beyond high school [23%, 18%, 13%]. Offenders were significantly more likely to succeed if they were employed full-time [57%], part-time [52%], going to school [53%] or

¹¹ While we did not specifically use technical violations as a measure of recidivism in our last study, we did take into account offenders who were incarcerated for a technical violation during the two year tracking period for the purposes of the survival analysis.

Table 4. Recidivism Rates For Boot Camp Offenders by Factors Included in Recidivism Study [N=1091]

	Percent of Offenders			Number of Offenders			TOTAL
	Success	Technical Violation	Arrest	Success	Technical Violation	Arrest	
OVERALL	51%	19%	31%	551	203	337	1,091
Aftercare Group							
no aftercare	51%	16%	33%	190	60	124	374
90 day aftercare	51%	21%	27%	175	73	94	342
30 day aftercare	50%	19%	32%	186	70	119	375
DEMOGRAPHIC FACTORS							
Gender							
male	50%	19%	31%	531	199	329	1,059
female	63%	13%	25%	20	4	8	32
Race ***							
white	58%	23%	20%	196	77	67	340
black	47%	16%	38%	252	84	203	539
hispanic	49%	19%	33%	100	39	67	206
Mean Age at admission	25 yrs	25 yrs	25 yrs	548	202	334	1084
Marital Status							
not married	51%	18%	30%	453	160	268	881
married	47%	20%	34%	94	39	67	200
County **							
Philadelphia/Allegheny	54%	11%	34%	175	37	111	323
other urban	46%	22%	32%	180	86	127	393
rural	52%	23%	25%	65	29	31	125
Education **							
less than High School	47%	23%	31%	242	118	160	520
High School	50%	18%	33%	132	47	87	266
more than High School	59%	13%	28%	168	36	79	283
Employment / School Prior to Boot Camp ***							
full time	57%	17%	25%	243	74	107	424
part time	52%	17%	31%	63	21	38	122
in school	53%	13%	34%	20	5	13	38
working and school	62%	13%	25%	49	10	20	79
looking for work	44%	20%	36%	86	38	70	194
not looking,unemployed	36%	25%	39%	74	51	80	205
On Parole ***							
full time	64%	14%	22%	219	48	75	342
part time	58%	11%	31%	38	7	20	65
in school	29%	29%	41%	5	5	7	17
working and school	76%	5%	19%	28	2	7	37
looking for work	41%	23%	36%	31	17	27	75
not looking,unemployed	12%	41%	47%	2	7	8	17
Mean Mos on job prior to BC *	26 mos.	21 mos.	19 mos.	340	104	158	602
CRIMINAL JUSTICE FACTORS							
Current Offense **							
drugs	52%	16%	32%	382	114	232	728
personal	56%	16%	28%	55	16	27	98
property	45%	34%	21%	45	34	21	100
other	41%	28%	31%	39	26	29	94
Mean number of prior arrests ***	2.28	3.70	3.83	551	203	337	1091
Juvenile Incarceration ***							
yes	38%	25%	38%	134	87	134	355
no	58%	16%	27%	405	111	188	704
Mean age at first arrest ***	18.7	17.0	17.0	490	187	308	985
Family member ever incarcerated							
yes	45%	20%	34%	258	116	194	568
no	56%	16%	27%	271	78	131	480
Friend ever incarcerated **							
yes	49%	20%	32%	437	175	284	896
no	61%	13%	26%	95	20	40	155

* Significant at .05 level

** Significant at .01 level

*** Significant at .001 level

Table 4 [cont.] Recidivism Rates For Boot Camp Offenders by Factors Included in Recidivism Study [N=1091]

	Percent of Offenders			Number of Offenders			TOTAL
	Success	Technical Violation	Arrest	Success	Technical Violation	Arrest	
SUBSTANCE ABUSE FACTORS							
Ever use drugs *							
yes	50%	19%	31%	463	182	290	935
no	61%	12%	27%	74	15	33	122
Mean age at first drug use **	15.1	14.4	14.5	457	178	282	917
Drug use frequency **							
never or less than daily	55%	16%	29%	290	84	151	525
daily	46%	20%	34%	246	107	178	531
Drinking day of crime							
yes	51%	22%	27%	118	52	63	233
no	50%	17%	32%	401	139	255	795
Drugs day of crime *							
yes	47%	21%	32%	231	104	161	496
no	54%	16%	30%	288	84	157	529
Urged to quit drugs/alch. by others *							
yes	48%	20%	32%	355	150	235	740
no	57%	15%	29%	137	35	69	241
Tried to quite Alcohol							
yes	46%	23%	31%	127	63	84	274
no	52%	17%	31%	334	109	202	645
Tried to quit Drugs *							
yes	47%	22%	31%	268	123	175	566
no	52%	15%	33%	198	58	125	381
Fear of being addict *							
yes	47%	25%	28%	155	82	94	331
no	52%	15%	33%	354	105	225	684
Fear of being alcoholic							
yes	44%	26%	30%	54	32	36	122
no	51%	18%	31%	461	159	282	902

* Significant at .05 level

** Significant at .01 level

*** Significant at .001 level

going to school and working [62%] than if they were unemployed and looking for work [44%] or unemployed and not looking for work [36%]. Unemployed offenders had higher rates of technical violations and new arrests compared to those who were employed or going to school. While this finding was strong regarding both pre and post Boot Camp employment status, it should be noted that the employment status on parole was missing for 50% of the offenders and thus, that finding should be taken with caution. In addition to employment status, offenders who had been employed longest in their job prior to Boot Camp were also least likely to recidivate.

Criminal Justice Factors. In examining factors related to criminal activity, we found that there was a significant relationship between recidivism and the number of prior arrests, current offense type, age at first arrest, prior incarceration as a juvenile, having a friend previously incarcerated, and having a family member previously incarcerated. Offenders who were re-arrested had the highest mean number of prior arrests [3.83] whereas those who were successful had the lowest [2.28]. Offenders who had been institutionalized as juveniles were much more likely than those who had not been institutionalized to have either an arrest [38% vs. 27%] or technical violation [25% vs. 16%]. Overall, offenders convicted of personal crimes were most successful [56%], followed by those convicted of drug offenses [52%], property [45%] and other types of crimes [41%]. Offenders whose current conviction was for a drug offense were more likely to have a new arrest [32%], compared to those convicted of a personal [28%], property [21%] or other type of crime [31%]. Those convicted of property offenses were most likely to have a technical

violation [34%] compared to offenders convicted of drug offenses [16%], personal [16%] or other types of offenses [28%]. Offenders who reported that a family member had previously been incarcerated were more likely than those who did not to either be arrested [34% vs. 27%] or have a technical violation [20% vs. 16%]. Additionally, those who responded that they had a friend who had been previously incarcerated were also more likely than those who did not to either be arrested [32% vs. 26%] or have a technical violation [20% vs. 13%].

Substance abuse factors. On the Self Report Survey, we ask offenders several questions concerning their use of drugs and alcohol prior to attending Boot Camp. Overall, offenders who indicate that they have a problem with substance abuse are more likely to recidivate than those who do not indicate having a problem. Table 4 shows that offenders who started using drugs at an earlier age were more likely to have new arrests and technical violations than those who started using drugs at an older age. Offenders who used drugs daily were more likely than those who used drugs less frequently to have new arrests [34% vs. 29%] and technical violations [20% vs. 16%]. Offenders who had a fear of being a drug addict were more likely than those who did not have a fear of being a drug addict to have a technical violation [25% vs. 15%] though less likely to have a new arrest [28% vs. 33%]. Further, offenders who indicated that they had problems with alcohol were more likely than those who indicated that they did not have problems with alcohol to have technical violations and less likely to have a new arrest. Though this finding was not significant, it did approach significance.

Scales. In the previous section we discussed four areas in which offenders reported changes after attending the Boot Camp Program: a decrease in impulsivity, an increase in decision-making skills, having less of a problem with drugs, and associating less with ‘friends-in-trouble’. Thus, we were interested in knowing whether offenders who indicated that they had made these changes in their lives were also less likely to recidivate.¹² In addition, we examined the impact of other offender characteristics that were measured through scales we used on the Offender Survey, even though there were not significant changes in these characteristics among Boot Camp Graduates. Specifically, we used the scales that measured temper, the ability to complete difficult tasks [both sub-scales of the Self-Control Scale], and the Family Warmth Scale. We also looked at whether the ‘Offenders’ Expectations’ of Boot Camp was related to their likelihood of committing future crime.

Table 5 shows the mean scores for those scales that were significantly related to recidivism. The findings indicate that those offenders who had better decision-making skills, had less difficulty completing difficult tasks, reported higher levels of family warmth, and were less likely to associate with delinquent friends were less likely to recidivate with respect to both technical violations and new arrests.¹³ Offenders who expressed lower expectations of the Boot Camp and indicated that they had a problem controlling their temper were more likely to be arrested, while those who indicated that they had a greater need for help with their drug problem were more

¹² After conducting the factor analysis and reliability analysis on the scales, we decided to not include the impulsivity scale as it had low reliability [$\alpha=.492$] for our sample.

¹³ The ‘Family Warmth’ scale and ‘Friends-in-Trouble’ scales were used on the admission and parole stages, but not the graduation stage. As about 50% of the offenders do not respond to the survey at the parole stage, we used the responses to these scale questions at the admission stage.

likely to have a technical violation.

Table 5. Mean Scores on Scales by Type of Recidivism

<i>SCALES</i>	Success	Technical Violation	New Arrest	Number
Expectations of Boot Camp *** mean score at admission [range=8-40]	34.3	<u>34.4</u>	33.4	1043
Temper *** mean score at graduation [range=4-20]	9.3	<u>9.6</u>	10.4	1031
Decision-making** mean score at graduation [range=8-40]	31.5	30.6	30.7	1015
Completing Tasks *** mean score at graduation [range=3-15]	6.0	6.4	6.6	1034
Help with Drugs*** mean score at graduation [range=6-30]	15.5	<u>17.9</u>	15.5	948
Family Warmth ** mean score at admission [range=8-40]	34.3	32.8	33.0	1038
Friends-in-Trouble *** mean score at admission [range=7-35]	17.3	18.6	18.7	1025

* Significant at .05 level ** Significant at .01 level *** Significant at .001 level

Bold Italics indicates significant from the success.

Underline indicates significant between technical violation and arrest.

Multivariate Results: Best predictors of recidivism. In the bivariate analyses just discussed, it is difficult to determine which factors are the best predictors of recidivism, as the analysis only considers the factors individually, not simultaneously. Thus, we next conducted a multivariate analysis to examine the net effect of each of the variables on recidivism while controlling for the influence of the other variables. In conducting the analysis, we included those variables found to be significant at the bivariate level and those for which there were group differences. Variables that had a high rate of missing information or were highly correlated with other variables were removed from the final analysis.

Table 6 provides the findings from the multivariate analysis that presents the ‘best fit’ of predictor variables. A caveat to the findings is that the model only considers cases in which the information was available for all variables considered in the model, and that 255 cases [23%] were removed due to missing information on one or more of the variables.¹⁴

The multivariate analysis shows that the best predictors of both technical violations and new arrests were age at first arrest and the number of prior arrests. Those offenders who were younger at the age of first arrest and had more prior arrests were more likely to recidivate using both measures of recidivism. Additionally those factors that only predict technical violations are

¹⁴ As our missing values analysis indicated no difference between offenders who were missing and not missing ‘age at first arrest’, we replaced missing cases with the mean, which is an accepted method that allows for inclusion of more cases.

type of offense and score on the Drug Help Scale. Those offenders convicted of a non-drug crime and those who indicated a stronger need for help with their drug problem were more likely to have technical violations. While offenders who were unemployed and those who had less than a High School education were also more likely to get technical violations, this finding was below the accepted standard for being statistically significant, though worthy of some attention [.084 and .070 respectively]. Those factors that only predict new arrests are race, employment status, and their scores on the Temper Scale and Task Scale. Offenders who were non white, not employed or going to school, indicated that they had a problem with their temper, and didn't like complicated tasks were more likely to be arrested after Boot Camp.

Table 6. Predictors of Recidivism

Variable	Technical Violation		New Arrest	
	Logit Coefficient	Odds of Technical Violation	Logit Coefficient	Odds of Re-arrest
Aftercare Group [compared to no aftercare group]				
90 day aftercare	0.199	1.22	-0.201	0.818
30 day aftercare	-0.011	0.989	-0.183	0.833
Race				
Non-white	0.176	1.192	.876***	2.401
Conviction Offense				
Non-drug	0.493*	1.637	0.201	1.222
Number of Prior Arrests	0.148***	1.159	0.175 ***	1.191
Age at First Arrest	-.055*	0.946	-0.090 ***	0.914
Employment Status				
Unemployed prior to Boot Camp	0.363	1.438	0.416*	1.517
Education [compared to 'more than High School']				
Less than High School	0.455	1.576	-0.258	0.773
Finished High School	0.288	1.334	0.213	1.237
HELP [with drugs] Scale [scale range 7-35]	0.068***	1.07	-0.006	0.994
TEMPER Scale [scale range 4-20]	0.01	1.01	0.105 ***	1.11
TASK Scale [scale range 3-15]	0.028	1.028	0.102 *	1.108

* Significant at .05 level ** Significant at .01 level *** Significant at .001 level

We conducted the analysis with and without controlling for the Aftercare Group variable and found that whether the offender was in a mandatory aftercare program or not did not impact recidivism. A more detailed description of the multivariate findings by each factor that was found to significantly predict recidivism is as follows:

Race. Non whites were 2.4 times more likely than whites to be re-arrested. Race was not a predictor of technical violations.

Offense. The odds of receiving a technical violation increase by 64% for offenders with a non drug conviction compared to those with a drug conviction. [Further analysis indicated this is true for property and other types of crime but not for personal crimes.] Offense type was not a predictor of a new arrest.

Age at First Arrest. For age at first arrest, for each year increase in age there is a 5% decrease in the odds of getting a technical violation and a 9% decrease in the odds of a new arrest. For example, for offenders who were 18 years of age at first arrest there is a 16% increase in the odds of getting a technical violation and a 24% increase in the odds of getting a new arrest, compared to someone who was age 21 at first arrest.

Prior Arrests. For each prior arrest the odds of getting a technical violation increase by 16% and the odds of getting a new arrest increase by 19%. For example, the likelihood of an offender with 3 prior arrests getting a technical violation is 34% greater than an offender with 1 prior arrest; the likelihood of getting a new arrest is 42% greater.

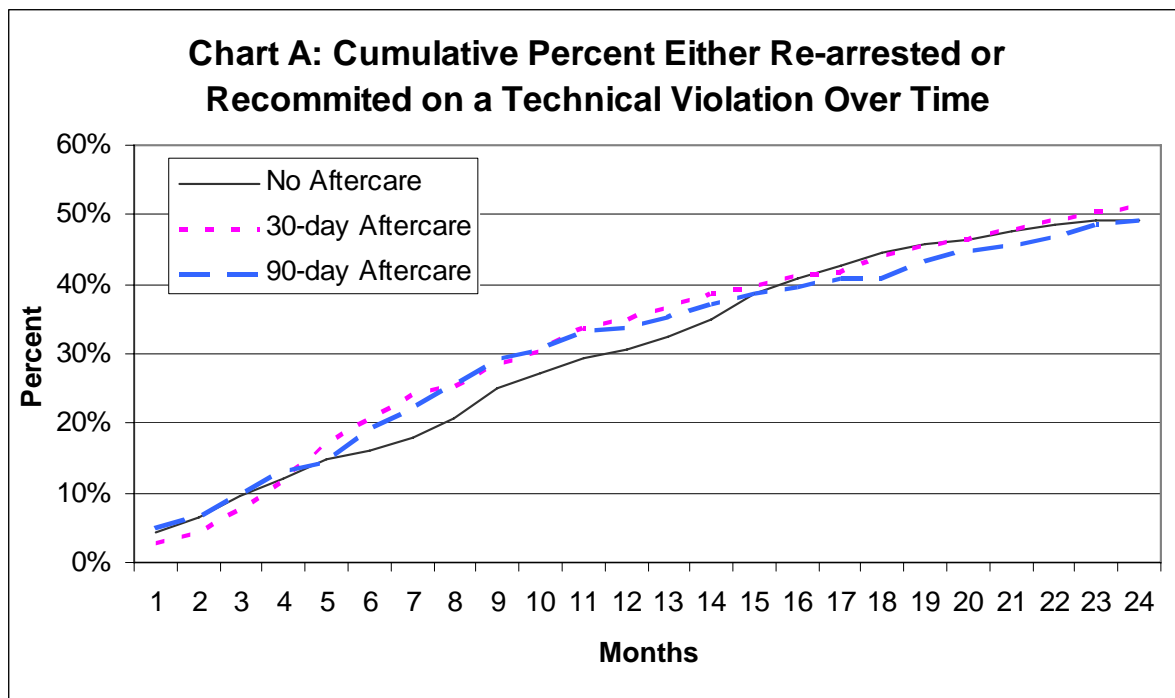
Employment. The odds of unemployed offenders getting a new arrest increase by 52% compared to those who are employed or in school. The odds of unemployed offenders having a technical violation increase by 42% compared to those who are employed or in school, though this finding did not reach the accepted .05 level of statistical significance [$p=.084$].

HELP [with drugs] Scale. For each one point increase in the HELP Scale, there is a 7% increase in the odds of receiving a technical violation. For example, compared to those who felt most strongly that they *did not* need help with their drug problem, those who felt most strongly that they *did* need help were 6.7 times more likely to receive a technical violation. [i.e., strongly disagreed with every item on the scale vs. strongly agreed with every item]. The HELP Scale was not a predictor of new arrests.

TEMPER Scale. For each point increase in the TEMPER scale there is an 11% increase in the odds of an arrest. For example, compared to offenders who felt they had the *least difficulty* with controlling their temper, those who felt they had the *most difficulty* controlling their temper were 5.4 times more likely to have an arrest. [i.e., strongly disagreed with every item on the scale vs. strongly agreed with every item]. The TEMPER Scale was not a predictor of technical violations.

TASK Scale. For each point increase in the TASK scale, there is 10% increase in the odds of an arrest. For example, compared to offenders who felt most strongly that they liked complicated tasks and tasks that maximized their abilities, those who felt most strongly that they disliked such tasks were 2.8 times more likely to have an arrest [e.g., strongly agreed with every item on the scale vs. strongly disagreed with every item on the scale]. The TASK Scale was not a predictor of technical violations.

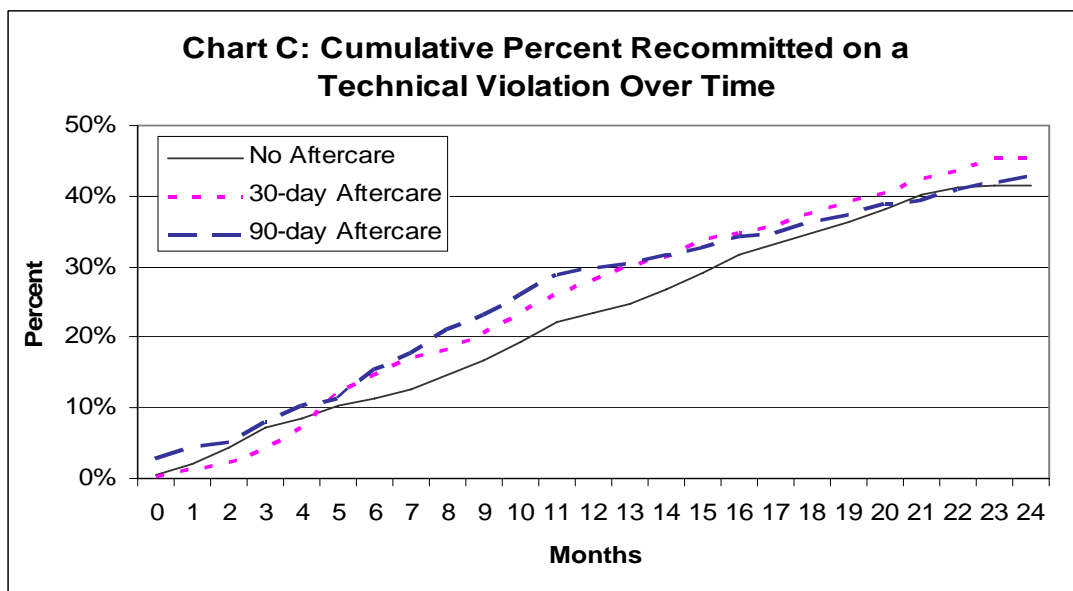
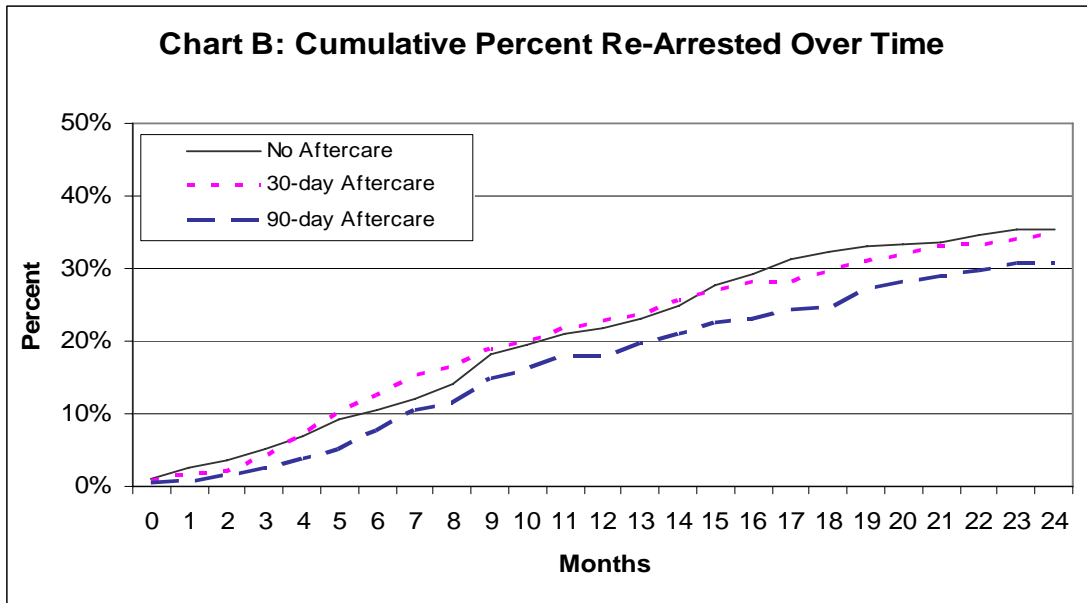
Recidivism Over time: Survival analysis. Although our findings indicate that aftercare did not have a significant impact on recidivism, we did conduct additional survival analyses that has the added benefit of not only looking at failure rates, but also examines changes in the failure rates over time and considers how long the offender ‘survives’ without being arrested or incarcerated due to a technical violation.¹⁵ In conducting this analysis a Life Table is produced that tracks recidivism rates for each group on a monthly basis [see Appendix E]. The three graphs below visually depict the cumulative recidivism rates based upon three ways of defining recidivism: 1) combining arrest and technical violations [Graph A], 2) looking at only new arrest as a measure of recidivism [Graph B],¹⁶ and 3) looking at technical violations as a measure of recidivism [Graph C]. Graph A shows that offenders in the aftercare groups had a slight tendency to recidivate earlier than those in the no aftercare group. This may be a result of offenders in the aftercare groups being supervised more closely than those with no aftercare.



¹⁵ This type of analysis originated in the medical field to determine the effect of different medical treatments over time, but has become popular in the correctional field for tracking recidivism outcomes for offenders receiving different types of correctional ‘treatment’.

¹⁶ This graph, which is based upon a Life Table looking at people who were arrested for a new crime, takes into account offenders who are removed from being ‘at risk’ for arrest because they are incarcerated for a technical parole violation. This measure of recidivism is comparable to that used for the 90-day aftercare study discussed in the *2004 Legislative Report*.

Looking more specifically at the type of recidivism, Chart B shows that offenders in the 90-day aftercare group are consistently less likely than offenders in the no aftercare group to be re-arrested, though this is not the case with offenders in the 30-day aftercare group. Chart C shows offenders in both the 30-day and 90-day aftercare groups are more likely to be recommitted on a technical violation than those in the no aftercare group. These charts basically substantiate our results from our earlier bivariate analysis in which we found that offenders receiving 90-days of aftercare had the highest rate of technical violations and offenders with no aftercare had the highest rate of arrests. This finding, however, was not statistically significant.¹⁷



¹⁷ We also conducted a proportional hazards regression analysis to control for the factors used in the multivariate analysis and found the findings to be consistent.

Summary and Conclusion

Since the inception of the Boot Camp Program in 1992 through 2005, there have been 5,177 offenders admitted into the program. Since 1992, there has been a gradual increase in the number of offenders participating in the program, with the peak year being 2003, during which 637 offenders were admitted. The typical offender was young, male, non-white, from an urban area, and convicted of a drug offense.

Responses from the Offender Self-Report Survey provide a more in-depth profile of offenders participating in the Boot Camp Program. While most offenders had never been married, most did have at least one child. The majority of offenders indicated that, prior to attending Boot Camp, they had completed high school, were employed, had a manual labor job, held their current job for over two years, and identified their job as their primary source of income. A sizable percentage, however, identified illegal sources as their primary means of support, and those offenders also reported higher monthly incomes. Offenders were slightly more likely to be raised in a two-parent household rather than a one-parent household. Both parents were more likely than the offender to have graduated from high school and attended college. The offender's exposure to crime was high; almost all of them had committed prior crimes, and the majority reported having been the victim of a crime. Additionally, most reported that a family member, as well as a friend, had been incarcerated at some point. The vast majority of offenders used drugs, primarily marijuana and cocaine, and over half used drugs the day they committed their 'Boot Camp' offense. While most offenders did not have a fear of being addicted to drugs, most also reported having previously made an attempt to quit.

Responses to the Boot Camp Evaluation Survey, which was given to offenders at admission, graduation, and parole, indicated that offenders had high expectations, which were not always met. It is noteworthy, however, that even when this was the case, the overwhelming majority still reported favorable opinions about the program at all three stages. The most significant attitudinal shifts occurred with respect to impulsiveness, decision-making and substance abuse. After going through Boot Camp, offenders were significantly more likely to respond that they were less impulsive, made better decisions, and that drugs presented less of a problem. All of these attitudinal shifts endured at the parole stage, six months after Boot Camp.

Offenders also reported positive behavioral changes as well. They were more likely to be employed and less likely to use drugs after Boot Camp than when they entered the program. In addition, they indicated that they had made new friends and were significantly less likely to associate with 'friends-in-trouble'. These behavioral shifts are encouraging, as previous research has found unemployment, substance abuse, and associating with problematic friends to be related to engaging in criminal activity.

In our recidivism study we examined whether offenders who received residential aftercare were less likely to recidivate than those offenders who did not receive aftercare. Our previous study examined the impact of the 90-day aftercare program and found that those offenders who received 90-days of aftercare were less likely than those offenders who did not receive aftercare to be re-arrested. However, since that study we received additional arrest information, as well as new information concerning those who were deceased, which impacted our original findings. While the findings were in the same general direction, they were no longer significant. In our current study, which examined the impact of both 90-days of mandatory aftercare and 30-days of

mandatory aftercare in relation to no mandatory aftercare, we found that aftercare did not lower recidivism. We not only looked at a new arrest as a measure of recidivism, but also return to prison due to a technical violation. While overall offenders receiving aftercare were more likely than those not receiving aftercare to have technical violations [particularly those in the 90-day program], and offenders who had no aftercare were more likely than those with aftercare to have new arrests, this finding was not significant.

Factors that did significantly predict whether an offender would recidivate were: race, current offense, number of prior arrests, and age at first arrest, employment status, drug problem recognition, difficulty controlling temper, and difficulty handling complex tasks. Consistent with other studies we found that offenders who were younger at their first arrest, and had a greater number of prior arrests, were more likely to receive technical violations and to be re-arrested for a new crime. This finding supports the need for early intervention efforts with children and juveniles.

Offenders who committed non drug offenses, particularly property offenders, were more likely to have technical violations though offense type did not impact re-arrest. As technical violations often involve substance abuse, it is likely that these offenders were committing property crime to support their habit. Non-white offenders were more likely than white offenders to get re-arrested, though race was not related to technical violations. While other studies have also found non white offenders to be more likely to recidivate, this is often explained by factors frequently correlated with being a minority, such as poverty, unemployment, and living in unstable environments. We do know that non white offenders in our study were significantly less likely than white offenders to be employed, to have a high school education, and to live with both parents as a child. While we were able to control for these specific factors and found race still to be a predictor, these results are suggestive that there are factors beyond those we have that are intertwined with race and may help explain the finding.

It is encouraging that some of the factors that we found to be most significantly related to recidivism are considered 'dynamic' factors, which can be addressed through program interventions. Offenders who felt strongest about needing help for their drug problem were also more likely to receive a technical violation, which suggests that continued substance abuse treatment might be necessary for those offenders. Offenders who felt strongest about having difficulty controlling their temper were more likely to be re-arrested, which suggests that continued anger management programs might be necessary for those offenders.

The finding that aftercare did not impact recidivism does not necessarily negate the need for aftercare programs. Rather, our findings do support the importance of targeting the specific needs of offenders upon return to the community, and recognizing that addressing these needs may not bring about quick or permanent results, but may require reinforcing over time.

Since the inception of the Motivational Boot Camp Program in 1992, another alternative prison program, State Intermediate Punishment, was established in 2005. Both of these programs were created to enhance public safety by offering offenders treatment programs oriented toward reducing their criminal behavior, while helping to ease the prison overcrowding problem. As the Commission is mandated to evaluate both of these programs, it is anticipated that future studies will address the issue of what type of program works best for what type of offender.

Appendix A

Characteristics of Offenders Admitted to Boot Camp by Year

Table 1a. Number of Offenders Admitted to Boot Camp by County [1992-2005]

COUNTY	1992		1993		1994		1995		1996		1997		1998	
	N	%	N	%	N	%	N	%	N	%	N	%	N	%
Adams	-		-		-		1	0.3%	3	1.0%	4	1.1%	2	0.5%
Allegheny	-		7	5.6%	19	10.3%	33	11.3%	32	11.0%	36	9.9%	46	12.3%
Armstrong	-		1	0.8%	-		-		-		-		2	0.5%
Beaver	-		1	0.8%	3	1.6%	4	1.4%	2	0.7%	6	1.6%	3	0.8%
Bedford	-		-		-		-		1	0.3%	-		-	
Berks	5	12.8%	18	14.4%	11	5.9%	7	2.4%	4	1.4%	7	1.9%	17	4.5%
Blair	-		-		-		1	0.3%	-		1	0.3%	-	
Bradford	1	2.6%	1	0.8%	1	0.5%	2	0.7%	1	0.3%	1	0.3%	-	
Bucks	-		-		-		-		-		2	0.5%	1	0.3%
Butler	-		-		2	1.1%	2	0.7%	-		1	0.3%	1	0.3%
Cambria	-		1	0.8%	1	0.5%	3	1.0%	1	0.3%	-		2	0.5%
Cameron	-		-		1	0.5%	-		1	0.3%	-		-	
Carbon	-		-		-		1	0.3%	2	0.7%	-		-	
Centre	1	2.6%	1	0.8%	-		-		3	1.0%	5	1.4%	4	1.1%
Chester	2	5.1%	3	2.4%	3	1.6%	13	4.5%	7	2.4%	7	1.9%	12	3.2%
Clarion	-		1	0.8%	2	1.1%	-		3	1.0%	1	0.3%	-	
Clearfield	-		-		1	0.5%	-		1	0.3%	2	0.5%	2	0.5%
Clinton	-		1	0.8%	1	0.5%	-		-		-		-	
Columbia	-		-		-		-		-		-		-	
Crawford	-		1	0.8%	2	1.1%	4	1.4%	3	1.0%	-		-	
Cumberland	-		-		3	1.6%	-		1	0.3%	2	0.5%	6	1.6%
Dauphin	5	12.8%	8	6.4%	11	5.9%	18	6.2%	19	6.6%	19	5.2%	16	4.3%
Delaware	-		7	5.6%	7	3.8%	20	6.8%	23	7.9%	34	9.3%	31	8.3%
Elk	-		-		1	0.5%	-		-		-		-	
Erie	-		2	1.6%	15	8.1%	16	5.5%	20	6.9%	28	7.7%	16	4.3%
Fayette	-		3	2.4%	3	1.6%	4	1.4%	3	1.0%	6	1.6%	10	2.7%
Forest	-		-		-		-		-		-		1	0.3%
Franklin	-		1	0.8%	2	1.1%	3	1.0%	6	2.1%	7	1.9%	1	0.3%
Fulton	-		1	0.8%	-		1	0.3%	-		2	0.5%	-	
Greene	1	2.6%	1	0.8%	-		4	1.4%	1	0.3%	1	0.3%	-	
Huntingdon	-		-		2	1.1%	-		-		1	0.3%	-	
Indiana	-		1	0.8%	-		1	0.3%	2	0.7%	3	0.8%	1	0.3%
Jefferson	-		-		-		1	0.3%	-		4	1.1%	3	0.8%
Juniata	-		-		-		-		-		-		-	
Lackawanna	-		-		-		3	1.0%	4	1.4%	7	1.9%	2	0.5%
Lancaster	3	7.7%	2	1.6%	5	2.7%	6	2.1%	4	1.4%	11	3.0%	15	4.0%
Lawrence	-		-		-		-		-		-		-	
Lebanon	-		1	0.8%	1	0.5%	-		-		2	0.5%	1	0.3%
Lehigh	-		9	7.2%	3	1.6%	13	4.5%	19	6.6%	10	2.7%	15	4.0%
Luzerne	1	2.6%	-		1	0.5%	-		2	0.7%	4	1.1%	4	1.1%
Lycoming	2	5.1%	12	9.6%	15	8.1%	8	2.7%	7	2.4%	15	4.1%	9	2.4%
McKean	1	2.6%	-		2	1.1%	-		3	1.0%	-		-	
Mercer	1	2.6%	4	3.2%	-		-		5	1.7%	5	1.4%	8	2.1%
Mifflin	-		-		1	0.5%	-		1	0.3%	-		1	0.3%
Monroe	-		-		2	1.1%	-		-		1	0.3%	1	0.3%
Montgomery	5	12.8%	2	1.6%	7	3.8%	7	2.4%	6	2.1%	9	2.5%	5	1.3%
Montour	-		-		-		-		-		-		-	
Northhampton	-		1	0.8%	4	2.2%	2	0.7%	2	0.7%	2	0.5%	4	1.1%
Northumberland	-		1	0.8%	2	1.1%	2	0.7%	2	0.7%	2	0.5%	-	
Perry	1	2.6%	1	0.8%	1	0.5%	-		2	0.7%	4	1.1%	3	0.8%
Philadelphia	10	25.6%	22	17.6%	27	14.6%	79	27.1%	66	22.8%	68	18.6%	91	24.3%
Pike	-		-		-		1	0.3%	-		-		-	
Potter	-		1	0.8%	-		-		-		1	0.3%	-	
Schuylkill	-		-		-		-		-		1	0.3%	-	
Snyder	-		-		-		-		-		1	0.3%	1	0.3%
Somerset	-		-		3	1.6%	-		-		1	0.3%	2	0.5%
Sullivan	-		-		-		-		-		1	0.3%	-	
Susquehanna	-		-		-		-		-		-		-	
Tioga	-		2	1.6%	2	1.1%	2	0.7%	4	1.4%	3	0.8%	-	
Union	-		-		-		-		2	0.7%	-		2	0.5%
Venango	-		1	0.8%	1	0.5%	5	1.7%	6	2.1%	7	1.9%	7	1.9%
Warren	-		-		3	1.6%	3	1.0%	-		2	0.5%	4	1.1%
Washington	-		-		1	0.5%	-		1	0.3%	3	0.8%	4	1.1%
Wayne	-		-		2	1.1%	1	0.3%	-		2	0.5%	-	
Westmoreland	-		-		2	1.1%	2	0.7%	1	0.3%	5	1.4%	4	1.1%
Wyoming	-		1	0.8%	1	0.5%	-		1	0.3%	-		-	
York	-		5	4.0%	8	4.3%	19	6.5%	13	4.5%	18	4.9%	14	3.7%
TOTAL	39	100%	125	100%	185	100%	292	100%	290	100%	365	100%	374	100%

Table 1a [cont.]. Number of Offenders Admitted to Boot Camp by County [1992-2005]

COUNTY	1999		2000		2001		2002		2003		2004		2005		Total '92-'05	
	N	%	N	%	N	%	N	%	N	%	N	%	N	%	N	%
Adams	3	0.7%	3	0.6%	9	1.9%	5	1.0%	1	0.2%	-	-	3	0.7%	34	0.7%
Allegheny	44	10.4%	60	11.6%	58	12.3%	59	11.5%	56	8.8%	67	13.8%	70	1.5%	587	11.3%
Armstrong	1	0.2%	-	-	1	0.2%	-	-	1	0.2%	-	-	-	-	6	0.1%
Beaver	1	0.2%	2	0.4%	1	0.2%	1	0.2%	4	0.6%	3	0.6%	3	0.7%	34	0.7%
Bedford	-	-	-	-	-	-	-	-	1	0.2%	-	-	-	-	2	0.0%
Berks	14	3.3%	22	4.3%	49	10.4%	51	9.9%	67	10.5%	46	9.5%	47	10.2%	365	7.1%
Blair	-	-	-	-	1	0.2%	1	0.2%	-	-	4	0.8%	-	-	8	0.2%
Bradford	2	0.5%	2	0.4%	-	-	1	0.2%	-	-	-	-	-	-	12	0.2%
Bucks	2	0.5%	-	-	1	0.2%	2	0.4%	5	0.8%	5	1.0%	11	2.4%	29	0.6%
Butler	2	0.5%	1	0.2%	1	0.2%	5	1.0%	6	0.9%	4	0.8%	1	0.2%	26	0.5%
Cambria	5	1.2%	4	0.8%	1	0.2%	-	-	2	0.3%	1	0.2%	-	-	21	0.4%
Cameron	-	-	-	-	1	0.2%	-	-	-	-	-	-	-	-	3	0.1%
Carbon	-	-	1	0.2%	1	0.2%	4	0.8%	1	0.2%	2	0.4%	-	-	12	0.2%
Centre	7	1.7%	1	0.2%	3	0.6%	2	0.4%	10	1.6%	3	0.6%	6	1.3%	46	0.9%
Chester	7	1.7%	18	3.5%	14	3.0%	14	2.7%	17	2.7%	6	1.2%	10	2.2%	133	2.6%
Clarion	-	-	1	0.2%	1	0.2%	-	-	-	-	-	-	1	0.2%	10	0.2%
Clearfield	3	0.7%	2	0.4%	2	0.4%	2	0.4%	2	0.3%	-	-	3	0.7%	20	0.4%
Clinton	1	0.2%	-	-	-	-	2	0.4%	2	0.3%	-	-	3	0.7%	10	0.2%
Columbia	-	-	-	-	-	-	2	0.4%	-	-	-	-	1	0.2%	3	0.1%
Crawford	3	0.7%	1	0.2%	2	0.4%	2	0.4%	4	0.6%	2	0.4%	3	0.7%	27	0.5%
Cumberland	4	0.9%	5	1.0%	8	1.7%	3	0.6%	10	1.6%	4	0.8%	4	0.9%	50	1.0%
Dauphin	25	5.9%	29	5.6%	37	7.9%	42	8.2%	54	5.0%	32	6.6%	23	5.0%	338	6.5%
Delaware	32	7.6%	47	9.1%	29	4.9%	22	4.3%	29	4.6%	38	7.8%	15	3.3%	328	6.3%
Elk	1	0.2%	-	-	-	-	-	-	-	-	1	0.2%	-	-	3	0.1%
Erie	18	4.3%	20	3.9%	30	6.4%	24	4.7%	17	2.7%	10	2.1%	13	2.8%	229	4.4%
Fayette	5	1.2%	14	2.7%	6	1.3%	9	1.8%	5	0.8%	6	1.2%	4	0.9%	78	1.5%
Forest	1	0.2%	-	-	-	-	-	-	-	-	-	-	1	0.2%	3	0.1%
Franklin	5	1.2%	9	1.7%	1	0.2%	4	0.8%	7	1.1%	3	0.6%	1	0.2%	50	1.0%
Fulton	1	0.2%	-	-	3	0.6%	1	0.2%	2	0.3%	1	0.2%	-	-	12	0.2%
Greene	-	-	-	-	-	-	-	-	1	0.2%	-	-	2	0.4%	11	0.2%
Huntingdon	1	0.2%	2	0.4%	1	0.2%	-	-	2	0.3%	-	-	1	0.2%	10	0.2%
Indiana	3	0.7%	2	0.4%	3	0.6%	3	0.6%	4	0.6%	3	0.6%	2	0.4%	28	0.5%
Jefferson	2	0.5%	2	0.4%	-	-	-	-	4	0.6%	6	1.2%	3	0.7%	25	0.5%
Juniata	-	-	-	-	-	-	-	-	1	0.2%	-	-	1	0.2%	2	0.0%
Lackawanna	7	1.7%	1	0.2%	-	-	3	0.6%	6	0.9%	7	1.4%	7	1.5%	47	0.9%
Lancaster	6	1.4%	13	2.5%	5	1.1%	7	1.4%	13	2.0%	21	4.3%	16	3.5%	127	2.5%
Lawrence	1	0.2%	2	0.4%	-	-	-	-	1	0.2%	-	-	-	-	4	0.1%
Lebanon	-	-	-	-	1	0.2%	-	-	1	0.2%	-	-	1	0.2%	8	0.2%
Lehigh	11	2.6%	13	2.5%	3	0.6%	9	1.8%	2	0.3%	5	1.0%	5	1.1%	117	2.3%
Luzerne	2	0.5%	5	1.0%	5	1.1%	2	0.4%	8	1.3%	6	1.2%	7	1.5%	47	0.9%
Lycoming	17	4.0%	6	1.2%	9	1.9%	8	1.6%	10	1.6%	9	1.9%	10	2.2%	137	2.6%
McKean	2	0.5%	2	0.4%	2	0.4%	1	0.2%	2	0.3%	1	0.2%	1	0.2%	17	0.3%
Mercer	8	1.9%	15	2.9%	5	1.1%	3	0.6%	6	0.9%	-	-	2	0.4%	62	1.2%
Mifflin	2	0.5%	-	-	2	0.4%	-	-	1	0.2%	2	0.4%	-	-	10	0.2%
Monroe	-	-	2	0.4%	-	-	4	0.8%	3	0.5%	1	0.2%	2	0.4%	16	0.3%
Montgomery	19	4.5%	20	3.9%	11	2.3%	11	2.1%	19	3.0%	12	2.5%	17	3.7%	150	2.9%
Montour	3	0.7%	-	-	-	-	1	0.2%	1	0.2%	-	-	-	-	5	0.1%
Northampton	2	0.5%	4	0.8%	4	0.9%	6	1.2%	12	1.9%	14	2.9%	21	4.6%	78	1.5%
Northumberland	3	0.7%	4	0.8%	4	0.9%	9	1.8%	4	0.6%	6	1.2%	5	1.1%	44	0.8%
Perry	-	-	-	-	4	0.9%	1	0.2%	1	0.2%	-	-	3	0.7%	21	0.4%
Philadelphia	106	25.1%	135	26.2%	118	25.1%	137	26.7%	156	24.5%	116	23.9%	78	16.9%	1209	23.4%
Pike	1	0.2%	1	0.2%	4	0.9%	-	-	-	-	-	-	-	-	7	0.1%
Potter	-	-	-	-	-	-	1	0.2%	2	0.3%	-	-	-	-	5	0.1%
Schuylkill	1	0.2%	1	0.2%	-	-	2	0.4%	1	0.2%	1	0.2%	3	0.7%	10	0.2%
Snyder	-	-	-	-	-	-	-	-	1	0.2%	-	-	-	-	3	0.1%
Somerset	1	0.2%	3	0.6%	-	-	2	0.4%	4	0.6%	1	0.2%	-	-	17	0.3%
Sullivan	-	-	-	-	-	-	1	0.2%	1	0.2%	-	-	-	-	3	0.1%
Susquehanna	-	-	-	-	-	-	-	-	1	0.2%	-	-	-	-	1	0.0%
Tioga	-	-	-	-	2	0.4%	1	0.2%	2	0.3%	2	0.4%	1	0.2%	21	0.4%
Union	1	0.2%	3	0.6%	1	0.2%	3	0.6%	1	0.2%	2	0.4%	4	0.9%	19	0.4%
Venango	4	0.9%	3	0.6%	3	0.6%	2	0.4%	4	0.6%	3	0.6%	10	2.2%	56	1.1%
Warren	-	-	1	0.2%	1	0.2%	1	0.2%	2	0.3%	3	0.6%	-	-	20	0.4%
Washington	-	-	2	0.4%	2	0.4%	1	0.2%	5	0.8%	1	0.2%	-	-	20	0.4%
Wayne	3	0.7%	2	0.4%	-	-	-	-	3	0.5%	3	0.6%	1	0.2%	17	0.3%
Westmoreland	5	1.2%	6	1.2%	2	0.4%	7	1.4%	11	1.7%	6	1.2%	7	1.5%	58	1.1%
Wyoming	1	0.2%	-	-	2	0.4%	2	0.4%	-	-	1	0.2%	-	-	9	0.2%
York	24	5.7%	24	4.7%	23	4.9%	27	5.3%	38	6.0%	16	3.3%	28	6.1%	257	5.0%
TOTAL	423	100%	516	100%	471	100%	513	100%	637	100%	486	100%	461	100%	5177	100%

Table 2a. Number of Offenders Admitted to Boot Camp by DOC by Race/Ethnicity and Year

RACE/ ETHNICITY	1992		1993		1994		1995		1996		1997		1998		1999	
	N	%	N	%	N	%	N	%	N	%	N	%	N	%	N	%
White	19	49%	49	39%	78	42%	91	31%	106	37%	137	38%	121	32%	155	37%
Black	15	38%	53	42%	97	52%	174	60%	151	52%	190	52%	201	54%	213	50%
Hispanic	5	13%	23	18%	10	5%	27	9%	33	11%	38	10%	52	14%	54	13%
Other	0	0%	0	0%	0	0%	0	0%	0	0%	0	0%	0	0%	1	0%
TOTAL	39	100%	125	100%	185	100%	292	100%	290	100%	365	100%	374	100%	423	100%

Table 3a. Number of Offenders Admitted to Boot Camp by DOC by Gender and Year

GENDER	1992		1993		1994		1995		1996		1997		1998		1999	
	N	%	N	%	N	%	N	%	N	%	N	%	N	%	N	%
Male	37	95%	120	96%	173	94%	279	96%	281	97%	356	98%	364	97%	404	96%
Female	2	5%	5	4%	12	6%	13	4%	9	3%	9	2%	10	3%	19	4%
TOTAL	39	100%	125	100%	185	100%	292	100%	290	100%	365	100%	374	100%	423	100%

Table 4a. Number of Offenders Admitted to Boot Camp by DOC by Age and Year

AGE	1992		1993		1994		1995		1996		1997		1998		1999	
	N	%	N	%	N	%	N	%	N	%	N	%	N	%	N	%
under 18	1	3%	1	1%	0	0%	2	1%	4	2%	1	0%	0	0%	0	0%
18-21	14	36%	36	29%	66	37%	86	31%	90	35%	102	28%	78	21%	42	10%
22-25	14	36%	37	30%	55	31%	91	33%	73	29%	132	37%	135	37%	166	39%
26-29	8	21%	26	21%	36	20%	58	21%	52	20%	73	20%	83	23%	114	27%
over 29	2	5%	24	19%	20	11%	39	14%	37	14%	50	14%	70	19%	101	24%
TOTAL	39	100%	124	100%	177	100%	276	100%	256	100%	358	100%	366	100%	423	100%

missing age

[1]

[8]

[16]

[34]

[7]

Table 5a. Number of Offenders Admitted into Boot Camp by Offense and Year

OFFENSE	1992		1993		1994		1995		1996		1997		1998		1999	
	N	%	N	%	N	%	N	%	N	%	N	%	N	%	N	%
Agg. Assault	3	8%	0	0%	7	4%	11	4%	8	3%	14	4%	10	3%	14	3%
Simple Assault	2	5%	0	0%	0	0%	1	0%	3	1%	4	1%	4	1%	5	1%
Burglary	5	13%	13	10%	30	17%	25	9%	30	12%	40	11%	36	10%	33	8%
Drug-felony	22	56%	77	62%	99	57%	174	66%	145	58%	205	56%	236	63%	265	63%
Drug-misd.	0	0%	0	0%	0	0%	0	0%	0	0%	0	0%	0	0%	2	0%
Robbery	0	0%	3	2%	2	1%	8	3%	9	4%	12	3%	9	2%	19	4%
Theft	6	15%	16	13%	25	14%	19	7%	24	10%	23	6%	32	9%	33	8%
Weapon	0	0%	0	0%	0	0%	1	0%	5	2%	2	1%	4	1%	9	2%
Other	1	3%	15	12%	11	6%	26	10%	26	10%	65	18%	43	11%	31	7%
DUI/Vehic. Hom	-	-	-	-	-	-	-	-	-	-	-	-	-	-	12	3%
TOTAL	39	100%	124	100%	174	100%	265	100%	250	100%	365	100%	374	100%	423	100%

missing offense information

[1]

[11]

[27]

[40]

Table 2a. Number of Offenders Admitted to Boot Camp by DOC by Race/Ethnicity and Year

RACE/ ETHNICITY	2000		2001		2002		2003		2004		2005		Total '92-'05	
	N	%	N	%	N	%	N	%	N	%	N	%	N	%
White	146	28%	154	33%	154	30%	207	32%	163	34%	165	36%	1,745	34%
Black	298	58%	235	50%	256	50%	327	51%	230	47%	218	47%	2,658	51%
Hispanic	71	14%	82	17%	102	20%	97	15%	91	19%	75	16%	760	15%
Other	1	0%	0	0%	1	0%	6	1%	2	0%	3	0%	14	0%
TOTAL	516	100%	471	100%	513	100%	637	100%	486	100%	461	100%	5,177	100%

Table 3a. Number of Offenders Admitted to Boot Camp by DOC by Gender and Year

GENDER	2000		2001		2002		2003		2004		2005		Total '92-'05	
	N	%	N	%	N	%	N	%	N	%	N	%	N	%
Male	500	97%	449	95%	496	97%	618	97%	472	97%	446	97%	4,995	96%
Female	16	3%	22	5%	17	3%	19	3%	14	3%	15	3%	182	4%
TOTAL	516	100%	471	100%	513	100%	637	100%	486	100%	461	100%	5,177	100%

Table 4a. Number of Offenders Admitted to Boot Camp by DOC by Age and Year

AGE	2000		2001		2002		2003		2004		2005		Total '92-'05	
	N	%	N	%	N	%	N	%	N	%	N	%	N	%
under 18	0	0%	4	1%	4	1%	2	0%	0	0%	0	0%	19	0%
18-21	132	26%	137	29%	130	25%	169	27%	142	29%	104	23%	1,328	26%
22-25	195	38%	170	36%	202	39%	218	34%	171	35%	149	32%	1,808	36%
26-29	96	19%	96	20%	104	20%	145	23%	104	21%	127	28%	1,122	22%
over 29	86	17%	64	14%	73	14%	100	16%	68	14%	81	18%	815	16%
TOTAL	509	100%	471	100%	513	100%	634	100%	485	100%	461	100%	5,092	100%

[7]

[3]

[1]

[85]

Table 5a. Number of Offenders Admitted into Boot Camp by Offense and Year

OFFENSE	2000		2001		2002		2003		2004		2005		Total '92-'05	
	N	%	N	%	N	%	N	%	N	%	N	%	N	%
Agg. Assault	20	4%	21	4%	28	5%	19	3%	15	3%	8	2%	178	3%
Simple Assault	7	1%	3	1%	6	1%	6	1%	1	0%	2	0%	44	1%
Burglary	29	6%	21	4%	33	6%	31	5%	21	4%	16	3%	363	7%
Drug-felony	357	69%	324	69%	346	67%	454	71%	355	73%	338	73%	3397	67%
Drug-misd.	3	1%	0	0%	4	1%	5	1%	1	0%	4	1%	19	0%
Robbery	14	3%	19	4%	16	3%	21	3%	11	2%	9	2%	152	3%
Theft	36	7%	34	7%	26	5%	35	5%	21	4%	22	5%	352	7%
Weapon	9	2%	4	1%	14	3%	16	3%	13	3%	16	3%	93	2%
Other	35	7%	41	9%	28	5%	41	6%	41	8%	36	8%	440	9%
DUI/Vehic. Hom	6	1%	4	1%	12	2%	9	1%	7	1%	10	2%	60	1%
TOTAL	516	100%	471	100%	513	100%	637	100%	486	100%	461	100%	5098	100%

missing offense information

[79]

Appendix B

Responses from the Self-Report Survey: Admission Stage

Responses from Self-Report Survey at Admission [N=832]

I. DEMOGRAPHIC CHARACTERISTICS

Variable	Number	Percent
Gender		
Male	799	96.0%
Female	33	4.0%
Total	832	100.0%
Race		
White	302	36.3%
Black	376	45.2%
Hispanic	148	17.8%
Asian	3	0.4%
Native American	3	0.4%
Total	832	100.0%
Age		
<22	199	24.2%
22-25	300	36.5%
26-29	175	21.3%
30-35	147	17.9%
Total	821	100.0%
Missing	11	
Mean age = 25		
Religion		
Catholic	200	24.3%
Protestant	442	53.8%
Muslim	89	10.8%
Jewish	2	0.2%
None	55	6.7%
Other	34	4.1%
Total	822	100.0%
Missing	10	
Religiosity		
Not at all	121	15.2%
Somewhat strongly	364	45.7%
Very strongly	229	28.7%
Not Applicable	83	10.4%
Total	797	100.0%
Missing	35	
Marital Status		
Married	90	10.9%
Widowed	5	0.6%
Common-Law	85	10.3%
Divorced	26	3.2%
Legally Separated	6	0.7%
Never Married	611	74.2%
Total	823	100.0%
Missing	9	

Responses from Self-Report Survey at Admission [N=832]

	Number	Percent
Living Arrangement Prior to Arrest		
Alone	98	11.9%
Spouse or Partner	395	47.9%
Mother and Father	72	8.7%
Mother only	90	10.9%
Father only	19	2.3%
Friend	72	8.7%
Homeless	6	0.7%
Parent and Stepparent	12	1.5%
Other Family Member	43	5.2%
Other	17	2.1%
Total	824	100.0%
Missing	8	
Months at Residence		
Under 7	158	20.2%
7-12	180	23.0%
13-24	136	17.4%
25-59	122	15.6%
Over 59	185	23.7%
Total	781	100.0%
Missing	51	
Mean = 51		
Times Moved in Last 5 Years		
0	135	17.6%
1	140	18.3%
2-3	329	43.0%
4 or more	161	21.0%
Total	765	100.0%
Missing	67	
Mean = 3		
Number of Children		
0	284	35.9%
1	193	24.4%
2	154	19.4%
3	83	10.5%
4	47	5.9%
5	19	2.4%
6 or more	12	1.5%
Total	792	100.0%
Missing	40	
Children Living with you		
Yes	298	59.2%
No	205	40.8%
Total	503	100.0%
No Children	284	
Missing (number of children)	40	
Missing (children living with you)	5	

Responses from Self-Report Survey at Admission [N=832]

	Number	Percent
Military Experience		
Yes	22	2.7%
No	803	97.3%
Total	825	100.0%
Missing	7	

II. EDUCATION AND EMPLOYMENT

Offender's Education Level		
No School	3	0.4%
Eighth grade or less	38	4.7%
Some high school	336	41.4%
Completed high school	198	24.4%
Some college	112	13.8%
Trade/technical school	104	12.8%
Graduated college	21	2.6%
Total	812	100.0%
Missing	20	
Employment		
Full time	357	44.0%
Part time	91	11.2%
In school	29	3.6%
Working and in school	60	7.4%
Looking for work	140	17.3%
Unemployed, not looking	134	16.5%
Total	811	100.0%
Missing	21	
Type of Job		
Clerical/office	12	2.5%
Manager/professional	38	7.8%
Sales	21	4.3%
Trade	38	7.8%
Food service	60	12.3%
Landscape	14	2.9%
Mechanical	23	4.7%
Construction/labor	119	24.5%
Factory/warehouse	63	13.0%
Maintenance/janitorial	32	6.6%
Miscellaneous	66	13.6%
Total	486	100.0%
Not Employed or in school	303	
Missing (not employed or in school)	21	
Missing (type of job)	22	

Responses from Self-Report Survey at Admission [N=832]

	Number	Percent
Months Employed at Job Held Previous to Arrest		
Less than 7	121	25.9%
7-12	109	23.3%
13-24	101	21.6%
Over 24	136	29.1%
Total	467	100.0%
Not employed or in school	303	
Missing (not employed or in school)	21	
Missing (months employed)	42	
Mean = 25 months		
Income Month Before Arrest		
No income	24	3.1%
Under \$500	99	12.8%
\$500-\$999	134	17.3%
\$1,000-\$4,000	368	47.6%
Over \$4,000	148	19.1%
Total	773	100.0%
Missing	59	
Mean income=\$1,000 - \$1,199		
Mode = >\$4,000		
Major Source of Income		
Job	396	51.2%
Spouse/partner	3	0.4%
Parent	32	4.1%
Illegal sources	260	33.6%
Friends	10	1.3%
Other	73	9.4%
Total	774	100.0%
Missing	58	

III. FAMILY BACKGROUND

Mother's Education		
No school	10	1.3%
Eighth grade or less	28	3.8%
Some high school	131	17.6%
Completed high school	331	44.4%
Some college	65	8.7%
Trade/technical school	67	9.0%
Graduated college	114	15.3%
Total	746	100.0%
Missing	86	
Father's Education		
No school	13	1.9%
Eighth grade or less	40	5.8%
Some high school	134	19.5%
Completed high school	291	42.4%
Some college	92	13.4%
Trade/technical school	42	6.1%
Graduated college	75	10.9%
Total	687	100.0%
Missing	145	

Responses from Self-Report Survey at Admission [N=832]

	Number	Percent
Childhood Living Arrangements		
Mother and Father	364	44.2%
Mother only	281	34.1%
Father only	23	2.8%
Grandparents	40	4.9%
Parent and grandparents	45	5.5%
Parent and stepparent	28	3.4%
Other	42	5.1%
Total	823	100.0%
Missing	9	
Siblings		
Yes	776	97.4%
No	21	2.6%
Total	797	100.0%
Missing	35	
Number of Siblings		
0	21	2.6%
1	113	14.2%
2	174	21.8%
3	125	15.7%
4	99	12.4%
5	88	11.0%
6 or more	177	22.2%
Total	797	100.0%
Missing	35	

Responses from Self-Report Survey at Admission [N=832]

IV. INVOLVEMENT WITH CRIME

	Number	Percent
Family Member Ever in Jail		
Yes	420	52.6%
No	378	47.4%
Total	798	100.0%
Missing	34	
Friend in Jail Ever in Jail		
Yes	685	85.1%
No	120	14.9%
Total	805	100.0%
Missing	27	
Victim of a Crime		
Yes	423	52.9%
No	376	47.1%
Total	799	100.0%
Missing	33	
Victim of What Type of Crime		
Assault	104	27.1%
Robbery	152	39.6%
Burglary	31	8.1%
Theft	67	17.4%
Drugs	8	2.1%
DUI/Traffic	6	1.6%
Other	16	4.2%
Total	384	100.0%
Missing type of crime	39	
Missing crime victim	33	
Never a crime victim	376	
Current Offense		
Assault	50	6.4%
Robbery	25	3.2%
Burglary	43	5.5%
Theft	30	3.8%
Drugs	566	72.2%
Weapons	10	1.3%
DUI/Traffic	14	1.8%
Other	46	5.9%
Total	784	100.0%
Missing	48	

Responses from Self-Report Survey at Admission [N=832]

	Number	Percent
Type of Prior Offenses [check all that apply]		
Burglary	123	15.9%
Auto theft	114	14.8%
Other theft	132	17.1%
Robbery	81	10.5%
Arson	15	1.9%
Assault	189	24.5%
Drug use	391	50.6%
Drug dealing	515	66.7%
Vandalism	107	13.9%
Driving under the influence	258	33.4%
Public drunkenness	188	24.4%
Forgery	46	6.0%
Other	24	3.1%
Total Responding	772	
Missing	60	
Age at First Arrest		
Under 15	122	16.1%
15-17	237	31.3%
18-20	223	29.5%
Over 20	174	23.0%
Total	756	100.0%
Missing	76	
Mean = 18		
Incarcerated as Juvenile		
Yes	236	29.3%
No	570	70.7%
Total	806	100.0%
Missing	26	
Ever Used Drugs		
Yes	721	89.7%
No	83	10.3%
Total	804	100.0%
Missing	28	
Age at First Drug Use		
Under 12	73	10.4%
12-14	258	36.8%
15-17	261	37.2%
Over 17	109	15.5%
Total	701	100.0%
Missing (age of first drug use)	20	
Missing (ever used drugs)	28	
Never used drugs	83	
Mean = 15		

Responses from Self-Report Survey at Admission [N=832]

	Number	Percent
Type of Drugs Used		
Year Before Arrest		
[check all that apply]		
Cocaine	244	34.3%
Marijuana/hashish	611	85.9%
Methadone	28	3.9%
Amphetamines	56	7.9%
Methaqualone	14	2.0%
Barbiturates	94	13.2%
LSD	104	14.6%
PCP	74	10.4%
Heroin *	47	6.6%
Ecstasy *	32	4.5%
Other	61	8.6%
Total Responding	711	
Missing (drug type)	10	
Missing (ever used drugs)	28	
Never used drugs	83	
* number based on number of offenders reporting this drug in 'other' category. This has subsequently been added to the survey.		
Drug Source		
Street buy	334	56.1%
Friend	165	27.7%
Self	42	7.1%
Stolen	1	0.2%
Other	53	8.9%
Total	595	100.0%
Missing (drug source)	126	
Missing (ever used drugs)	28	
Never used drugs	83	
Drug Use Month Prior to Arrest		
Never	128	18.1%
Less than once a week	79	11.1%
Once a week	109	15.4%
Daily	393	55.4%
Total	709	100.0%
Missing (drug use prior month)	12	
Missing (ever used drugs)	28	
Never used drugs	83	

Responses from Self-Report Survey at Admission [N=832]

	Number	Percent
Frequency of Drug Use Year Before Arrest		
<i>Cocaine</i>		
Never	320	45.0%
Once a month	75	10.5%
3-4 times a month	65	9.0%
1-2 times a week	49	6.9%
Daily	55	7.7%
<i>Marijuana/hashish</i>		
Never	79	11.1%
Once a month	70	9.8%
3-4 times a month	75	10.5%
1-2 times a week	80	11.3%
Daily	386	54.3%
<i>Barbiturates</i>		
Never	427	60.1%
Once a month	20	2.8%
3-4 times a month	23	3.2%
1-2 times a week	28	3.9%
Daily	23	3.2%
<i>LSD</i>		
Never	419	58.9%
Once a month	67	9.4%
3-4 times a month	19	2.7%
1-2 times a week	14	2.0%
Daily	4	0.6%
<i>PCP</i>		
Never	447	62.9%
Once a month	34	4.8%
3-4 times a month	14	2.0%
1-2 times a week	10	1.4%
Daily	16	2.3%
Total	711	
Missing (drug type)	10	
Missing (ever used drugs)	28	
Never used drugs	83	
How Often Drank Year Before Arrest		
<i>Beer</i>		
Never	88	12.4%
Once a month	130	18.3%
3-4 times a month	148	20.8%
1-2 times a week	206	29.0%
Daily	139	19.5%
<i>Wine</i>		
Never	486	68.4%
Once a month	127	17.9%
3-4 times a month	56	7.9%
1-2 times a week	32	4.5%
Daily	10	1.4%

Responses from Self-Report Survey at Admission [N=832]

	Number	Percent
<i>Liquor</i>		
Never	131	18.4%
Once a month	168	23.6%
3-4 times a month	158	22.2%
1-2 times a week	186	26.2%
Daily	68	9.6%
Total	711	
Missing (beer, wine, liquor)	30	
Never drank beer, wine, liquor	91	
Drinking Day of Crime		
Yes	176	25.0%
No	528	75.0%
Total	704	100.0%
Missing (drinking day of crime)	7	
Missing (beer, wine, liquor)	30	
Never drank beer, wine, liquor	91	
Using Drugs Day of Crime		
Yes	357	51.0%
No	343	49.0%
Total	700	100.0%
Missing (use drugs day of crime)	21	
Missing (ever used drugs)	28	
Never used drugs	83	
Tried to Quit Alcohol		
Yes	218	32.1%
No	462	67.9%
Total	680	100.0%
Missing (tried to quit)	31	
Missing (beer, wine, liquor)	30	
Never drank beer, wine, liquor	91	
Ever Afraid of Being Drug Addict		
Yes	249	35.7%
No	448	64.3%
Total	697	100.0%
Missing (drug addict)	24	
Missing (ever used drugs)	28	
Never used drugs	83	
Tried to Quit Drugs		
Yes	409	60.8%
No	264	39.2%
Total	673	100.0%
Missing (tried to quit)	48	
Missing (ever used drugs)	28	
Never used drugs	83	

Responses from Self-Report Survey at Admission [N=832]

	Number	Percent
People Who Have Tried to Get Offender to Quit Drugs/Alcohol [check all that apply]		
Relative	433	57.0%
Friend	226	29.8%
Spouse/partner	320	42.2%
Doctor	35	4.6%
People at work	48	6.3%
Other	48	6.3%
Total responding	759	
Missing (people who have tried)	53	
Never used drugs or alcohol	20	
Ever Afraid of Being an Alcoholic		
Yes	104	14.8%
No	600	85.2%
Total	704	100.0%
Missing (alcoholic)	7	
Missing (beer, wine, liquor)	30	
Never drank beer, wine, liquor	91	
Drinking Behavior		
Alone	49	8.7%
With others	515	91.3%
Total	564	100.0%
Missing	147	
Missing (beer, wine, liquor)	30	
Never drank beer, wine, liquor	91	
Feeling at Arrest		
Very drunk	40	8.1%
Pretty drunk	25	5.1%
High	191	38.7%
Messed up	59	11.9%
Sober	90	18.2%
Feeling good	89	18.0%
Total	494	100.0%
Missing	338	

Appendix C

Responses from the Self-Report Survey: Parole Stage

Responses from Self-Report Survey at Parole [N=832]

I. DEMOGRAPHIC CHARACTERISTICS

Variable	Number	Percent
County		
Adams	6	0.9%
Allegheny	113	16.1%
Beaver	2	0.3%
Bedford	1	0.1%
Berks	64	9.1%
Blair	2	0.3%
Bucks	1	0.1%
Butler	3	0.4%
Cambria	5	0.7%
Cameron	1	0.1%
Centre	3	0.4%
Chester	17	2.4%
Clearfield	4	0.6%
Clinton	1	0.1%
Crawford	3	0.4%
Cumberland	6	0.9%
Dauphin	65	9.2%
Delaware	29	4.1%
Erie	25	3.6%
Fayette	14	2.0%
Franklin	4	0.6%
Fulton	5	0.7%
Greene	1	0.1%
Huntington	1	0.1%
Indiana	4	0.6%
Lackawanna	2	0.3%
Lancaster	19	2.7%
Lebanon	4	0.6%
Lehigh	9	1.3%
Luzerne	3	0.4%
Lycoming	12	1.7%
McKean	3	0.4%
Mercer	5	0.7%
Mifflin	2	0.3%
Monroe	3	0.4%
Montgomery	8	1.1%
Montour	2	0.3%
Northampton	2	0.3%
Northumberland	4	0.6%
Perry	1	0.1%
Philadelphia	124	17.6%
Potter	2	0.3%
Schuylkill	1	0.1%
Somerset	2	0.3%
Union	3	0.4%
Venango	3	0.4%
Warren	2	0.3%
Washington	4	0.6%
Wayne	1	0.1%
Westmoreland	19	2.7%
York	55	7.8%
Out of state	28	4.0%
Total	703	100.0%
Missing	129	

Responses from Self-Report Survey at Parole [N=832]

	Number	Percent
Marital Status		
Married	100	12.2%
Widowed	1	0.1%
Common-Law	27	3.3%
Divorced	33	4.0%
Legally separated	11	1.3%
Never married/not in relationship	234	28.5%
Never married/in relationship	414	50.5%
Total	820	100.0%
Missing	12	
Satisfaction with Relationship		
Very happy	369	72.1%
Somewhat happy	105	20.5%
Unsure	24	4.7%
Somewhat unhappy	5	1.0%
Very unhappy	9	1.8%
Total	512	100.0%
Not in a relationship	279	
Missing in a relationship	12	
Missing satisfaction with relationship	29	
Living Arrangements on Parole		
Alone	102	12.5%
Spouse or partner	250	30.5%
Mother and father	130	15.9%
Mother only	130	15.9%
Father only	30	3.7%
Friend	29	3.5%
Homeless	2	0.2%
Other family member	96	11.7%
Parent and stepparent	10	1.2%
Other	40	4.9%
Total	819	100.0%
Missing	13	
Months at Residence		
Under 7	425	55.6%
7-12	210	27.5%
13-24	25	3.3%
25-59	27	3.5%
Over 59	78	10.2%
Total	765	100.0%
Missing	67	
Mean = 23		
Mode = 6		

Responses from Self-Report Survey at Parole [N=832]

	Number	Percent
Number of Children		
0	271	34.1%
1	189	23.8%
2	157	19.7%
3	98	12.3%
4	47	5.9%
5	23	2.9%
6 or more	10	1.3%
Total	795	100.0%
Missing	37	
Children Living with You		
Yes	212	41.0%
No	305	59.0%
Total	517	100.0%
Have no children	271	
Missing (have children)	37	
Missing (children living with you)	7	
Made New Friends		
Yes	628	76.2%
No	196	23.8%
Total	824	100.0%
Missing	8	
Hang Out with Old Friends		
Yes	147	18.0%
No	668	82.0%
Total	815	100.0%
Missing	17	

II. EDUCATION AND EMPLOYMENT

	Number	Percent
Offender's Education Level		
No School	10	1.2%
Eighth grade or less	30	3.7%
Some high school	276	33.7%
Completed high school	276	33.7%
Some college	132	16.1%
Trade/technical school	79	9.6%
Graduated college	17	2.1%
Total	820	100.0%
Missing	12	
Employment		
Full time	524	65.6%
Part time	86	10.8%
In school	23	2.9%
Working and in school	49	6.1%
Looking for work	97	12.1%
Unemployed, not looking	20	2.5%
Total	799	100.0%
Missing	33	

Responses from Self-Report Survey at Parole [N=832]

	Number	Percent
Type of Job		
Clerical/office	18	2.8%
Manager/professional	17	2.7%
Sales	37	5.8%
Trade	32	5.0%
Food service	98	15.4%
Landscape	14	2.2%
Mechanical	32	5.0%
Construction/labor	140	22.0%
Factory/warehouse	92	14.4%
Maintenance/janitorial	51	8.0%
Miscellaneous	106	16.6%
Total	637	100.0%
Not employed/ in school	140	
Missing (employed)	33	
Missing (type of job)	22	
Months Employed at Current Job		
Less than 7	434	70.5%
7-12	151	24.5%
13-24	12	1.9%
Over 24	19	3.1%
Total	616	100.0%
Not employed/ in school	140	
Missing (employed)	33	
Missing (months on job)	43	
Mean = 8		
Mode = 6		
Income During Last Month		
No income	55	7.6%
Under \$500	162	22.3%
\$500-\$999	232	31.9%
\$1,000-\$4,000	274	37.7%
Over \$4,000	4	0.6%
Total	727	100.0%
Missing	105	
Mean = \$700-\$799		
Mode = \$1,200-\$1,499		
Major Source of Income		
Job	621	80.0%
Spouse/partner	34	4.4%
Parent	53	6.8%
Illegal sources	0	0.0%
Other	68	8.8%
Total	776	100.0%
Missing	56	

Responses from Self-Report Survey at Parole [N=832]

	Number	Percent
Happy with Job		
Very happy	305	46.6%
Somewhat happy	216	33.0%
Unsure	80	12.2%
Somewhat unhappy	31	4.7%
Very unhappy	22	3.4%
Total	654	100.0%
Not employed/ In school	140	
Missing (employed)	33	
Missing (happy with job)	5	
Checking/savings account		
Yes	402	50.6%
No	392	49.4%
Total	794	100.0%
Missing	38	

IV. INVOLVEMENT WITH CRIME

Arrested for New Crime		
Yes	50	6.3%
No	742	93.7%
Total	792	100.0%
Missing	40	
If Arrested for New Crime- Type of Offense		
Assault	3	7.1%
Robbery	2	4.8%
Burglary	1	2.4%
Theft	3	7.1%
Drugs	14	33.3%
DUI/traffic	6	14.3%
Weapons	3	7.1%
Other	10	23.8%
Total	42	100.0%
No arrest for new crime	742	
Missing (arrest)	40	
Missing (type of crime)	8	
Technical Violation		
Yes	116	14.9%
No	664	85.1%
Total	780	100.0%
Missing	52	
Reason for Technical Violation		
Drug use	46	43.4%
Alcohol use	10	9.4%
Fleeing/failure to complete program	19	17.9%
Violation other condition of parole	28	26.4%
New charge	3	2.8%
Total	106	100.0%
No technical violation	664	
Missing (technical violation)	52	
Missing (reason for technical violation)	10	

Responses from Self-Report Survey at Parole [N=832]

V. INVOLVEMENT WITH DRUGS/ALCOHOL

	Number	Percent
Used Drugs since Boot Camp		
Yes	108	13.6%
No	687	86.4%
Total	795	100.0%
Missing	37	
Main Source of Drugs		
Street buy	43	43.0%
Friend	48	48.0%
Stolen	2	2.0%
Self	2	2.0%
Other	5	5.0%
Total	100	100.0%
Haven't used drugs since boot camp	687	
Missing (used drugs since boot camp)	37	
Missing (drug source)	8	
Type of Drug Used [check all that apply]		
Cocaine	43	42.2%
Marijuana/hashish	48	47.1%
Methadone	0	0.0%
Amphetamines	3	2.9%
Methaqualone	0	0.0%
Barbiturates	2	2.0%
LSD	2	2.0%
PCP	7	6.9%
Heroin	8	7.8%
Total responding	102	
Missing	6	
Not used drugs since boot camp	687	
Missing (used drugs since boot camp)	37	
Frequency of Drug Use since Boot Camp		
<i>Cocaine</i>		
Never	59	57.8%
Less than once a month	32	31.4%
3-4 times a month	5	4.9%
1-2 times a week	4	3.9%
Daily	2	2.0%
<i>Marijuana/hashish</i>		
Never	54	52.9%
Less than once a month	27	26.5%
3-4 times a month	10	9.8%
1-2 times a week	5	4.9%
Daily	6	5.9%

Responses from Self-Report Survey at Parole [N=832]

	Number	Percent
<i>Barbiturates</i>		
Never	100	98.0%
Less than once a month	1	1.0%
3-4 times a month	0	0.0%
1-2 times a week	1	1.0%
Daily	0	0.0%
<i>PCP</i>		
Never	95	93.1%
Less than once a month	3	2.9%
3-4 times a month	2	2.0%
1-2 times a week	2	2.0%
Daily	0	0.0%
<i>Herion</i>		
Never	94	92.2%
Less than once a month	2	2.0%
3-4 times a month	2	2.0%
1-2 times a week	2	2.0%
Daily	2	2.0%
Total	102	
Not used drugs since boot camp	687	
Missing (used drugs since boot camp)	37	
Missing (frequency of use)	6	
How Often Drank since Boot Camp		
<i>Beer</i>		
Never	16	3.6%
Once a month	72	16.0%
3-4 times a month	38	8.4%
1-2 times a week	12	2.7%
Daily	4	0.9%
<i>Wine</i>		
Never	113	25.1%
Once a month	24	5.3%
3-4 times a month	4	0.9%
1-2 times a week	0	0.0%
Daily	1	0.2%
<i>Liquor</i>		
Never	77	17.1%
Once a month	39	8.7%
3-4 times a month	16	3.6%
1-2 times a week	6	1.3%
Daily	4	0.9%
Total	142	
Don't drink at all	614	
Missing (beer, wine, liquor)	76	

Responses from Self-Report Survey at Parole [N=832]

	Number	Percent
Drinking Behavior		
Alone	19	14.5%
With others	112	85.5%
Total	131	100.0%
Don't drink at all	614	
Missing (beer, wine, liquor)	76	
Missing (drinking behavior)	11	
Treatment for Drug or Alcohol Use		
Yes	382	48.0%
No	417	52.0%
Total	799	100.0%
Missing	33	
Times Gone to Treatment- Month One		
0	183	52.3%
1-2	29	8.3%
3-5	42	12.0%
6-10	11	3.1%
>10	33	9.4%
unknown	52	14.9%
Total	350	100.0%
Missing	32	
Did not seek treatment	417	
Missing (seek treatment)	33	
Mean=4		
Median=0		
Mode=0		
Times Gone to Treatment - Month Two		
0	218	62.3%
1-2	13	3.7%
3-5	40	11.4%
6-10	13	3.7%
>10	27	7.7%
unknown	39	11.1%
Total	350	100.0%
Missing	32	
Did not seek treatment	417	
Missing (seek treatment)	33	
Mean = 3		
Median = 0		
Mode = 0		

Responses from Self-Report Survey at Parole [N=832]

	Number	Percent
Times Gone to Treatment - Month Three		
0	225	64.3%
1-2	17	4.9%
3-5	36	10.3%
6-10	10	2.9%
>10	23	6.6%
unknown	39	11.1%
Total	350	100.0%
Missing	32	
Did not seek treatment	417	
Missing (seek treatment)	33	
Mean = 2		
Median = 0		
Mode = 0		
Times Gone to Treatment - Month Four		
0	224	64.0%
1-2	13	3.7%
3-5	29	8.3%
6-10	6	1.7%
>10	15	4.3%
unknown	63	18.0%
Total	350	100.0%
Missing	32	
Did not seek treatment	417	
Missing (seek treatment)	33	
Mean = 2		
Median = 0		
Mode = 0		
Times Gone to Treatment - Month Five		
0	290	82.9%
1-2	11	3.1%
3-5	24	6.9%
6-10	4	1.1%
>10	13	3.7%
Unknown	8	2.3%
Total	350	100.0%
Missing	32	
Did not seek treatment	417	
Missing (seek treatment)	33	
Mean = 1		
Median = 0		
Mode = 0		

Responses from Self-Report Survey at Parole [N=832]

	Number	Percent
Times Gone to Treatment - Month Six		
0	262	74.9%
1-2	10	2.9%
3-5	23	6.6%
6-10	5	1.4%
>10	14	4.0%
Unknown	36	10.3%
Total	350	100.0%
Missing	32	
Did not seek treatment	417	
Missing (seek treatment)	33	
Mean = 1		
Median = 0		
Mode = 0		
Experience with Parole		
Contact with Parole Officer [face to face]		
Month 1		
0	138	17.9%
1	64	8.3%
2	91	11.8%
3	33	4.3%
4	132	17.1%
5 or more	30	3.9%
Unknown	284	36.8%
Total	772	100.0%
Missing	60	
Mean = 2		
Median = 2		
Mode = 0		
Month 2		
0	202	26.2%
1	59	7.6%
2	92	11.9%
3	29	3.8%
4	126	16.3%
5 or more	25	3.2%
Unknown	239	31.0%
Total	772	100.0%
Missing	60	
Mean = 2		
Median = 2		
Mode = 0		

Responses from Self-Report Survey at Parole [N=832]

	Number	Percent
Month 3		
0	212	27.5%
1	64	8.3%
2	103	13.3%
3	20	2.6%
4	110	14.2%
5 or more	24	3.1%
Unknown	239	31.0%
Total	772	100.0%
Missing	60	
Mean = 2		
Median = 1		
Mode = 0		
<hr style="border-top: 1px dashed black;"/>		
Month 4		
0	224	29.0%
1	62	8.0%
2	117	15.2%
3	21	2.7%
4	100	13.0%
5 or more	17	2.2%
Unknown	231	29.9%
Total	772	100.0%
Missing	60	
Mean = 2		
Median = 1		
Mode = 0		
<hr style="border-top: 1px dashed black;"/>		
Month 5		
0	256	33.2%
1	75	9.7%
2	108	14.0%
3	23	3.0%
4	86	11.1%
5 or more	11	1.4%
Unknown	213	27.6%
Total	772	100.0%
Missing	60	
Mean = 1		
Median = 1		
Mode = 0		
<hr style="border-top: 1px dashed black;"/>		
Month 6		
0	218	28.2%
1	88	11.4%
2	112	14.5%
3	16	2.1%
4	75	9.7%
5 or more	8	1.0%
Unknown	255	33.0%
Total	772	100.0%
Missing	60	
Mean = 1		
Median = 1		
Mode = 0		

Responses from Self-Report Survey at Parole [N=832]

	Number	Percent
Contact with Parole Officer [by phone]		
Month 1		
0	79	38.7%
1	37	18.1%
2	28	13.7%
3	11	5.4%
4	8	3.9%
5 or more	6	2.9%
Unknown	35	17.2%
Total	204	100.0%
Missing	628	
Mean = 1		
Median = 1		
Mode = 0		
<hr style="border-top: 1px dashed black;"/>		
Month 2		
0	85	41.7%
1	49	24.0%
2	15	7.4%
3	9	4.4%
4	8	3.9%
5 or more	6	2.9%
Unknown	32	15.7%
Total	204	100.0%
Missing	628	
Mean = 1		
Median = 1		
Mode = 0		
<hr style="border-top: 1px dashed black;"/>		
Month 3		
0	87	42.6%
1	46	22.5%
2	19	9.3%
3	8	3.9%
4	8	3.9%
5 or more	5	2.5%
Unknown	31	15.2%
Total	204	100.0%
Missing	628	
Mean = 1		
Median = 0		
Mode = 0		

Responses from Self-Report Survey at Parole [N=832]

	Number	Percent
Month 4		
0	93	45.6%
1	46	22.5%
2	21	10.3%
3	4	2.0%
4	10	4.9%
5 or more	2	1.0%
Unknown	28	13.7%
Total	204	100.0%
Missing	628	
Mean = 1		
Median = 0		
Mode = 0		
<hr style="border-top: 1px dashed black;"/>		
Month 5		
0	88	43.1%
1	43	21.1%
2	21	10.3%
3	8	3.9%
4	9	4.4%
5 or more	2	1.0%
Unknown	33	16.2%
Total	204	100.0%
Missing	628	
Mean = 1		
Median = 0		
Mode = 0		
<hr style="border-top: 1px dashed black;"/>		
Month 6		
0	98	48.0%
1	40	19.6%
2	19	9.3%
3	4	2.0%
4	6	2.9%
5 or more	2	1.0%
Unknown	35	17.2%
Total	204	100.0%
Missing	628	
Mean = 1		
Median = 0		
Mode = 0		

Appendix D

Responses from the Boot Camp Evaluation Survey for Admission, Graduation, and Parole Stages

Expectations of the Program

N =832

	Strongly Disagree	Disagree	Undecided	Agree	Strongly Agree
Easy Time Scale					
5. I will be safer in Boot Camp than in prison.					
Admission	5%	8%	14%	35%	38%
Graduation	6%	11%	17%	37%	29%***
Parole	7%	10%	22%	36%	25%***
14. Boot Camp is an easy way to do time.					
Admission	44%	38%	10%	6%	2%
Graduation	30%	42%	9%	14%	5%***
Parole	35%	40%	10%	11%	3%***
15. Boot Camp is a game I will play to get out of prison quicker.					
Admission	46%	40%	6%	6%	3%
Graduation	32%	47%	8%	10%	3%***
Parole	38%	44%	8%	7%	2%**
16. A shorter time in Boot Camp is easier than a longer sentence in prison.					
Admission	12%	15%	18%	30%	26%
Graduation	8%	15%	12%	35%	30%***
Parole	13%	18%	17%	34%	18%***
19. The only good thing about Boot Camp is that it shortens my prison sentence. [added]					
Admission	37%	48%	8%	6%	2%
Graduation	23%	56%	9%	8%	4%***
Parole	29%	53%	10%	5%	3%**
23. The work in Boot Camp will not be hard.					
Admission	34%	38%	19%	7%	2%
Graduation	19%	44%	9%	23%	5%***
Parole	25%	47%	8%	16%	4%***
Beneficial Expectations Scale					
1. There is nothing in Boot Camp that will help me. ®					
Admission	66%	25%	6%	2%	2%
Graduation	45%	45%	5%	3%	1%***
Parole	54%	38%	4%	3%	2%***
2. Boot Camp will not help me get a job. ®					
Admission	38%	32%	21%	7%	2%
Graduation	26%	40%	19%	11%	5%***
Parole	21%	30%	19%	20%	10%***
3. I am tough enough to handle this place.					
Admission	3%	3%	12%	35%	48%
Graduation	3%	7%	5%	39%	46%
Parole	5%	8%	8%	40%	39%***

Note: The question number references its placement in the survey. The symbol ® denotes item reversal.

* significant change at .05 level ** significant change at .01 level. *** significant change at .001 level:

Change measured from Admission (i.e. Admission vs. Graduation and Admission vs. Parole)

[continued]. **Expectations of the Program**

N =832

	Strongly Disagree	Disagree	Undecided	Agree	Strongly Agree
Beneficial Expectations Scale [cont.]					
4. This experience will not change me. ®					
Admission	57%	29%	11%	2%	2%
Graduation	39%	44%	11%	4%	3%***
Parole	45%	41%	7%	4%	2%***
6. Boot Camp will help me learn self-discipline.					
Admission	4%	1%	3%	24%	69%
Graduation	4%	5%	6%	43%	43%***
Parole	4%	3%	5%	45%	42%***
7. The Drill Instructors put on a big show, but that is all it is. ®					
Admission	26%	31%	26%	10%	7%
Graduation	12%	38%	21%	19%	10%***
Parole	23%	38%	20%	13%	6%
8. Boot Camp would never help me in any way. ®					
Admission	62%	32%	5%	1%	1%
Graduation	41%	49%	7%	2%	2%***
Parole	44%	48%	4%	1%	2%***
9. I will learn things about myself here.					
Admission	2%	2%	6%	44%	46%
Graduation	2%	5%	4%	50%	38%***
Parole	1%	3%	7%	55%	34%***
17. A good Drill Instructor deserves a lot of respect.					
Admission	1%	1%	3%	35%	61%
Graduation	1%	1%	4%	35%	58%**
Parole	2%	2%	5%	43%	49%***
18. The drug and alcohol counseling here is a waste of time.[added] ®					
Admission	41%	31%	26%	1%	0%
Graduation	26%	44%	14%	11%	6%***
Parole	25%	49%	13%	9%	4%***
20. What I learn in Boot Camp does not apply to life outside. [added] ®					
Admission	44%	43%	9%	3%	2%
Graduation	32%	50%	11%	4%	3%***
Parole	33%	53%	7%	5%	3%***
Personal Change Scale					
10. I will become a better person here.					
Admission	2%	1%	9%	37%	52%
Graduation	3%	6%	13%	47%	31%***
Parole	2%	4%	12%	50%	32%***

Note: The question number references its placement in the survey. The symbol ® denotes item reversal.

* significant change at .05 level ** significant change at .01 level. *** significant change at .001 level:

Change measured from Admission (i.e. Admission vs. Graduation and Admission vs. Parole)

[continued]. **Expectations of the Program**

N = 832

	Strongly Disagree	Disagree	Undecided	Agree	Strongly Agree
Personal Change Scale [cont.]					
11. The programs in this place will never help me in any way. ®					
Admission	56%	33%	8%	1%	2%
Graduation	35%	48%	11%	5%	2%***
Parole	40%	47%	8%	4%	2%***
12. I am becoming more mature here.					
Admission	2%	6%	16%	45%	32%
Graduation	3%	10%	12%	47%	28%**
Parole	3%	7%	12%	49%	29%
13. Because of my experience here, I will probably not get in trouble again.					
Admission	2%	4%	18%	33%	42%
Graduation	1%	8%	21%	38%	32%***
Parole	4%	7%	19%	42%	28%***
21. I am proud that I was accepted into the Boot Camp. [added]					
Admission	2%	2%	5%	34%	57%
Graduation	2%	3%	5%	29%	62%
Parole	2%	3%	6%	32%	57%

Note: The question number references its placement in the survey. The symbol ® denotes item reversal.
 * significant change at .05 level ** significant change at .01 level. *** significant change at .001 level:
 Change measured from Admission (i.e. Admission vs. Graduation and Admission vs. Parole)

Self-Control Scales

N=832

	Strongly Disagree	Disagree	Undecided	Agree	Strongly Agree
Impulsivity					
24. I often act on the spur of the moment without stopping to think.					
Admission	11%	39%	10%	33%	7%
Graduation	14%	52%	10%	21%	3%***
Parole	21%	51%	12%	14%	2%***
34. I don't devote much thought and effort to preparing for the future.					
Admission	28%	45%	9%	16%	3%
Graduation	36%	55%	5%	4%	1%***
Parole	32%	51%	9%	7%	1%***
44. I often do whatever brings me pleasure here and now, even at the cost of some distant goal.					
Admission	11%	32%	26%	29%	3%
Graduation	12%	46%	22%	18%	2%***
Parole	14%	46%	24%	14%	2%***
54. I'm more concerned with what happens to me in the long run than in the short run. ®					
Admission	4%	19%	18%	42%	18%
Graduation	3%	15%	15%	49%	18%**
Parole	3%	14%	22%	48%	14%
Simple Tasks					
26. I frequently try to avoid projects that I know will be difficult.					
Admission	14%	56%	10%	17%	3%
Graduation	15%	63%	11%	9%	2%***
Parole	19%	61%	11%	8%	2%***
36. When things get complicated, I tend to quit or withdraw.					
Admission	32%	49%	7%	10%	2%
Graduation	30%	59%	7%	4%	0%***
Parole	30%	57%	8%	4%	1%**
45. The things in life that are easier to do bring me the least pleasure. ®					
Admission	5%	30%	31%	28%	7%
Graduation	4%	33%	32%	27%	5%
Parole	7%	32%	37%	22%	4%***
56. I dislike really hard tasks that stretch my abilities to the limit.					
Admission	16%	54%	16%	12%	2%
Graduation	18%	61%	12%	9%	1%***
Parole	19%	56%	16%	8%	1%***

Note: The question number references its placement in the survey. The symbol ® denotes item reversal.
 * significant change at .05 level ** significant change at .01 level. *** significant change at .001 level:
 Change measured from Admission (i.e. Admission vs. Graduation and Admission vs. Parole)

[continued]. **Self-Control Scales**

N = 832

	Strongly Disagree	Disagree	Undecided	Agree	Strongly Agree
Physical Activities					
29. If I had a choice, I would almost always rather do something mental than something physical. ®					
Admission	7%	29%	26%	27%	11%
Graduation	10%	38%	27%	19%	6%***
Parole	10%	36%	33%	17%	4%***
38. I almost always feel better when I am on the move than when I am sitting and thinking.					
Admission	4%	19%	19%	42%	16%
Graduation	3%	18%	20%	45%	14%
Parole	5%	22%	25%	39%	10%***
48. I like to get out and do things more than I like to read or contemplate ideas.					
Admission	4%	20%	18%	43%	16%
Graduation	4%	20%	22%	41%	14%
Parole	5%	23%	29%	35%	9%***
58. I seem to have more energy and a greater need for activity than most other people my age.					
Admission	3%	23%	26%	35%	12%
Graduation	2%	14%	25%	44%	17%***
Parole	2%	13%	28%	43%	13%***
Self-Centered					
30. I try to look out for myself first, even if it means making things difficult for other people.					
Admission	22%	52%	10%	13%	3%
Graduation	18%	55%	14%	11%	3%
Parole	19%	52%	15%	12%	2%
40. I'm very sympathetic to other people when they are having problems. ®					
Admission	1%	6%	13%	56%	23%
Graduation	1%	7%	17%	58%	18%**
Parole	2%	8%	19%	54%	18%***
49. If things I do upset people, it's their problem not mine.					
Admission	22%	53%	14%	9%	2%
Graduation	17%	58%	13%	9%	3%*
Parole	20%	54%	16%	9%	1%
59. I will try to get the things I want even when I know it's causing problems for other people.					
Admission	19%	50%	14%	16%	2%
Graduation	17%	61%	14%	6%	2%***
Parole	22%	58%	14%	5%	1%***

Note: The question number references its placement in the survey. The symbol ® denotes item reversal.

* significant change at .05 level ** significant change at .01 level. *** significant change at .001 level:

Change measured from Admission (i.e. Admission vs. Graduation and Admission vs. Parole)

[continued]. **Self-Control Scales**

N = 832

	Strongly Disagree	Disagree	Undecided	Agree	Strongly Agree
Risk Seeking					
27. I like to test myself every now and then by doing something a little risky.					
Admission	10%	32%	12%	38%	8%
Graduation	9%	36%	16%	33%	7%*
Parole	17%	41%	17%	21%	4%***
37. Sometimes I will take a risk just for the fun of it.					
Admission	18%	33%	13%	31%	5%
Graduation	17%	42%	12%	27%	3%***
Parole	24%	46%	14%	14%	2%***
47. I sometimes find it exciting to do things for which I might get in trouble.					
Admission	25%	43%	11%	19%	2%
Graduation	22%	49%	13%	15%	2%
Parole	31%	50%	13%	6%	1%***
57. Excitement and adventure are less important to me than security. ®					
Admission	10%	36%	21%	24%	8%
Graduation	7%	31%	26%	29%	8%**
Parole	8%	31%	25%	28%	8%**
Temper					
32. I lose my temper pretty easily.					
Admission	29%	43%	9%	15%	4%
Graduation	23%	50%	9%	14%	4%
Parole	24%	52%	12%	10%	2%*
41. Often, when I'm angry at people I feel more like hurting them than talking to them about why I am angry.					
Admission	30%	42%	12%	14%	3%
Graduation	23%	46%	17%	11%	4%*
Parole	32%	49%	11%	7%	1%***
51. When I'm really angry, other people better stay away from me.					
Admission	24%	50%	14%	10%	2%
Graduation	17%	53%	17%	11%	2%**
Parole	24%	52%	15%	7%	2%
61. When I have a serious disagreement with someone, it's usually easy for me to talk calmly about it without getting upset. ®					
Admission	4%	18%	16%	47%	15%
Graduation	3%	19%	21%	45%	12%
Parole	3%	12%	20%	51%	15%**

Note: The question number references its placement in the survey. The symbol ® denotes item reversal.

* significant change at .05 level ** significant change at .01 level. *** significant change at .001 level:
Change measured from Admission (i.e. Admission vs. Graduation and Admission vs. Parole)

Self Efficacy Scale
N=832

	Strongly Disagree	Disagree	Undecided	Agree	Strongly Agree
25. I can do just about anything I really set my mind to do.					
Admission	1%	1%	3%	41%	54%
Graduation	1%	1%	2%	40%	56%
Parole	1%	2%	4%	46%	48%**
31. There is really no way I can solve some of the problems I have. ®					
Admission	34%	43%	12%	8%	2%
Graduation	23%	55%	11%	11%	1%**
Parole	24%	51%	14%	10%	1%**
35. There is little I can do to change many of the important things in my life. ®					
Admission	38%	48%	5%	7%	3%
Graduation	36%	52%	5%	5%	2%
Parole	30%	56%	8%	5%	1%
42. What happens to me in the future mostly depends on me.					
Admission	1%	2%	2%	24%	72%
Graduation	1%	1%	3%	28%	66%**
Parole	0%	3%	6%	37%	54%***
50. I have little control over the things that happen to me. ®					
Admission	37%	45%	8%	9%	2%
Graduation	38%	47%	8%	6%	2%*
Parole	32%	48%	11%	7%	2%
60. I often feel helpless in dealing with the problems of life.®					
Admission	14%	44%	15%	25%	4%
Graduation	17%	54%	15%	12%	2%***
Parole	19%	50%	18%	11%	2%***
63. Sometimes I feel that I am being pushed around in life. ®					
Admission	17%	42%	16%	22%	4%
Graduation	19%	44%	14%	20%	3%*
Parole	19%	46%	18%	15%	2%***

Note: The question number references its placement in the survey. The symbol ® denotes item reversal.
* significant change at .05 level ** significant change at .01 level. *** significant change at .001 level:
Change measured from Admission (i.e. Admission vs. Graduation and Admission vs. Parole)

Decision-Making Scale
N=832

	Strongly Disagree	Disagree	Undecided	Agree	Strongly Agree
28. I make decisions without thinking about consequences. ®					
Admission	14%	37%	10%	33%	7%
Graduation	21%	50%	10%	16%	3%***
Parole	27%	51%	9%	11%	2%***
33. I consider how my actions will affect others.					
Admission	3%	11%	18%	54%	14%
Graduation	2%	7%	11%	62%	19%***
Parole	2%	8%	11%	62%	18%***
39. I think about what causes my current problems.					
Admission	1%	5%	7%	60%	28%
Graduation	1%	3%	7%	68%	21%
Parole	2%	6%	10%	65%	17%***
43. I plan ahead.					
Admission	2%	11%	15%	52%	20%
Graduation	1%	3%	8%	58%	30%***
Parole	1%	4%	12%	58%	25%***
46. I make good decisions.					
Admission	4%	22%	31%	38%	6%
Graduation	1%	6%	20%	57%	16%***
Parole	1%	6%	20%	56%	17%***
52. I have trouble making decisions. ®					
Admission	21%	46%	11%	18%	4%
Graduation	27%	55%	11%	6%	1%***
Parole	28%	52%	12%	7%	2%***
53. I think about probable results of my actions.					
Admission	2%	10%	21%	59%	9%
Graduation	1%	5%	12%	70%	14%***
Parole	1%	6%	12%	66%	15%***
55. I analyze problems by looking at all the choices.					
Admission	2%	14%	17%	53%	14%
Graduation	1%	5%	10%	67%	18%***
Parole	1%	6%	12%	65%	17%***
62. I think of several different ways to solve a problem.					
Admission	1%	9%	11%	62%	18%
Graduation	1%	4%	9%	66%	21%***
Parole	1%	5%	10%	64%	21%**

Note: The question number references its placement in the survey. The symbol ® denotes item reversal.
* significant change at .05 level ** significant change at .01 level. *** significant change at .001 level:
Change measured from Admission (i.e. Admission vs. Graduation and Admission vs. Parole)

Motivation for Treatment Scales

N=832

	Strongly Disagree	Disagree	Undecided	Agree	Strongly Agree
Problem Recognition Scale					
65. My drug use is a problem for me.					
Admission	35%	24%	6%	24%	12%
Graduation	40%	32%	7%	15%	6%***
Parole	57%	24%	7%	9%	4%***
67. My drug use is more trouble than it is worth.					
Admission	27%	18%	10%	25%	21%
Graduation	32%	20%	9%	22%	17%***
Parole	46%	16%	10%	13%	15%***
68. My drug use is causing problems with the law.					
Admission	28%	17%	7%	28%	20%
Graduation	34%	23%	7%	22%	14%***
Parole	52%	20%	10%	10%	7%***
69. My drug use is causing problems in thinking or doing my work.					
Admission	31%	26%	9%	22%	12%
Graduation	36%	30%	9%	17%	9%***
Parole	55%	24%	8%	7%	6%***
74. My drug use is causing problems with my health.					
Admission	29%	28%	14%	20%	10%
Graduation	36%	30%	10%	17%	7%***
Parole	50%	25%	12%	8%	6%***
75. My drug use is making my life become worse and worse.					
Admission	29%	24%	12%	20%	15%
Graduation	36%	26%	9%	19%	9%***
Parole	48%	22%	11%	9%	9%***
77. My drug use is going to cause my death if I do not quit.					
Admission	36%	22%	11%	12%	20%
Graduation	36%	19%	11%	15%	20%
Parole	46%	16%	13%	11%	15%***

Note: The question number references its placement in the survey. The symbol ® denotes item reversal.
 * significant change at .05 level ** significant change at .01 level. *** significant change at .001 level:
 Change measured from Admission (i.e. Admission vs. Graduation and Admission vs. Parole)

[continued]. **Motivation for Treatment Scales**
N=832

	Strongly Disagree	Disagree	Undecided	Agree	Strongly Agree
Desire for Help					
64. I need help in dealing with my drug use.					
Admission	34%	23%	8%	24%	11%
Graduation	41%	32%	8%	14%	5%***
Parole	57%	24%	8%	8%	3%***
66. It is urgent that I find help for my drug use.					
Admission	35%	29%	10%	17%	11%
Graduation	40%	36%	8%	11%	5%***
Parole	57%	24%	7%	9%	3%***
70. I am tired of the problems caused by drugs.					
Admission	16%	9%	10%	31%	34%
Graduation	21%	12%	8%	30%	30%***
Parole	34%	11%	11%	18%	27%***
71. I will give up my friends and hangouts to solve my drug problems.					
Admission	13%	9%	14%	32%	32%
Graduation	13%	9%	11%	37%	31%
Parole	21%	6%	14%	29%	31%**
72. I can quit using drugs without any help. ®					
Admission	17%	17%	13%	25%	28%
Graduation	14%	19%	10%	24%	32%*
Parole	22%	13%	14%	22%	29%
73. My life has gone out of control.					
Admission	29%	24%	9%	23%	15%
Graduation	39%	30%	9%	15%	7%***
Parole	52%	26%	11%	6%	5%***
76. I want to get my life straightened out.					
Admission	2%	1%	3%	20%	75%
Graduation	4%	2%	5%	24%	66%***
Parole	10%	3%	10%	25%	53%***

Note: The question number references its placement in the survey. The symbol ® denotes item reversal.
* significant change at .05 level ** significant change at .01 level. *** significant change at .001 level:
Change measured from Admission (i.e. Admission vs. Graduation and Admission vs. Parole)

Family Warmth Scale
N=832

	Never	Rarely	Sometimes	Often	Almost Always
84. Is there a feeling of togetherness in your family?					
Admission	2%	3%	15%	20%	60%
Parole	3%	4%	18%	26%	50%***
85. Were there times each day when your family was altogether?					
Admission	3%	10%	22%	31%	35%
Parole	5%	12%	28%	28%	28%***
86. How often did your family sit down to eat together at the same time?					
Admission	5%	15%	23%	30%	28%
Parole	6%	16%	28%	30%	20%***
87. How often does your family pay attention to what you say?					
Admission	1%	4%	13%	37%	45%
Parole	1%	2%	14%	39%	44%
88. How often do family members try to cheer you up when you are sad?					
Admission	2%	6%	11%	27%	54%
Parole	2%	5%	15%	33%	45%**
89. How often does your family tell you they love and care about you?					
Admission	1%	4%	8%	23%	64%
Parole	1%	5%	13%	28%	54%***
90. When you have a problem, does someone in your family help you out?					
Admission	2%	4%	14%	21%	59%
Parole	2%	3%	15%	29%	52%
91. How often does your family really listen to your problems?					
Admission	2%	7%	13%	27%	51%
Parole	2%	4%	15%	33%	46%
92. How often does your family make you feel they love you?					
Admission	1%	3%	9%	17%	71%
Parole	1%	4%	10%	26%	59%***
93. How often does your family try to do things that are fun for everyone?					
Admission	3%	9%	21%	30%	37%
Parole	3%	7%	21%	34%	36%

Note: The question number references its placement in the survey. The symbol ® denotes item reversal.
 * significant change at .05 level ** significant change at .01 level. *** significant change at .001 level:
 Change measured from Admission (i.e. Admission vs. Graduation and Admission vs. Parole)

Friends in Trouble Scale

N=832

	<u>None</u>	<u>A Few</u>	<u>Some</u>	<u>Most</u>	<u>All</u>
94. How many of your friends do things that may get them into trouble with the law?					
Admission	6%	29%	29%	29%	8%
Parole	32%	38%	22%	7%	2%***
95. How many of your friends have ever used weapon [like a gun, knife, or club] in a fight?					
Admission	26%	28%	24%	16%	6%
Parole	42%	33%	19%	6%	1%***
96. How many of your friends have been in trouble with the police because of alcohol or drugs?					
Admission	10%	35%	25%	24%	6%
Parole	26%	39%	24%	8%	3%***
97. How many of your friends have quit school?					
Admission	15%	37%	30%	18%	1%
Parole	23%	41%	24%	11%	2%***
98. How many of your friends have damaged other people's property on purpose?					
Admission	36%	35%	19%	9%	2%
Parole	50%	29%	16%	4%	1%***
99. How many of your friends have ever been stopped or picked up by the police?					
Admission	5%	33%	27%	26%	9%
Parole	19%	43%	23%	11%	4%***
100. How many of your friends do things that might get them into trouble at work?					
Admission	39%	37%	17%	6%	2%
Parole	57%	26%	14%	3%	1%***

Note: The question number references its placement in the survey. The symbol ® denotes item reversal.
 * significant change at .05 level ** significant change at .01 level. *** significant change at .001 level:
 Change measured from Admission (i.e. Admission vs. Graduation and Admission vs. Parole)

Opportunities for the Future
N=832

	Strongly Disagree	Disagree	Undecided	Agree	Strongly Agree
78. My chances for going to college are low.					
Admission	27%	30%	17%	18%	8%
Graduation	39%	32%	14%	10%	4%***
Parole	34%	29%	20%	13%	5%***
79. Someday I would like to have a college education.					
Admission	3%	3%	12%	35%	48%
Graduation	2%	4%	13%	30%	50%
Parole	2%	5%	16%	34%	42%***
80. My chances for getting a job are good.					
Admission	2%	5%	12%	31%	50%
Graduation	1%	2%	6%	30%	61%***
Parole	2%	4%	11%	35%	49%
81. My chances for holding a steady job are good.					
Admission	1%	3%	7%	34%	56%
Graduation	0%	2%	3%	32%	63%***
Parole	1%	2%	8%	35%	54%
82. I would be disappointed if I ended up in prison again.					
Admission	3%	1%	1%	6%	89%
Graduation	2%	1%	2%	8%	86%
Parole	3%	2%	5%	12%	79%***
83. I am excited about 'starting over' when I leave here.					
Admission	1%	1%	3%	9%	88%
Graduation	1%	2%	3%	15%	79%***
Parole	1%	2%	10%	34%	52%***

Note: The question number references its placement in the survey. The symbol ® denotes item reversal.
 * significant change at .05 level ** significant change at .01 level. *** significant change at .001 level:
 Change measured from Admission (i.e. Admission vs. Graduation and Admission vs. Parole)

Appendix E

Life Tables Used for Recidivism Study

Table 1e. Failure Rates for the Recidivism Sample- Rearrest and Technical Violation

Exposure Months	Entire Sample				Pre 90-day Aftercare Group				30-day Aftercare Group				90-day Aftercare Group			
	Risk Set N	Censored N	Arrested N	Proportion Arrested	Risk Set N	Censored* N	Arrested N	Proportion Arrested	Risk Set N	Censored N	Arrested N	Proportion Arrested	Risk Set N	Censored N	Arrested N	Proportion Arrested
0	1091	0	21	0.019	374	0	5	0.013	375	0	4	0.011	342	0	12	0.035
1	1070	0	23	0.021	369	0	11	0.030	371	0	7	0.019	330	0	5	0.015
2	1047	0	18	0.017	358	0	8	0.022	364	0	5	0.014	325	0	5	0.015
3	1029	0	36	0.035	350	0	12	0.034	359	0	12	0.033	320	0	12	0.038
4	993	0	35	0.035	338	0	9	0.027	347	0	16	0.046	308	0	10	0.032
5	958	0	37	0.039	329	0	11	0.033	331	0	20	0.060	298	0	6	0.020
6	921	0	33	0.036	318	0	4	0.013	311	0	13	0.042	292	0	16	0.055
7	888	0	31	0.035	314	0	7	0.022	298	0	14	0.047	276	0	10	0.036
8	857	0	25	0.029	307	0	10	0.033	284	0	4	0.014	266	0	11	0.041
9	832	0	41	0.049	297	0	17	0.057	280	0	12	0.043	255	0	12	0.047
10	791	0	21	0.027	280	0	8	0.029	268	0	7	0.026	243	0	6	0.025
11	770	0	28	0.036	272	0	8	0.029	261	0	12	0.046	237	0	8	0.034
12	742	0	12	0.016	264	0	5	0.019	249	0	5	0.020	229	0	2	0.009
13	730	0	19	0.026	259	0	6	0.023	244	0	7	0.029	227	0	6	0.026
14	711	0	23	0.032	253	0	10	0.040	237	0	7	0.030	221	0	6	0.027
15	688	0	22	0.032	243	0	14	0.058	230	0	3	0.013	215	0	5	0.023
16	666	0	17	0.026	229	0	8	0.035	227	0	6	0.026	210	0	3	0.014
17	649	0	15	0.023	221	0	7	0.032	221	0	3	0.014	207	0	5	0.024
18	634	0	15	0.024	214	0	7	0.033	218	0	8	0.037	202	0	0	0.000
19	619	0	17	0.027	207	0	4	0.019	210	0	5	0.024	202	0	8	0.040
20	602	0	11	0.018	203	0	2	0.010	205	0	4	0.020	194	0	5	0.026
21	591	0	14	0.024	201	0	5	0.025	201	0	6	0.030	189	0	3	0.016
22	577	0	12	0.021	196	0	4	0.020	195	0	4	0.021	186	0	4	0.022
23	565	0	13	0.023	192	0	2	0.010	191	0	5	0.026	182	0	6	0.033
24	552	550	2	0.007	190	190	0	0.000	186	185	1	0.011	176	175	1	0.011

* This column reflects those offenders who were removed from 'arrest risk' due to being incarcerated for technical violations.
 ** This number represents the number of offenders who were not removed from the 'at risk' group and 'survived' arrest.

Table 2e. Failure Rates for the Recidivism Sample- Re-arrest only

Exposure Months	Entire Sample				Pre 90-day Aftercare Group				30-day Aftercare Group				90-day Aftercare Group			
	Risk Set N	Censored N	Arrested N	Proportion Arrested	Risk Set N	Censored* N	Arrested N	Proportion Arrested	Risk Set N	Censored N	Arrested N	Proportion Arrested	Risk Set N	Censored N	Arrested N	Proportion Arrested
0	1091	0	9	0.008	374	0	4	0.011	375	0	3	0.008	342	0	2	0.006
1	1082	2	11	0.010	370	1	6	0.016	372	0	4	0.011	340	1	1	0.003
2	1069	0	6	0.006	363	0	3	0.008	368	0	1	0.003	338	0	2	0.006
3	1063	8	17	0.016	360	2	6	0.017	367	2	7	0.019	336	4	4	0.012
4	1038	4	23	0.022	352	2	7	0.020	358	1	12	0.034	328	1	4	0.012
5	1011	5	23	0.023	343	0	8	0.023	345	2	11	0.032	323	3	4	0.012
6	983	7	23	0.023	335	0	5	0.015	332	1	9	0.027	316	6	9	0.029
7	953	9	25	0.026	330	1	6	0.018	322	4	10	0.031	301	4	9	0.030
8	919	10	14	0.015	323	4	7	0.022	308	1	4	0.013	288	5	3	0.011
9	895	12	35	0.039	312	3	15	0.048	303	5	9	0.030	280	4	11	0.040
10	848	10	13	0.015	294	2	5	0.017	289	1	4	0.014	265	7	4	0.015
11	825	13	16	0.020	287	4	5	0.018	284	3	6	0.021	254	6	5	0.020
12	796	12	7	0.009	278	4	3	0.011	275	4	4	0.015	243	4	0	0.000
13	777	11	11	0.014	271	2	4	0.015	267	6	2	0.008	239	3	5	0.021
14	755	12	17	0.023	265	6	6	0.023	259	5	7	0.027	231	1	4	0.017
15	726	15	18	0.025	253	4	10	0.040	247	8	4	0.016	226	3	4	0.018
16	693	10	11	0.016	239	3	5	0.021	235	6	4	0.017	219	1	2	0.009
17	672	8	9	0.013	231	2	6	0.026	225	4	0	0.000	216	2	3	0.014
18	655	5	10	0.015	223	4	4	0.018	221	1	5	0.023	211	0	1	0.005
19	640	6	13	0.020	215	1	2	0.009	215	5	4	0.019	210	0	7	0.033
20	621	7	7	0.011	212	2	1	0.005	206	2	3	0.015	203	3	3	0.015
21	607	13	6	0.010	209	4	1	0.005	201	3	3	0.015	197	6	2	0.010
22	588	10	6	0.010	204	4	3	0.015	195	3	1	0.005	189	3	2	0.011
23	572	12	7	0.012	197	4	2	0.010	191	3	2	0.011	184	5	3	0.017
24	553	552**	1	0.004	191	191**	0	0.000	186	185**	1	0.011	176	176**	0	0.000

* This column reflects those offenders who were removed from 'arrest risk' due to being incarcerated for technical violations.
 ** This number represents the number of offenders who were not removed from the 'at risk' group and 'survived' arrest.

Table 3e. Failure Rates for the Recidivism Sample- Technical Violations only

Exposure Months	Entire Sample				Pre 90-day Aftercare Group				30-day Aftercare Group				90-day Aftercare Group			
	Risk Set	Censored	Technical	Proportion	Risk Set	Censored	Technical	Proportion	Risk Set	Censored	Technical	Proportion	Risk Set	Censored	Technical	Proportion
	N	N	N	Arrested	N	N	N	Arrested	N	N	N	Arrested	N	N	N	Arrested
0	1091	0	13	0.012	374	0	2	0.005	375	0	1	0.003	342	0	10	0.029
1	1078	0	15	0.014	372	0	6	0.016	374	0	4	0.011	332	0	5	0.015
2	1063	0	15	0.014	366	0	8	0.022	370	0	4	0.011	327	0	3	0.009
3	1048	0	26	0.025	358	0	11	0.031	366	0	6	0.016	324	0	9	0.028
4	1022	0	25	0.024	347	0	5	0.014	360	0	12	0.033	315	0	8	0.025
5	997	0	29	0.029	342	0	7	0.020	348	0	18	0.052	307	0	4	0.013
6	968	0	27	0.028	335	0	3	0.009	330	0	10	0.030	303	0	14	0.046
7	941	0	23	0.024	332	0	5	0.015	320	0	10	0.031	289	0	8	0.028
8	918	0	23	0.025	327	0	8	0.024	310	0	4	0.013	281	0	11	0.039
9	895	0	23	0.026	319	0	8	0.025	306	0	8	0.026	270	0	7	0.026
10	872	0	30	0.034	311	0	9	0.029	298	0	11	0.037	263	0	10	0.038
11	842	0	31	0.037	302	0	11	0.036	287	0	10	0.035	253	0	10	0.040
12	811	0	15	0.018	291	0	5	0.017	277	0	7	0.025	243	0	3	0.012
13	796	0	15	0.019	286	0	5	0.017	270	0	8	0.030	240	0	2	0.008
14	781	0	16	0.020	281	0	7	0.025	262	0	5	0.019	238	0	4	0.017
15	765	0	22	0.029	274	0	9	0.033	257	0	9	0.035	234	0	4	0.017
16	743	0	18	0.024	265	0	10	0.038	248	0	3	0.012	230	0	5	0.022
17	725	0	11	0.015	255	0	5	0.020	245	0	4	0.016	225	0	2	0.009
18	714	0	18	0.025	250	0	6	0.024	241	0	7	0.029	223	0	5	0.022
19	696	0	16	0.023	244	0	6	0.025	234	0	6	0.026	218	0	4	0.018
20	680	0	17	0.025	238	0	7	0.029	228	0	5	0.022	214	0	5	0.023
21	663	0	16	0.024	231	0	7	0.030	223	0	7	0.031	209	0	2	0.010
22	647	0	13	0.020	224	0	4	0.018	216	0	4	0.019	207	0	5	0.024
23	634	0	12	0.019	220	0	1	0.005	212	0	7	0.033	202	0	4	0.020
24	622	621	1	0.003	219	219	0	0.000	205	205	0	0.000	198	197	1	0.010

* This column reflects those offenders who were removed from 'arrest risk' due to being incarcerated for technical violations.
 ** This number represents the number of offenders who were not removed from the 'at risk' group and 'survived' arrest.

The Pennsylvania Commission on Sentencing
P.O. Box 1200
State College, PA 16804-1200
Phone: 814-863-2797
Fax: 814-863-2129
<http://pcs.la.psu.edu/>

The Pennsylvania Commission on Sentencing is an agency of the General Assembly located on the University Park campus of The Pennsylvania State University. The Commission was created in 1978 for the primary purpose of creating a consistent and rational statewide sentencing policy to promote fairer and more uniform sentencing practices.