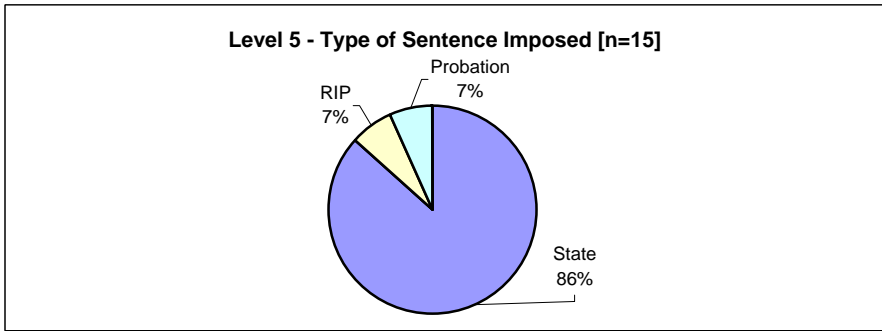
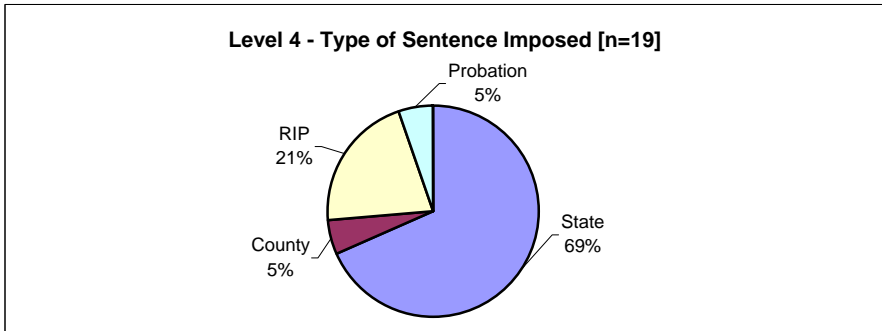


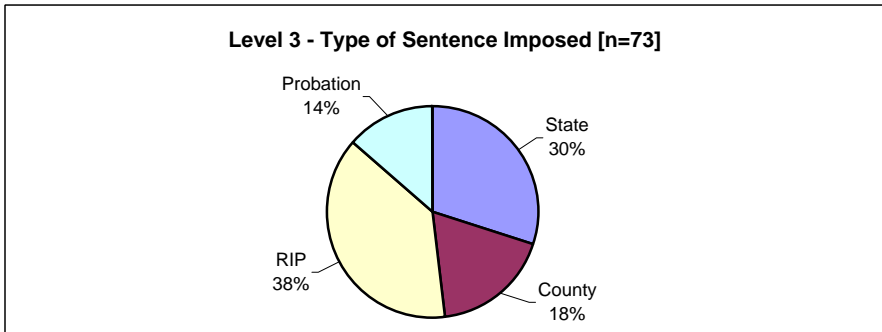
**Type of Sentence Imposed During 2004 by Sentencing Guideline Level [Adams: N=458]**



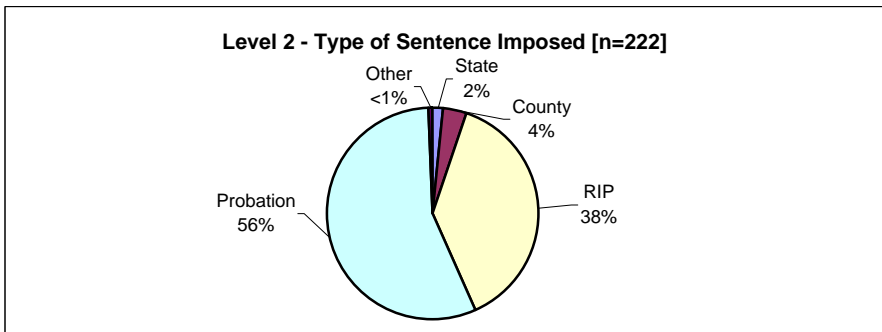
	<u>Number</u>	<u>Percent</u>
State	13	86.7%
County	0	0.0%
RIP	1	6.7%
Probation	1	6.7%
Other	0	0.0%
Total	15	100.0%



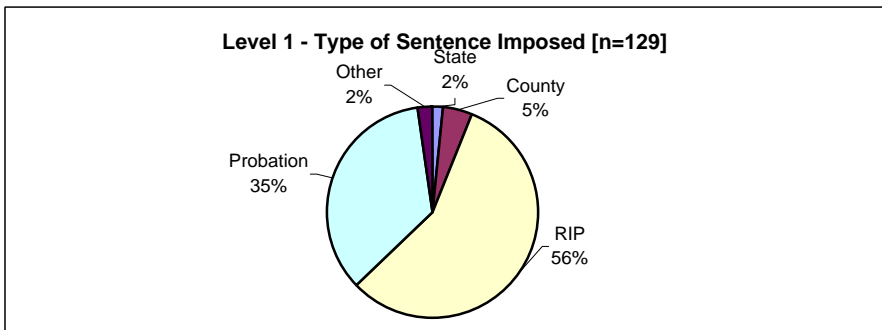
	<u>Number</u>	<u>Percent</u>
State	13	68.4%
County	1	5.3%
RIP	4	21.1%
Probation	1	5.3%
Other	0	0.0%
Total	19	100.0%



	<u>Number</u>	<u>Percent</u>
State	22	30.1%
County	13	17.8%
RIP	28	38.4%
Probation	10	13.7%
Other	0	0.0%
Total	73	100.0%



	<u>Number</u>	<u>Percent</u>
State	4	1.8%
County	8	3.6%
RIP	84	37.8%
Probation	125	56.3%
Other	1	0.5%
Total	222	100.0%



	<u>Number</u>	<u>Percent</u>
State	2	1.6%
County	6	4.7%
RIP	73	56.6%
Probation	45	34.9%
Other	3	2.3%
Total	129	100.0%

Note: These numbers reflect the offender's most serious offense for a judicial proceeding.