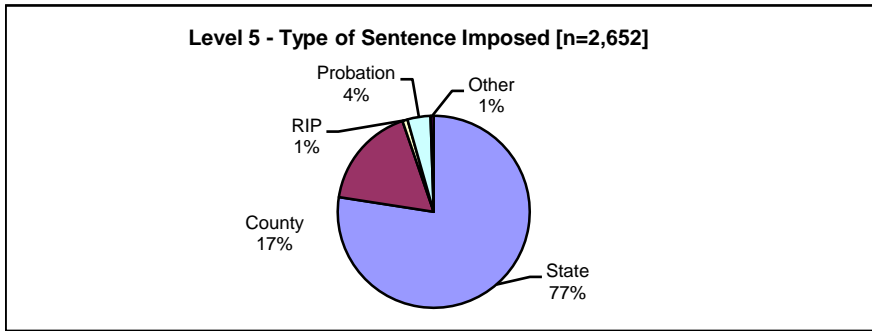
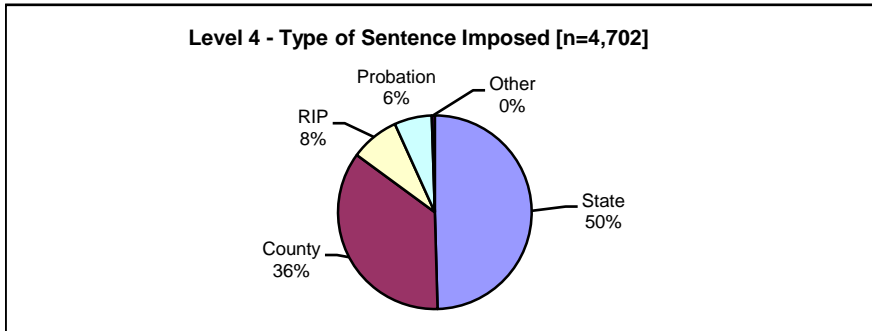


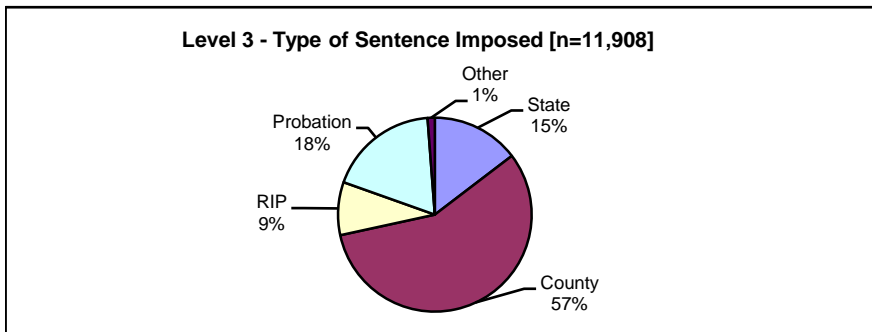
Type of Sentence Imposed During 2004 by Sentencing Guideline Level [Statewide: N=64,086]



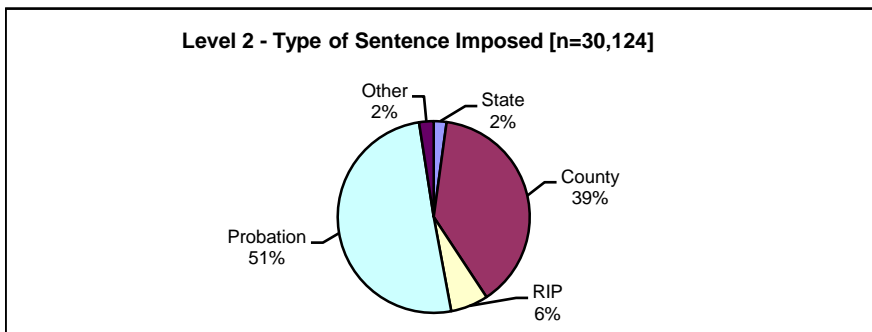
	<u>Number</u>	<u>Percent</u>
State	2054	77.5%
County	458	17.3%
RIP	23	0.9%
Probation	103	3.9%
Other	14	0.5%
Total	2652	100.0%



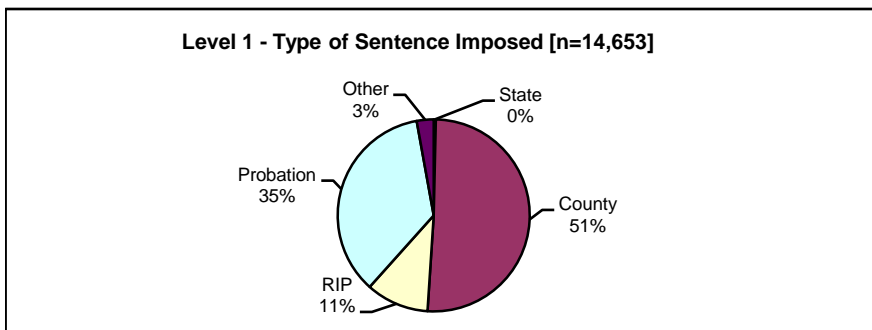
	<u>Number</u>	<u>Percent</u>
State	2330	49.6%
County	1670	35.5%
RIP	384	8.2%
Probation	294	6.3%
Other	24	0.5%
Total	4702	100.0%



	<u>Number</u>	<u>Percent</u>
State	1742	14.6%
County	6783	57.0%
RIP	1053	8.8%
Probation	2187	18.4%
Other	143	1.2%
Total	11908	100.0%
Missing	7	
	11915	



	<u>Number</u>	<u>Percent</u>
State	650	2.2%
County	11617	38.6%
RIP	1912	6.3%
Probation	15206	50.5%
Other	739	2.5%
Total	30124	100.0%
Missing	27	
	30151	



	<u>Number</u>	<u>Percent</u>
State	52	0.4%
County	7426	50.7%
RIP	1552	10.6%
Probation	5206	35.5%
Other	417	2.8%
Total	14653	100.0%
Missing	13	
	14666	

Note: These numbers reflect the offender's most serious offense for a judicial proceeding.